



9725 3rd
AVENUE
NORTHEAST,
SUITE 410

Office Sublease | 3,236 RSF

Building Information

Address: 9725 3rd Avenue Northeast, Suite 410, Seattle, WA 98115

Available: 3,236 Rentable Square Feet

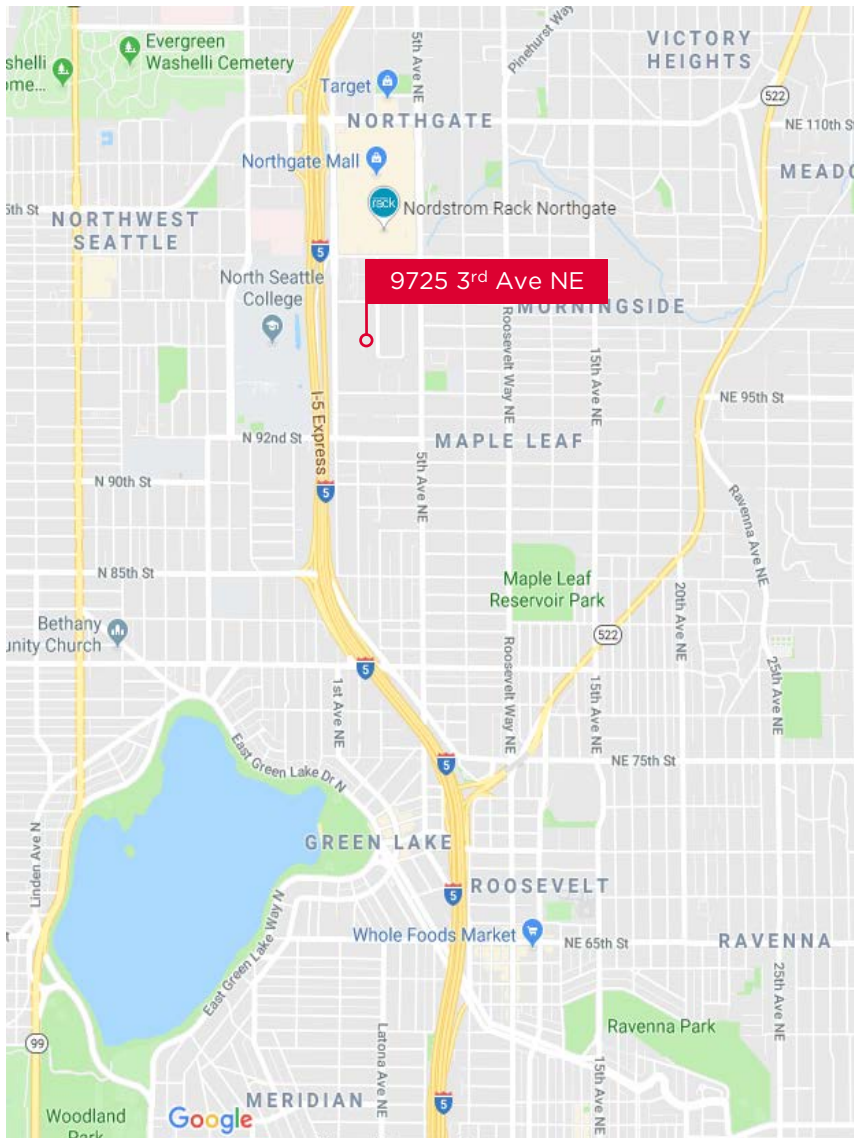
Asking Rate: Call Broker for Rate

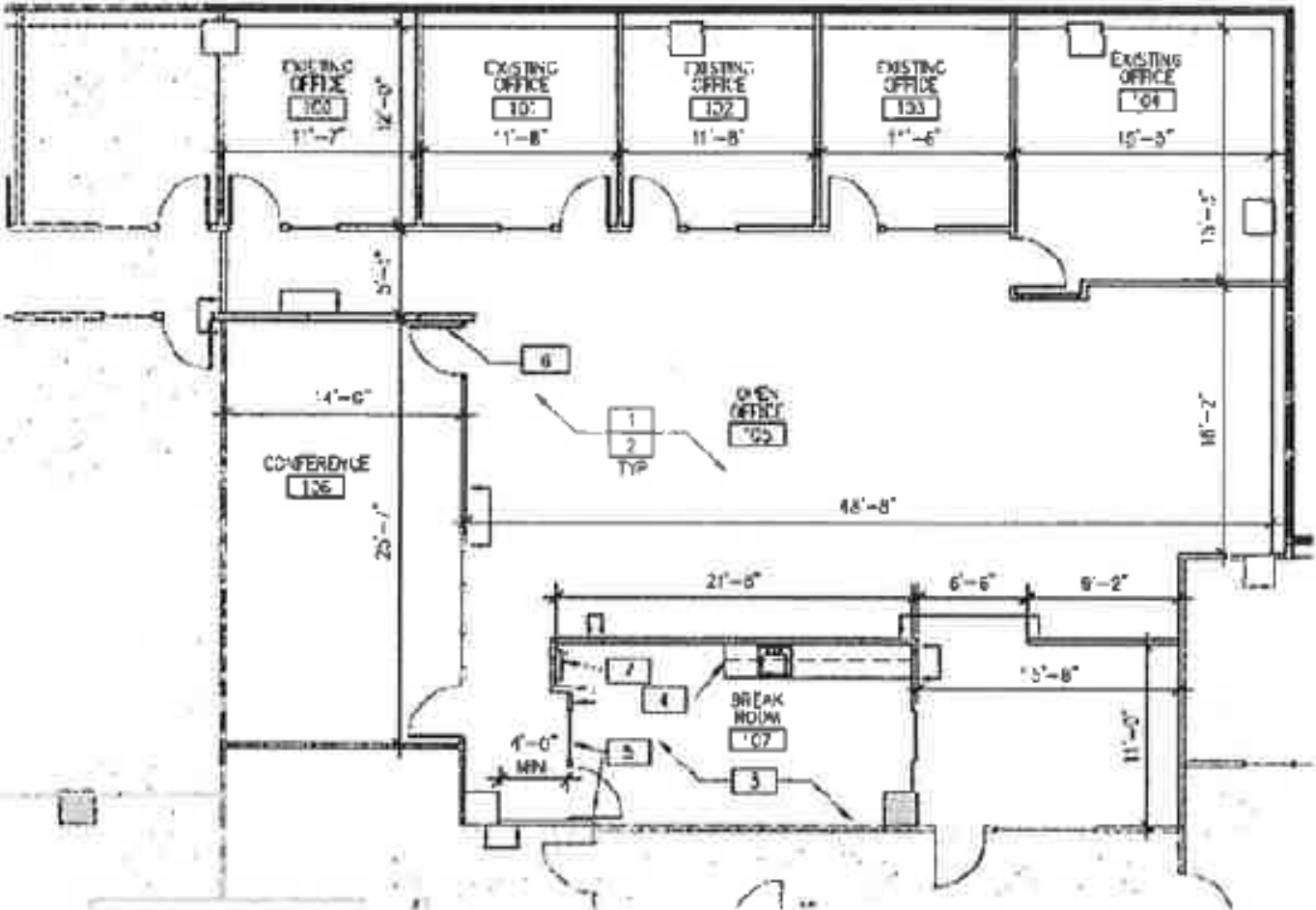
Occupancy: Available Immediately

Available Through: June 30, 2021

Highlights

- 4 Private Window Offices
- Conference Room for 12
- Kitchen & Breakroom
- Central Northgate Location: Easy access to I-5
- Free Surface Parking
- Furniture Available









For More Information Please Contact:

Derek Pedersen

derek@hughesmarino.com

(206) 624-3111

Broker License #130093

Owen Rice

owen@hughesmarino.com

(206) 624-3111

Broker License #83886