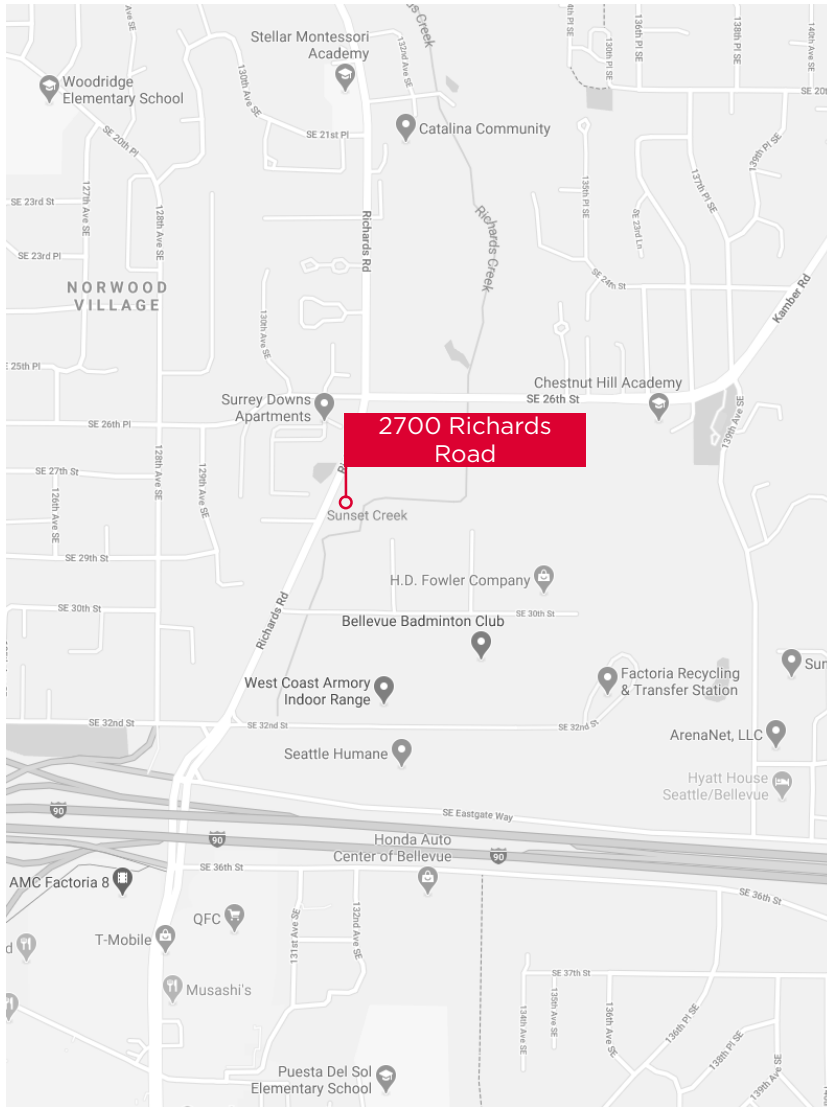


A photograph of a modern office building with large glass windows and a light-colored facade. The building is surrounded by lush green landscaping, including trees and shrubs. A flagpole with a red and white striped flag is visible on the right side of the building. The sky is clear and blue.

# 2700 RICHARDS ROAD SUITE 201

Office Sublease | 4,595 RSF



# Building Information

**Address:** 2700 Richards Road, Suite 201,  
Bellevue, WA 98005

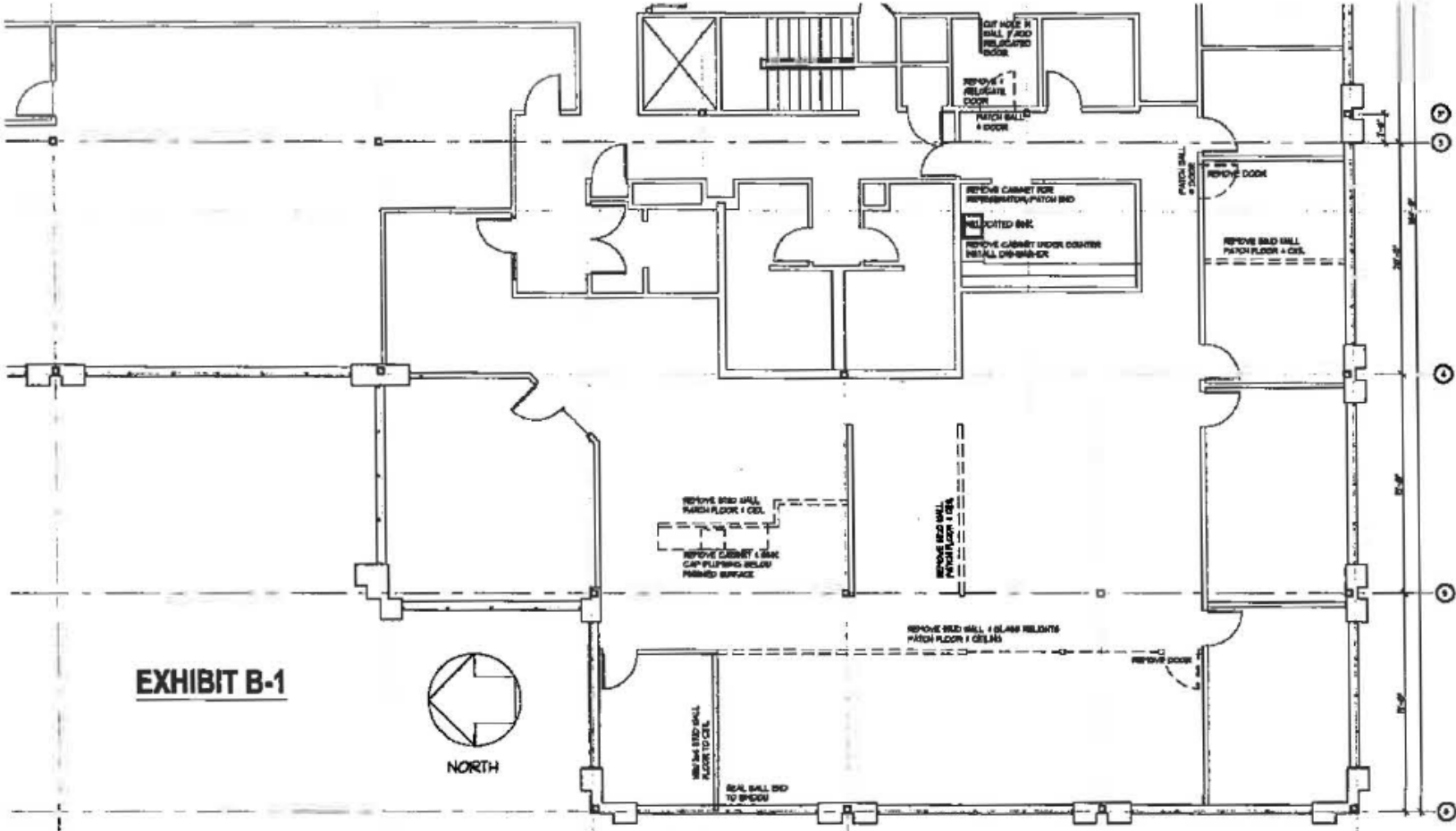
**Available:** 4,595 Rentable Square Feet

**Asking Rate:** \$25.00/FS

**Available Through:** December 31, 2022

# Highlights

- 5 Private Window Offices
- Conference Room
- Kitchen & Breakroom
- Adjacent to Factoria amenities with easy access to I-90 & I-405
- Free surface parking
- The building also features excellent lobby exposure and identity, fiber optic services, locker and shower facility on 1st floor, and views of tree lined salmon stream.



2700 Richards Road, Suite 201, Bellevue | 4,595 RSF





# For More Information Please Contact:

Derek Pedersen

Associate Vice President

[derek@hughesmarino.com](mailto:derek@hughesmarino.com)

(206) 624-3111

Broker License #130093