



# 22021 20th AVENUE SE 2nd FLOOR

Office & Laboratory Sublease | 25,000 RSF



## Building Information

**Address:** 22021 20<sup>th</sup> Avenue SE, 2<sup>nd</sup> Floor,  
Bothell, WA 98021

**Available:** 25,000 Rentable Square Feet

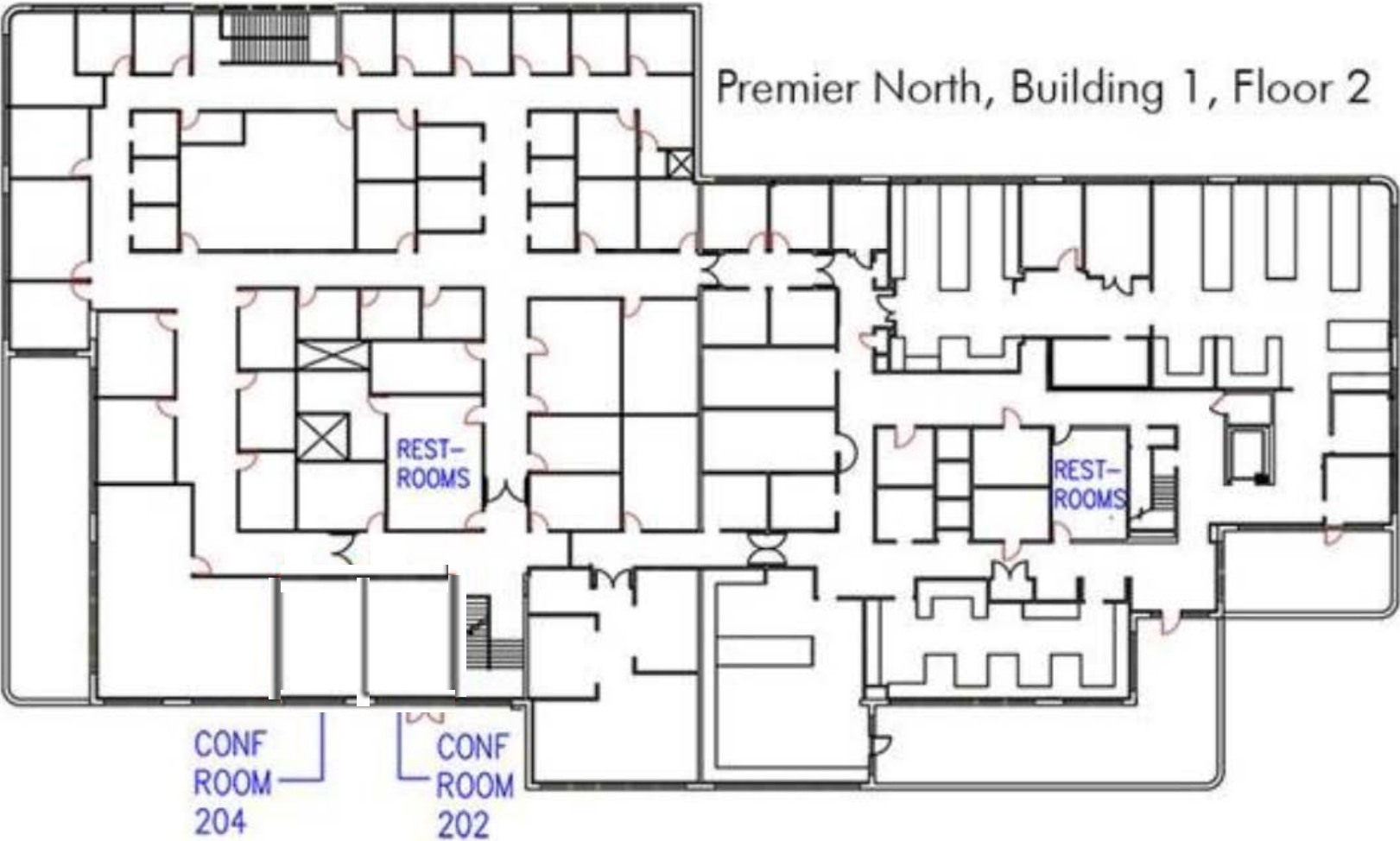
**Asking Rate:** TBD

**Occupancy:** September 15, 2018

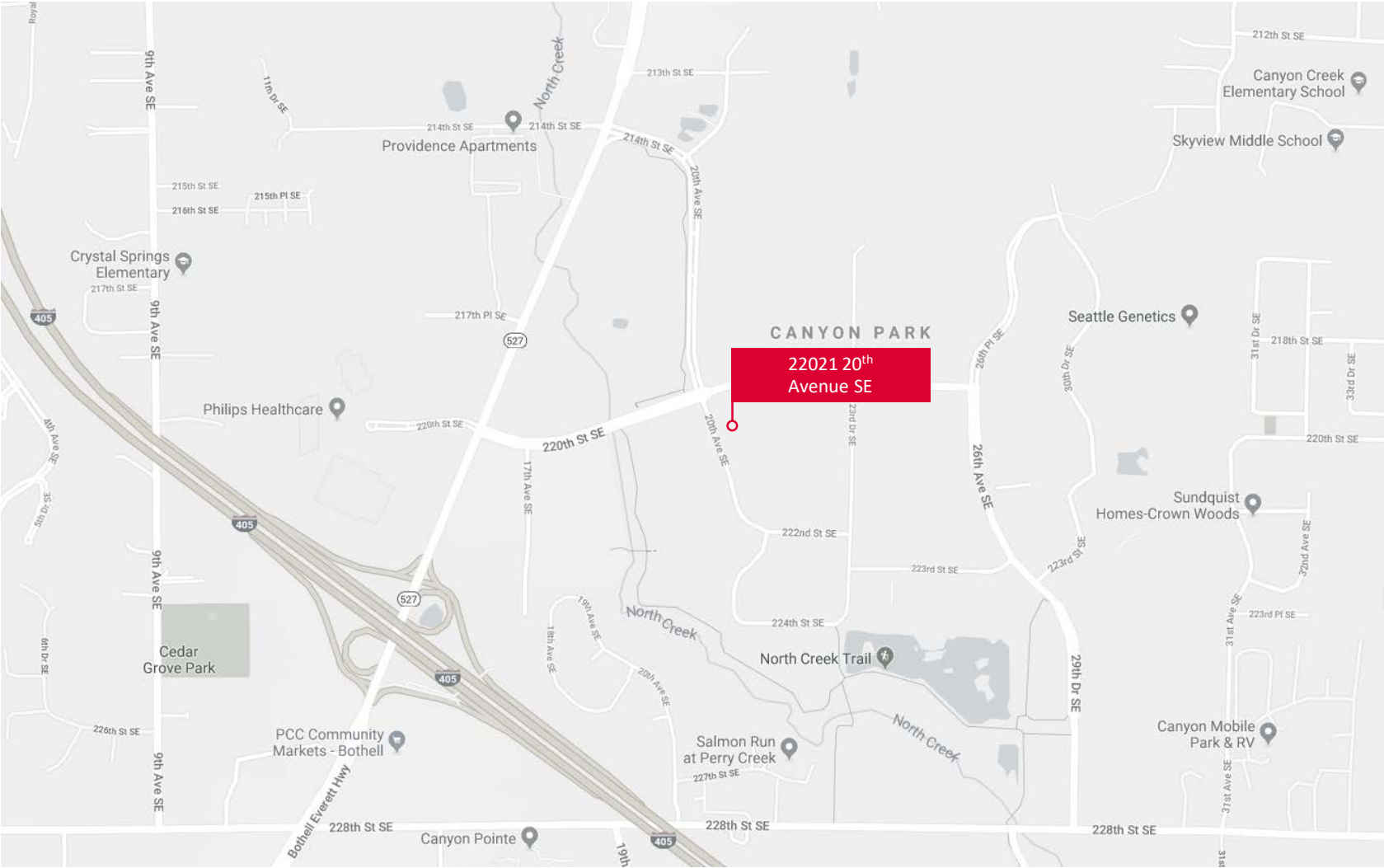
**Available Through:** February 28, 2029

## Highlights

- Office & laboratory space
- Free parking, 2.7 per 1,000 parking ratio
- Located near public transit, hotels and restaurants



22021 20<sup>th</sup> Avenue SE, 2<sup>nd</sup> Floor, Bothell | 25,000 RSF





For More Information,  
Please Contact:



**Owen Rice**

Executive Vice President

[owen@hughesmarino.com](mailto:owen@hughesmarino.com)

(206) 624-3111

Broker License #83886