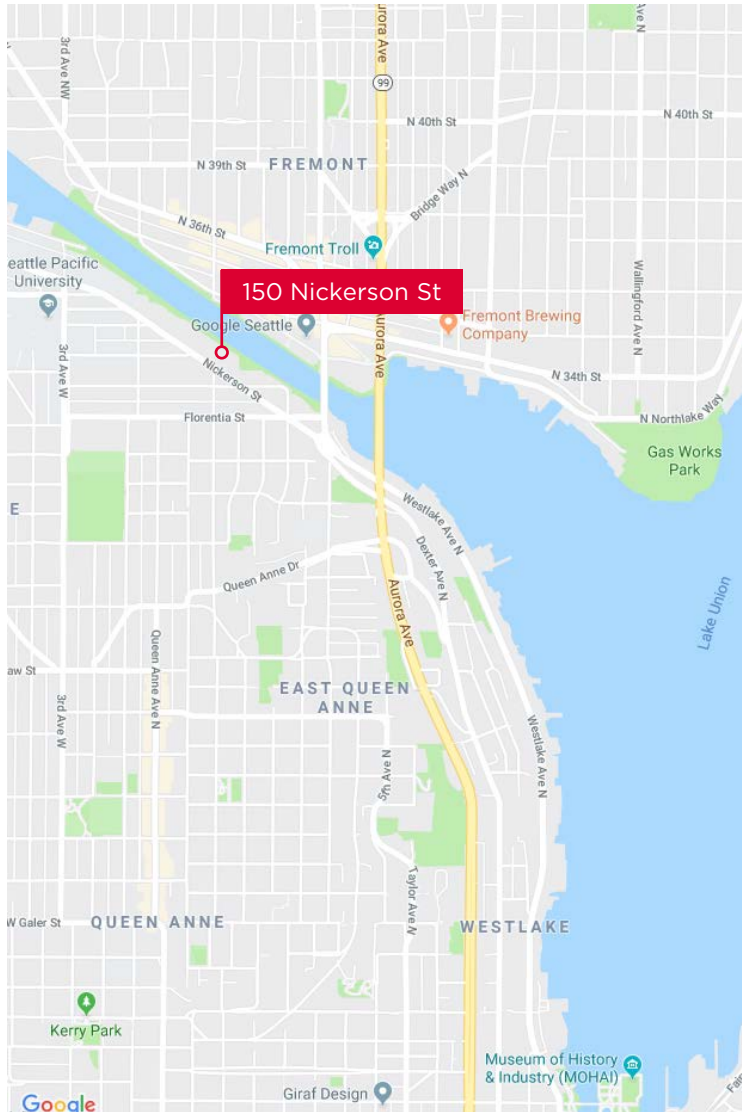




150  
NICKERSON  
STREET,  
SUITE 305

Office Sublease | 3,776 RSF



# Building Information

**Address:** 150 Nickerson Street, Suite 305, Seattle, WA 98109

**Available:** 3,776 Rentable Square Feet

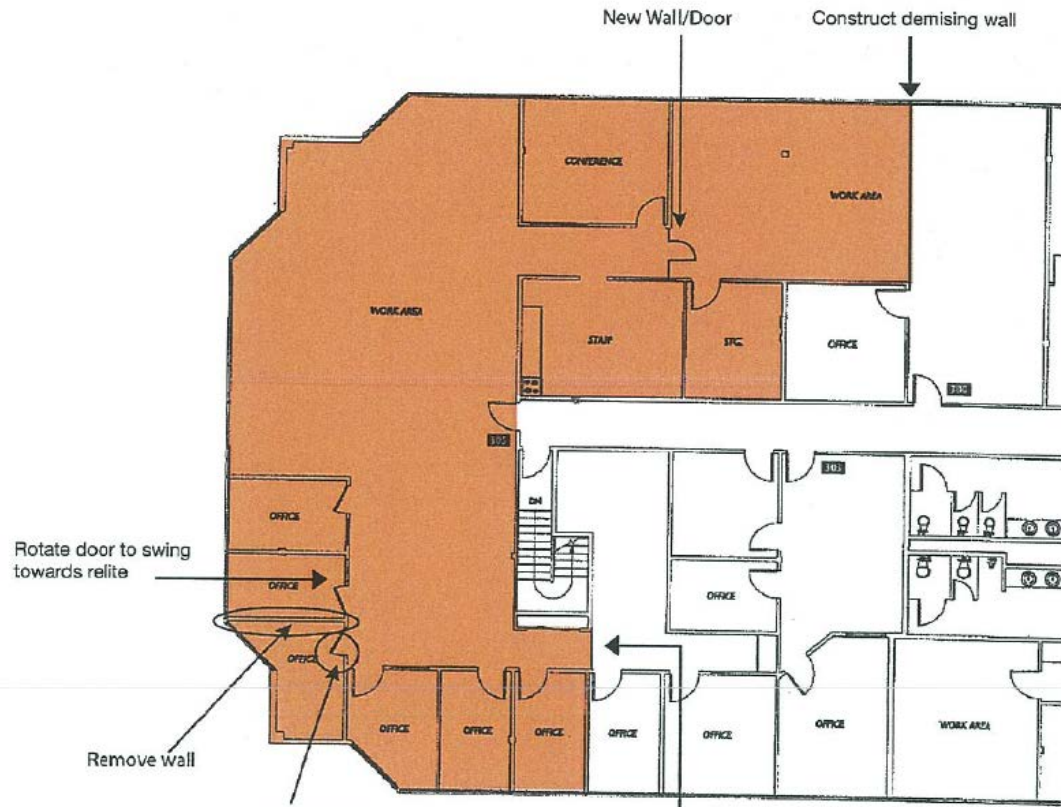
**Asking Rate:** Call Broker for Rate

**Occupancy:** Available 30 Days

**Available Through:** December 31, 2022

# Description

- 5 Private Offices & Conference Room
- Open Work Space
- Kitchen & Break room
- Easy access to Fremont, South Lake Union, Downtown, and Ballard
- Furniture Available



Rotate door to swing towards relite

Remove wall

Remove door, add wall

New Wall/Door

Construct demising wall

Power Needs:  
Server Room  
6 - 30 Amp Circuit  
1 - 60 Amp AC Circuit  
(Est. 60,000 BTU Split Unit)  
Tech room  
1 - 30 Amp Dedicatc Circuit







## For More Information Please Contact:

Derek Pedersen

Associate

derek@hughesmarino.com

(206) 624-3111

Broker License #130093

Owen Rice

Executive Vice President

owen@hughesmarino.com

(206) 624-3111

Broker License #83886