

# 42 DORE STREET

SAN FRANCISCO, CA 94103

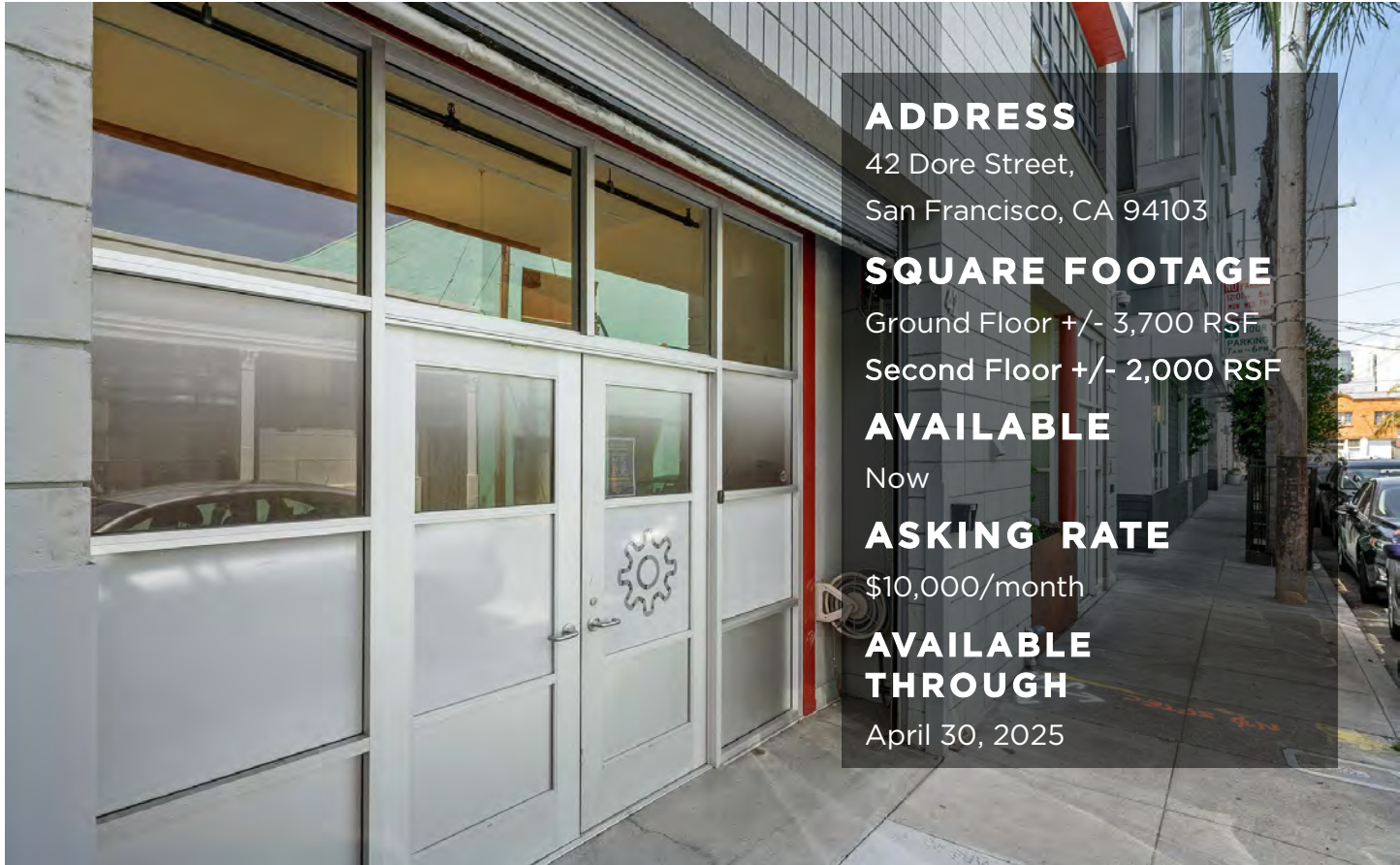


OFFICE SUBLEASE | AVAILABLE NOW

+/- 5,700 RSF

HUGHESMARINO

# SUBLEASE INFORMATION



## **ADDRESS**

42 Dore Street,  
San Francisco, CA 94103

## **SQUARE FOOTAGE**

Ground Floor +/- 3,700 RSF  
Second Floor +/- 2,000 RSF

## **AVAILABLE**

Now

## **ASKING RATE**

\$10,000/month

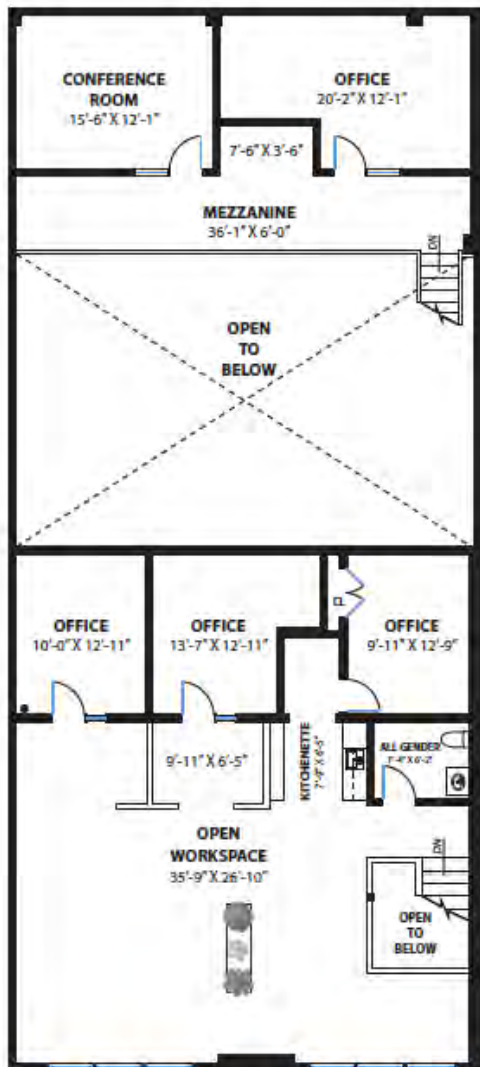
## **AVAILABLE THROUGH**

April 30, 2025

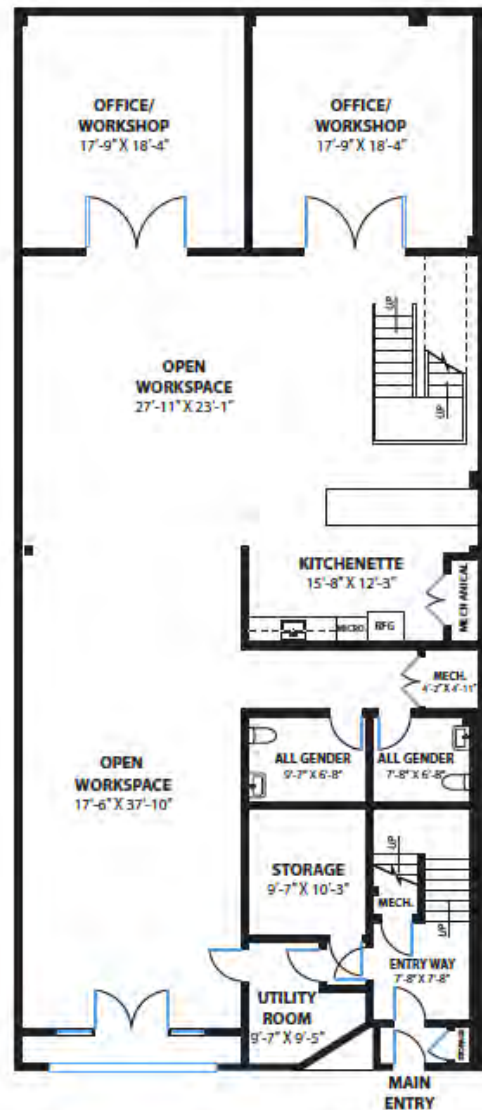
## **ADDITIONAL FEATURES**

- Modern flex building in the SOMA neighborhood
- Full ground & second floor plan with open work areas
- Full HVAC, expansive windows, and skylights
- Entry with built-in phone system
- Alarm system with surveillance

# FLOOR PLAN



*Second Floor*



*Ground Floor*

## SPACE HIGHLIGHTS

- 7 private offices
- Full kitchen, kitchenette, and break area
- 1 roll-up door
- Storage and server room

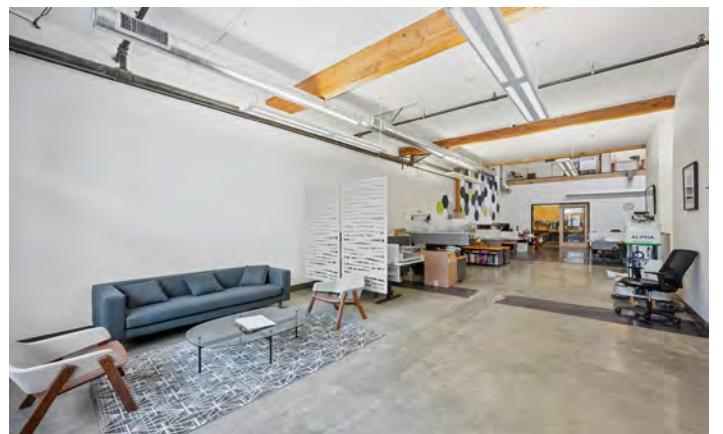
42 DOE STREET, GROUND FLOOR



42 DOE STREET, GROUND FLOOR



42 DOE STREET, GROUND FLOOR



42 DOE STREET, GROUND FLOOR



42 DOE STREET, GROUND FLOOR





42 DOE STREET, GROUND FLOOR



42 DOE STREET, GROUND FLOOR



42 DOE STREET, GROUND FLOOR



42 DOE STREET, GROUND FLOOR



42 DOE STREET, GROUND FLOOR



42 DOE STREET, GROUND FLOOR



42 DOE STREET, GROUND FLOOR



# CONTACT INFORMATION



**CAMERON LOVE**

cameron@hughesmarino.com

415.745.5157

Broker Lic. #01914963

**1 EMBARCADERO CENTER, 16<sup>TH</sup> FLOOR**  
**SAN FRANCISCO, CA 94111**  
415.431.3211 | hughesmarino.com

**HUGHESMARINO**