

One Letterman Drive Building B, 6th Floor

SAN FRANCISCO, CA 94129



BRAND-NEW OFFICE SUITES AVAILABLE FOR SUBLEASE:

**6,875 RSF (west facing suite) & 9,750 RSF
(east facing suite)**

KEVIN BRENNAN

Executive Vice President

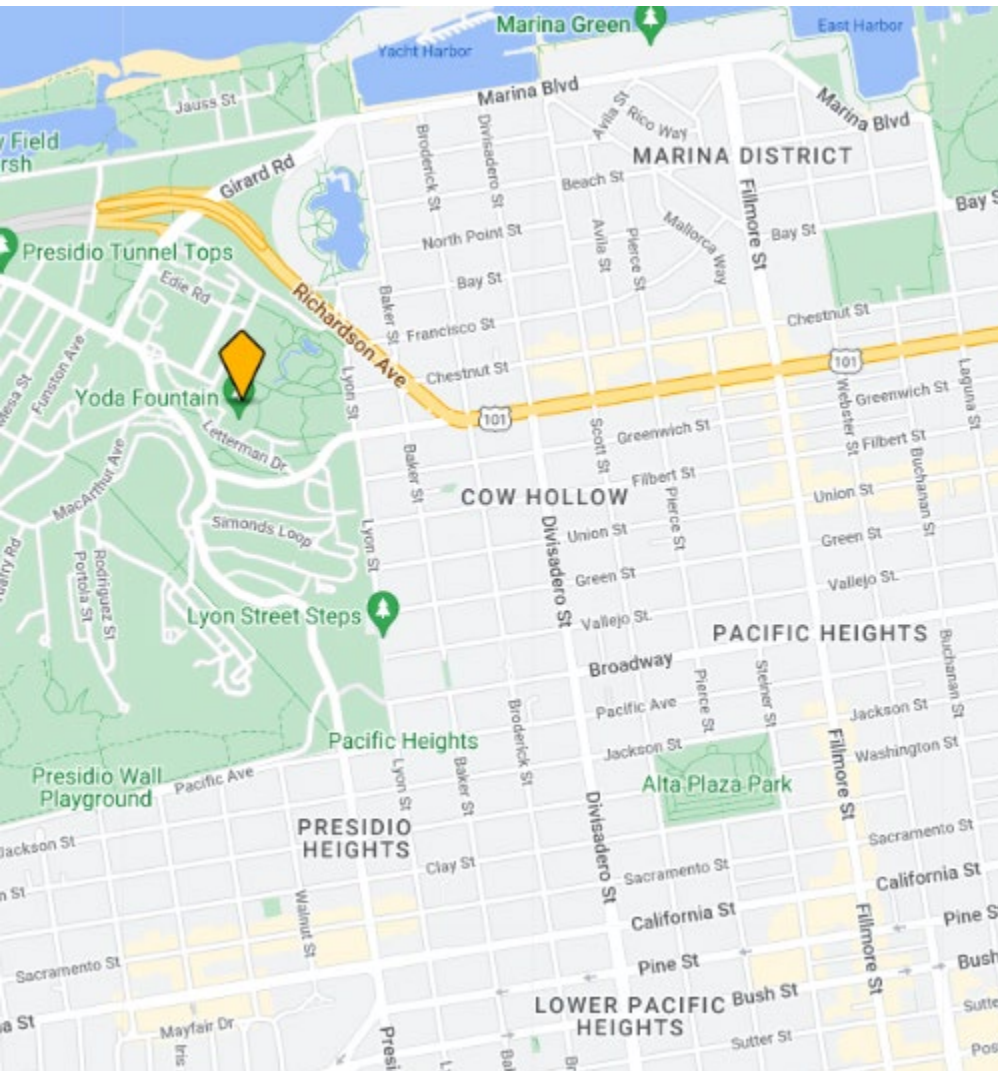
Lic. #01127168

kevin@hughesmarino.com

415.307.0678

**HUGHES
MARINO**

SUBLEASE INFORMATION



BUILDING ADDRESS

One Letterman Drive,
Building B, San Francisco,
CA 94129

AVAILABLE RSF

6th Floor:

- Suite B - 6,875 RSF
- Suite C - 9,750 RSF

Both newly constructed spec
suites

ASKING RATE

Call for Rate

TERM

5 Years

OCCUPANCY DATE

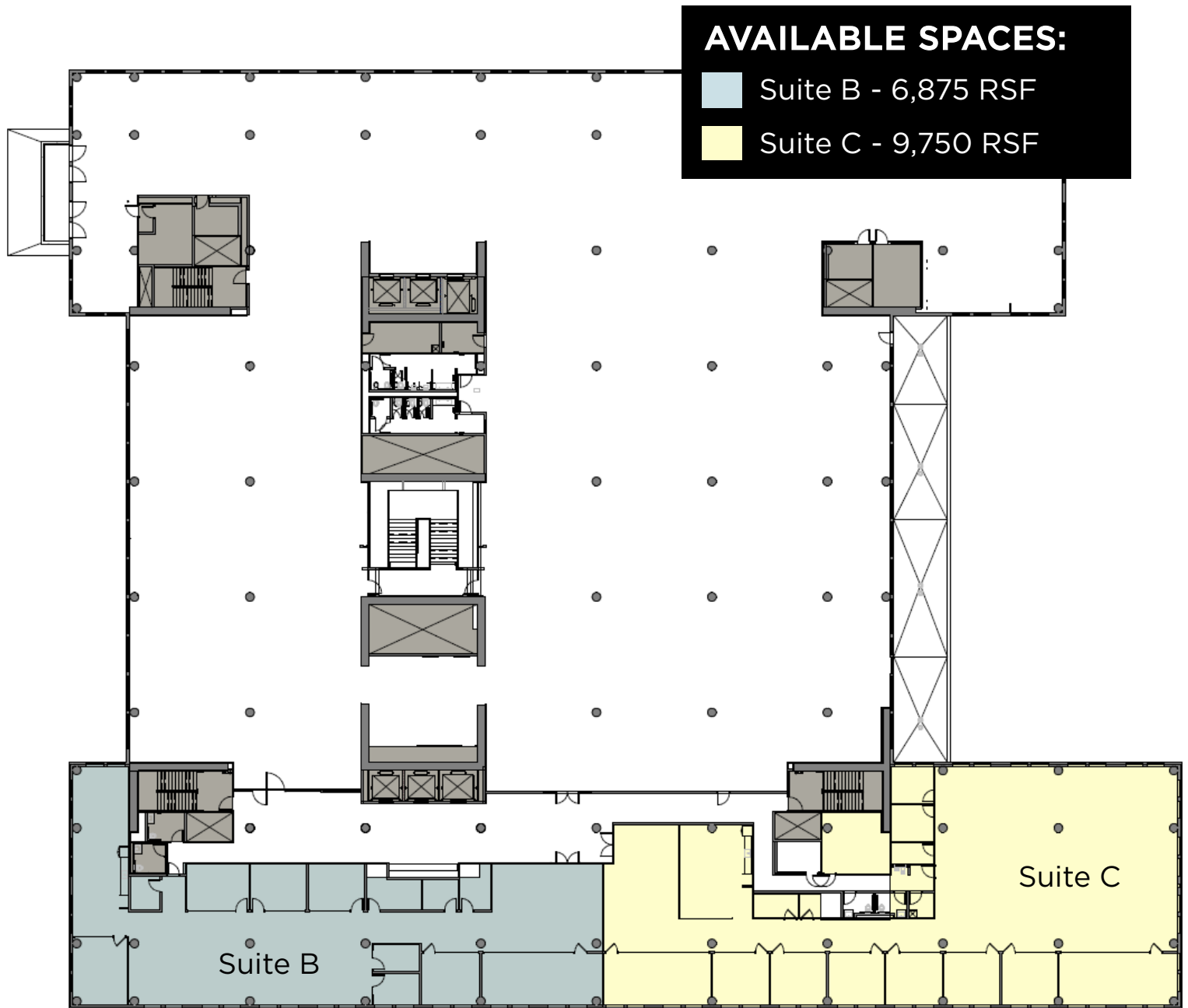
Q1 2024

KEY HIGHLIGHTS

- Trophy office sublease in world-class Letterman Digital Arts Center
- Beautiful Presidio park views
- Access to impressive onsite amenities: cafeteria, gym, ample parking
- Subtenant Improvements – spec suites with some subtenant input potential

FLOORPLAN

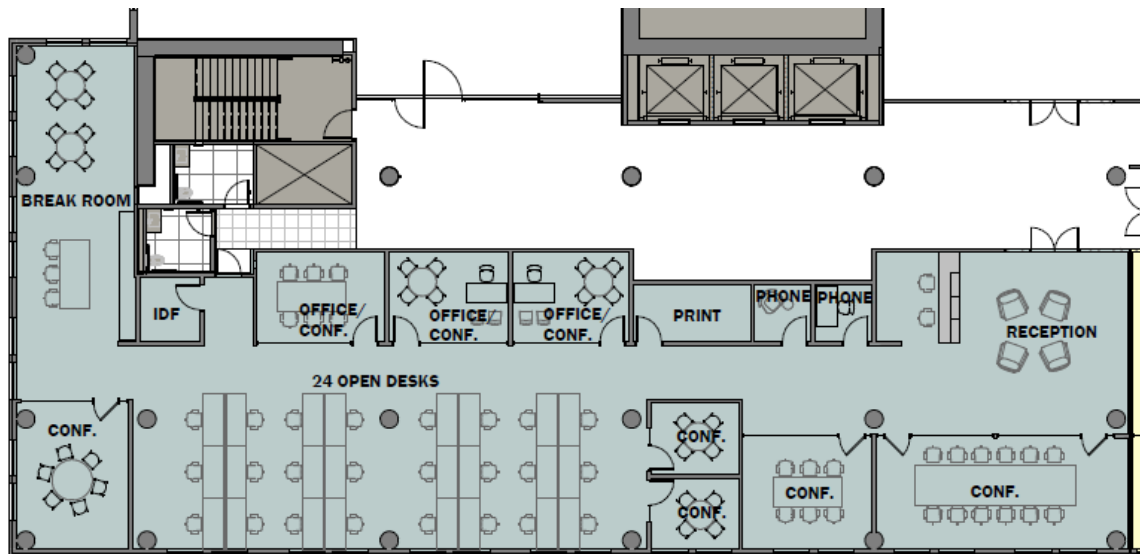
6th Floor | Suites B & C



FLOORPLAN

Hypothetical Furniture Plans

Suite B | West Tenant with Furniture



Suite C | East Tenant with Furniture

