

# *785 Market Street*

## Entire 10<sup>th</sup> Floor

SAN FRANCISCO, CA 94103



**PLUG & PLAY OFFICE SUBLEASE | 6,618 RSF**

**CAMERON LOVE**

Senior Vice President

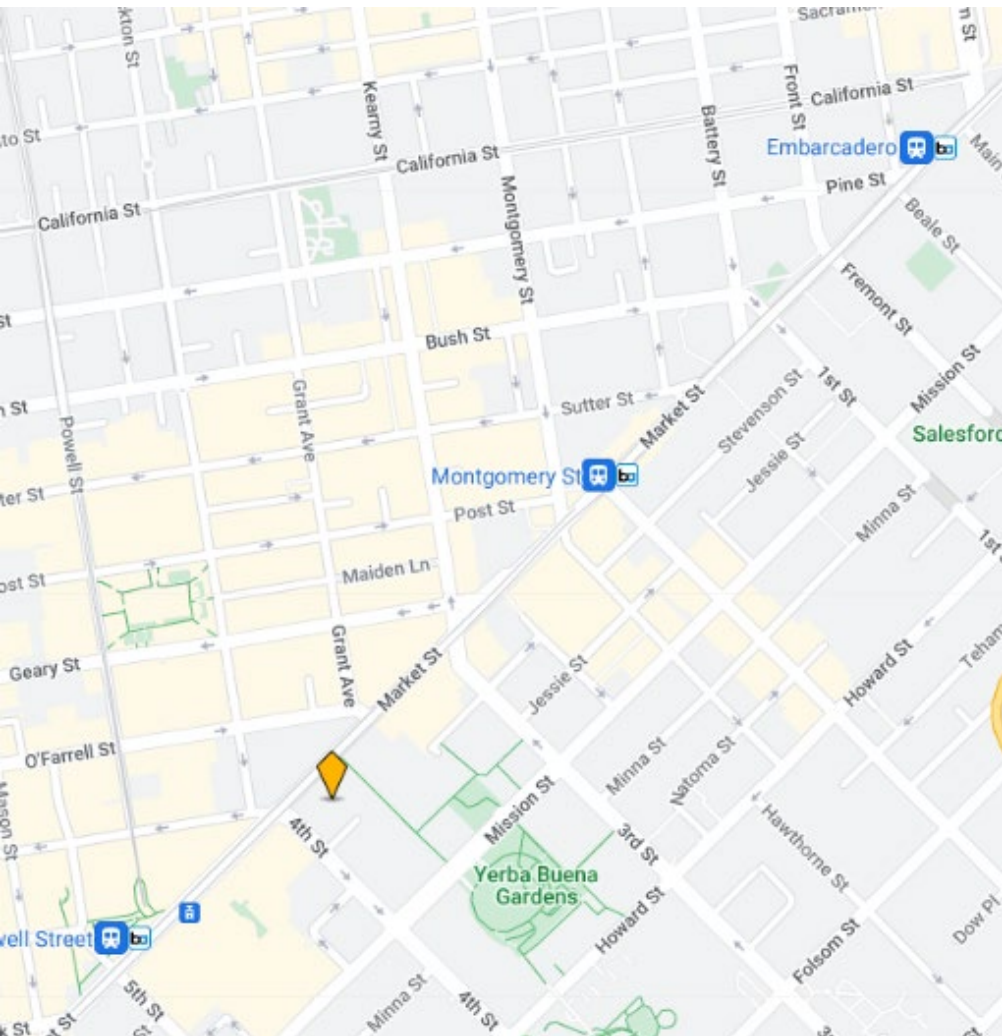
Lic. #01914963

[cameron@hughesmarino.com](mailto:cameron@hughesmarino.com)

415.745.5157

**HUGHES**  
MARINO

# SUBLEASE INFORMATION



## **BUILDING NAME**

Humboldt Bank Building

## **BUILDING ADDRESS**

785 Market Street, San Francisco, CA 94103

## **AVAILABLE RSF**

Suite 1050 - 6,618 RSF

## **ASKING RATE**

\$40/SF/Year FS

## **SUBLEASE TERM**

August 31, 2024

## **AVAILABLE**

Upon Consent

## **KEY HIGHLIGHTS**

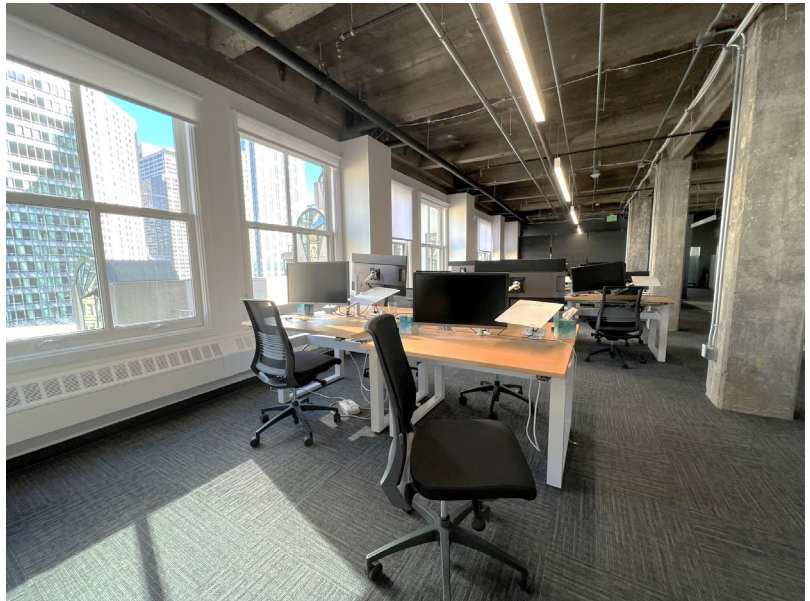
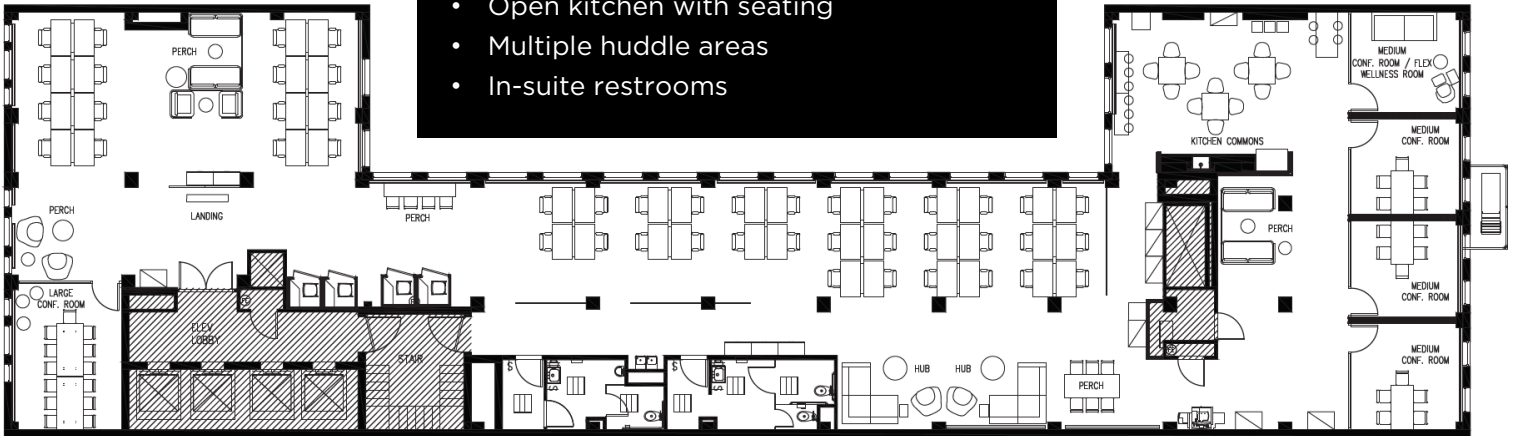
- Plug & Play, Full-Floor Office Sublease with great natural light and gorgeous downtown views
- Historic building with great character and convenient Market Street location
- Great natural light, exposed ceilings, and modern finishes throughout the suite

# FLOORPLAN

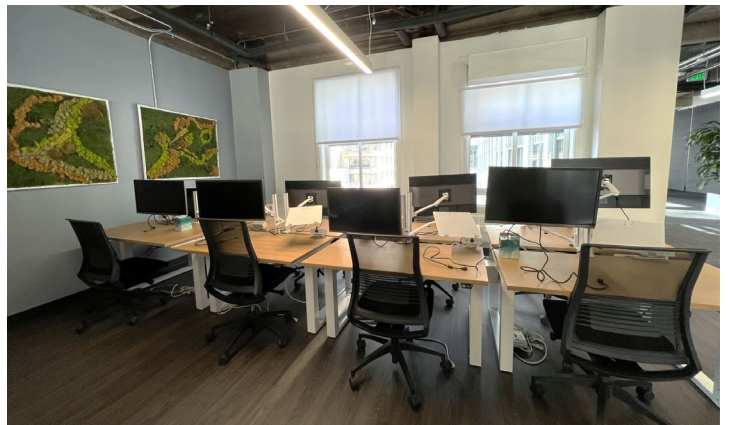
## Suite 1050 | 6,618 RSF

### SPACE HIGHLIGHTS

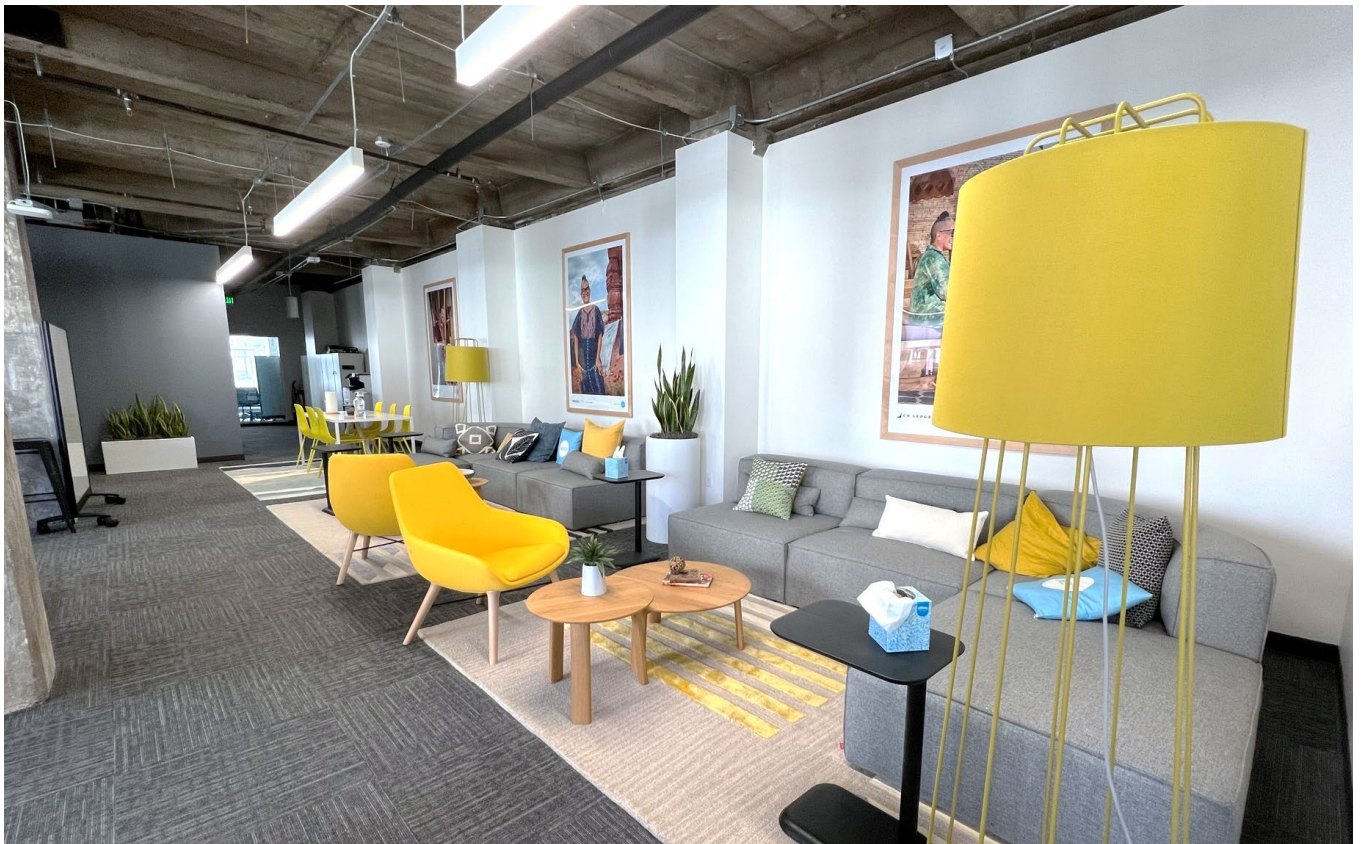
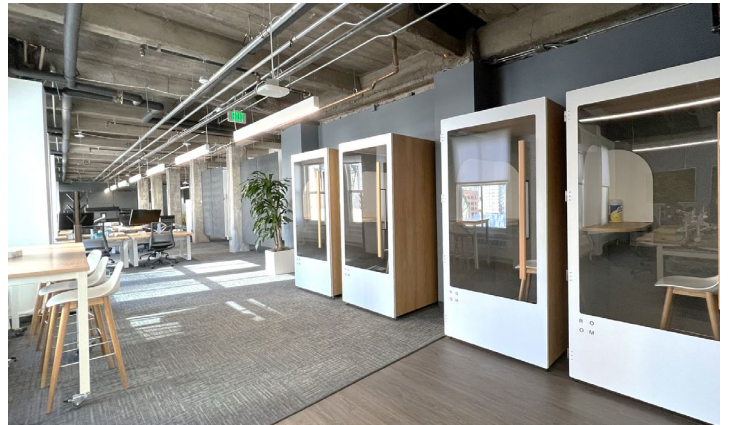
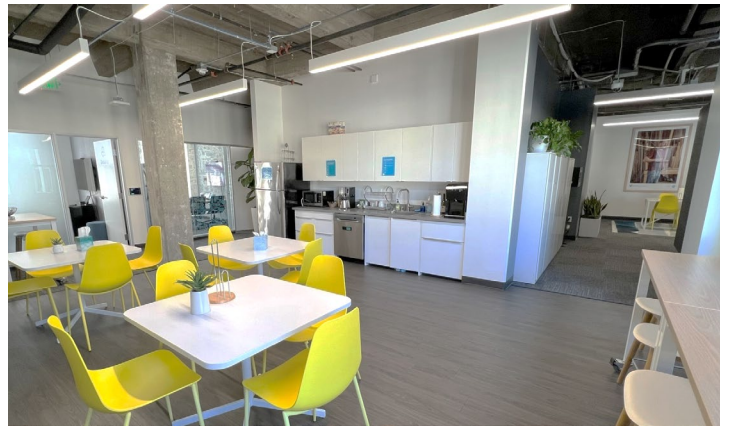
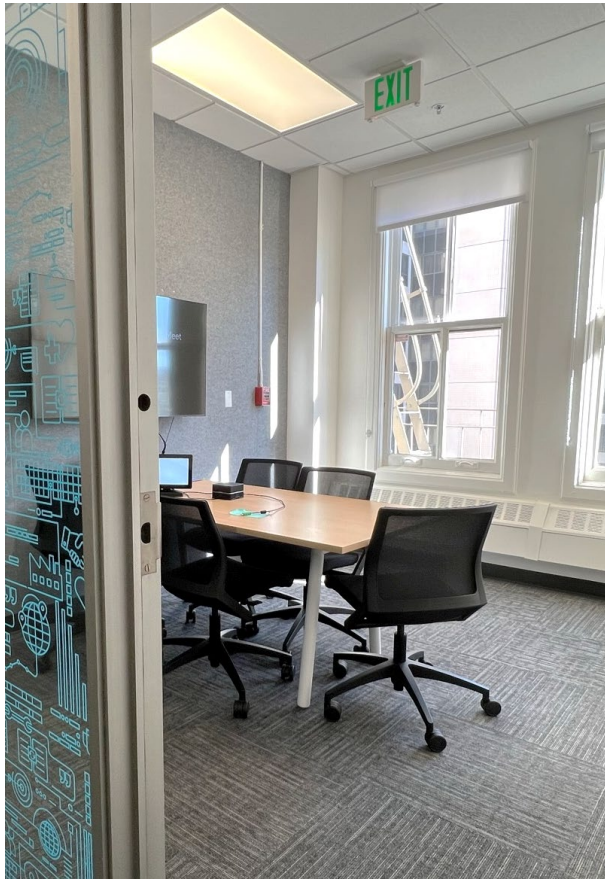
- 1 Large and 3 Medium Conference Rooms
- Wellness Room
- 46 Desks
- 4 Phone Booths
- Open kitchen with seating
- Multiple huddle areas
- In-suite restrooms



785 MARKET STREET, SUITE 1050



785 MARKET STREET, SUITE 1050



1 CALIFORNIA STREET, SUITE 1650  
SAN FRANCISCO, CA 94111  
415.431.3211 | [hughesmarino.com](http://hughesmarino.com)

HUGHESMARINO