

650 California Street

21st Floor

SAN FRANCISCO, CA 94108

New
Reduced
Rate!



PLUG & PLAY OFFICE SUBLEASE | AVAILABLE NOW

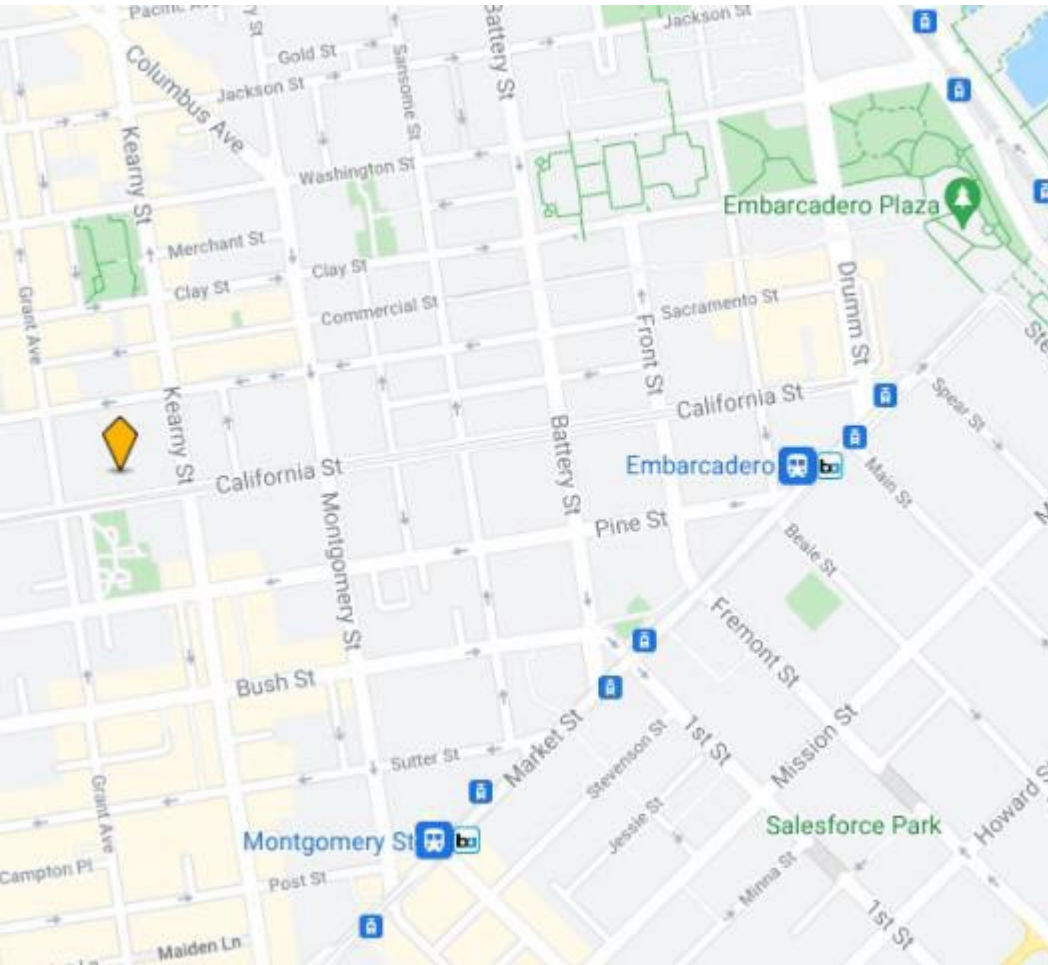
14,712 RSF

HUGHESMARINO

CALE MILLER
Senior Vice President
cale@hughesmarino.com
(415) 890-5918

Co-Listed with:
ERIC DANIELSON
edanielson@dlres.net
(925) 683.8052

SUBLEASE INFORMATION



BUILDING ADDRESS

650 California Street,
San Francisco, CA 94108

AVAILABLE RSF

Full 21st Floor - 14,712 RSF

ASKING RATE

\$69.50/SF/YR Full Service

AVAILABLE NOW

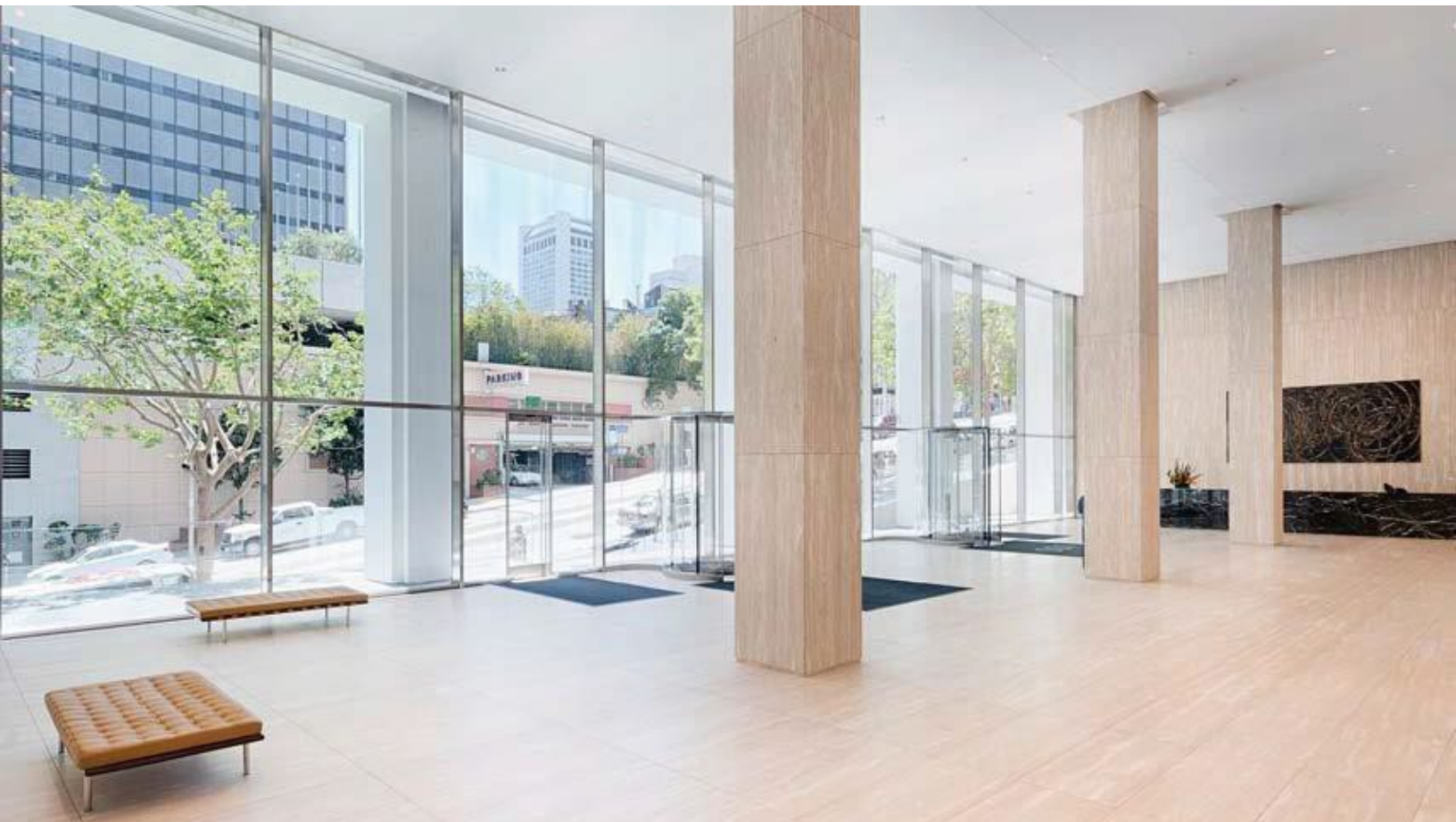
AVAILABLE THROUGH

August 31, 2027 - longer term
potentially available

KEY HIGHLIGHTS

- Class A, Plug & Play Sublease with unique large portal windows
- Fully outfitted with custom/state of the art furnishings
- Great natural light throughout the space with views to the north, east, and west
- Incredible views of The Bay, Coit Tower, Alcatraz, and Nob Hill

BUILDING INFORMATION

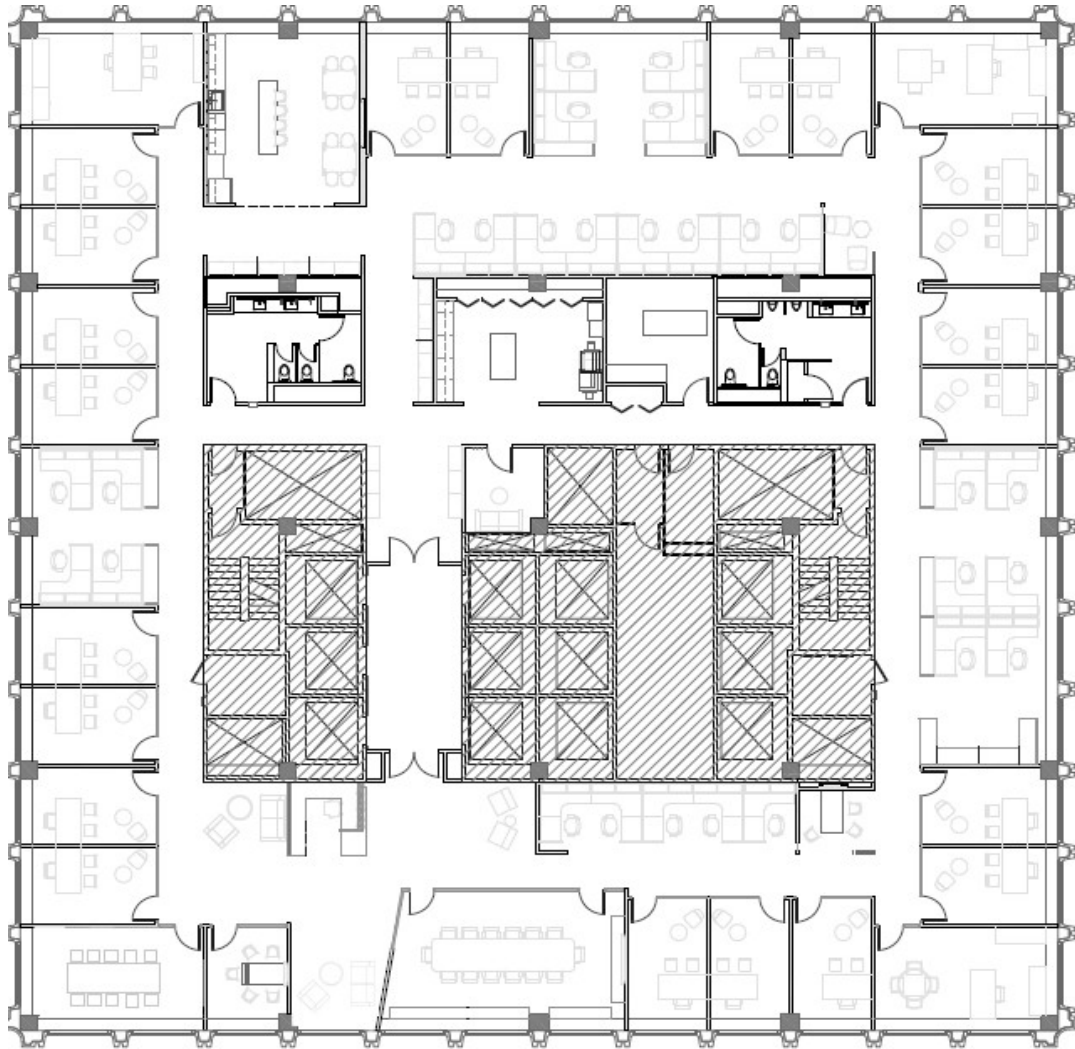


HIGHLIGHTS AND TENANT AMENITIES

- Prestigious California Street address on San Francisco's famed cable-car line
- Immediate proximity to numerous restaurants, hotels and retail amenities
- Four blocks from Montgomery BART station
- Valet-parked garage, secure bike parking, state of the art fitness center, shower/ locker rooms
- Tenant amenities include building common conference room, lobby Café, and tenant lounge
- LEED Gold Certified, Energy Star rated building
- On-site building management

FLOOR PLAN

21st Floor | 14,712 RSF



SPACE HIGHLIGHTS

- 24 Private Offices
- 1 Huddle Room
- 2 Conference Rooms
- 27 Workstations
- Kitchen and Reception Area

650 CALIFORNIA STREET, 21ST FLOOR



650 CALIFORNIA STREET, 21ST FLOOR

