

4633 Old Ironsides Drive

Suite 160

SANTA CLARA, CA 95054



OFFICE SUBLEASE | AVAILABLE NOW

1,945 RSF

MICHELLE QUINN

michelle@hughesmarino.com

415.425.0742

Lic. #02167892

HUGHESMARINO

BUILDING INFORMATION



ADDRESS

4633 Old Ironsides Drive,
Suite 160,
Santa Clara, CA 95054

AVAILABLE

Immediately

ASKING RATE

\$1.75/sf/FS

AVAILABLE THROUGH

March 2026

DESCRIPTION

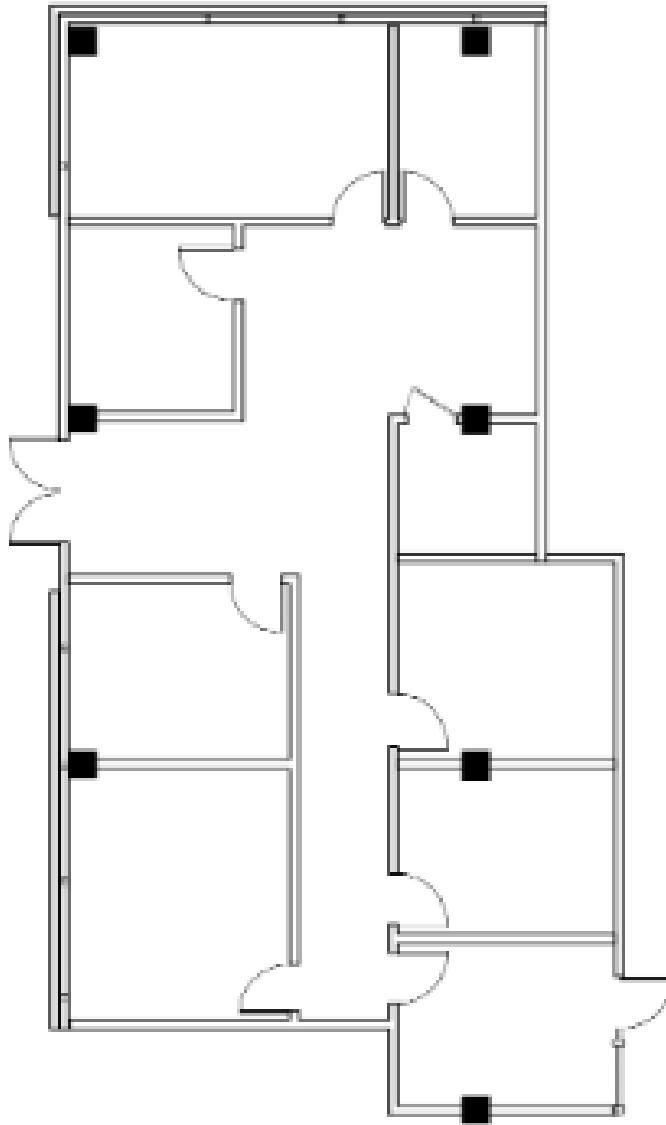
- Parkway Plaza is conveniently located near Levi's Stadium and the San Jose International Airport
- On-Site Property Management Office
- Common Area Courtyards with Free WiFi
- Online Maintenance Request System
- Access to (2) Common Area Conference Rooms (Complimentary TV/HDMI and White Boards)
- Newly Updated High Speed Internet Connectivity



HUGHES MARINO

FLOOR PLAN

1,945 RSF



4633 OLD IRONSIDES DRIVE, SUITE 160



4633 OLD IRONSIDES DRIVE, SUITE 160



CONTACT INFORMATION



MICHELLE QUINN

michelle@hughesmarino.com

415.425.0742

Lic. #02167892

**2100 GENG ROAD, SUITE 210,
PALO ALTO, CA 94303**
408.292.3211 | hughesmarino.com

HUGHESMARINO