

8885 RIO SAN DIEGO DRIVE SUITE 232

San Diego, CA 92108



OFFICE SUBLEASE | AVAILABLE NOW

2,109 RSF

HUGHESMARINO

BUILDING INFORMATION



BUILDING

Rio Vista

ADDRESS

8885 Rio San Diego Drive

Suite 232

San Diego, CA 92108

AVAILABLE

Immediately

ASKING RATE

\$1.50/SF + Utilities

AVAILABLE THROUGH

November 30, 2025

ADDITIONAL FEATURES

- In the heart of Mission Valley, this sublease opportunity is complete with contemporary finishes, an open and flexible layout, and filled with natural light.
- The suite comes fully furnished, making it an ideal plug-and-play space for a law firm or professional service firm.
- Available immediately, this competitively priced space is perfect for companies seeking a dynamic and well-connected office building.

LOCATION HIGHLIGHTS



**TRANSIT
SCORE**

46

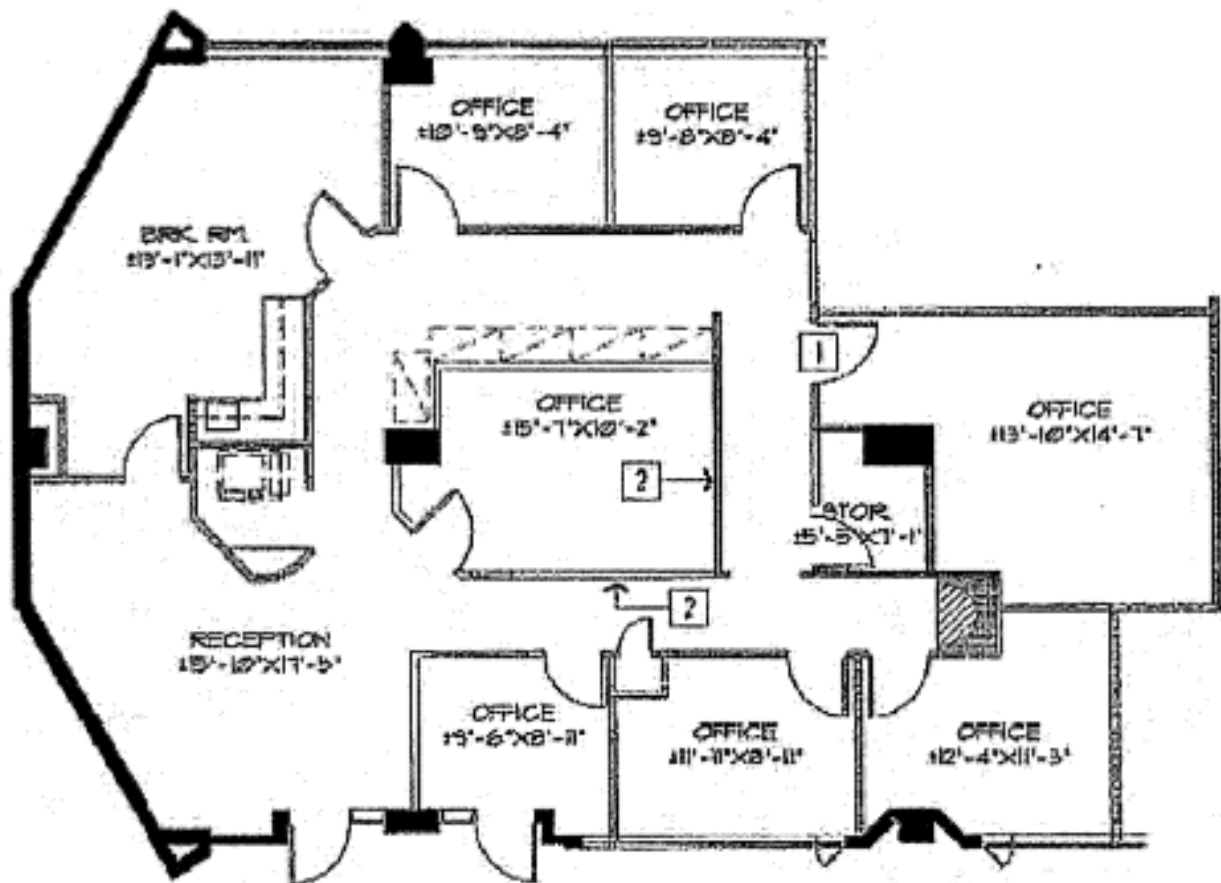
**WALK
SCORE**

58

KEY HIGHLIGHTS

- Excellent I-8 and I-805 access and visibility
- Abundant Retail, Restaurant & Health Club Amenities nearby in Mission Valley
- Walking distance to the Rio Vista Trolley Station
- South facing views of the San Diego River

FLOOR PLAN



8885 RIO SAN DIEGO DRIVE, SUITE 232



8885 RIO SAN DIEGO DRIVE, SUITE 232



8885 RIO SAN DIEGO DRIVE, SUITE 232



CONTACT INFORMATION



STAR HUGHES-GORUP

hughesmarino.com
619.238.2111

Broker Lic. #01907998



MACK BONEBRAKE

mack@hughesmarino.com
619.630.2777

Broker Lic. #02240793

**1450 FRONT STREET
SAN DIEGO, CA 92101**
619.238.2111 | hughesmarino.com

HUGHESMARINO