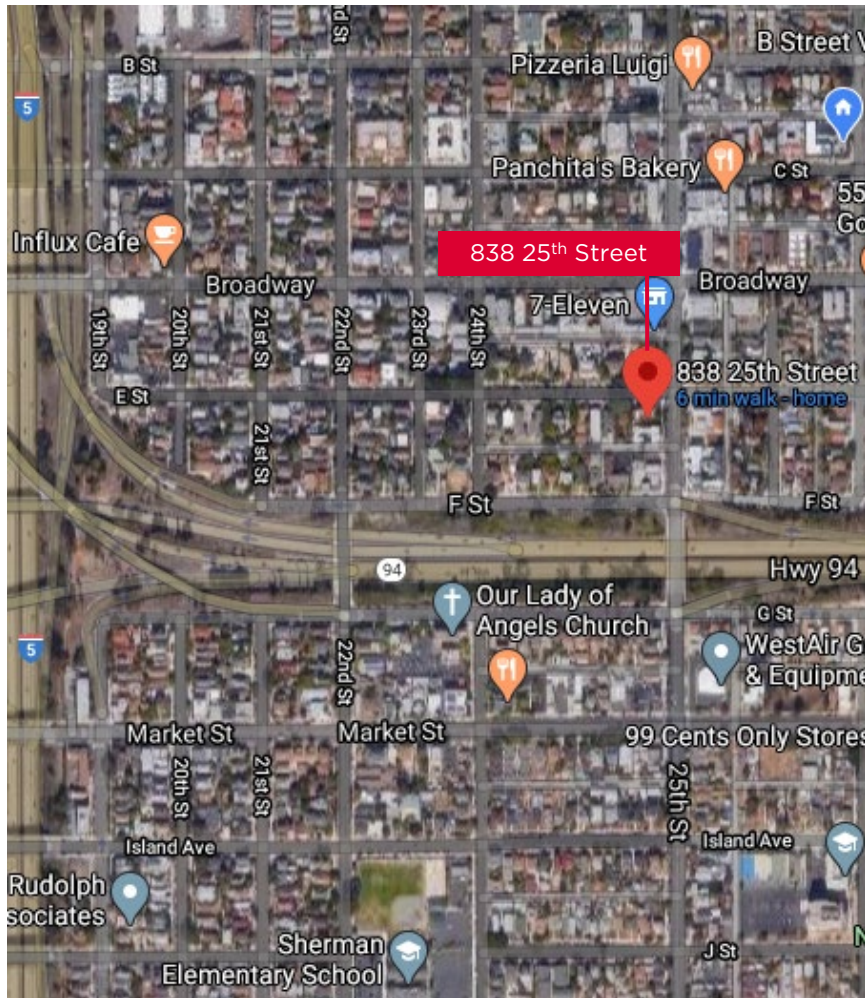




838 25TH STREET SUITE B

Office Sublease | 432 RSF

HUGHES MARINO



Building Information

Address: 838 25th Street, Suites B,
San Diego, CA 92102

Available: 432 Rentable Square Feet

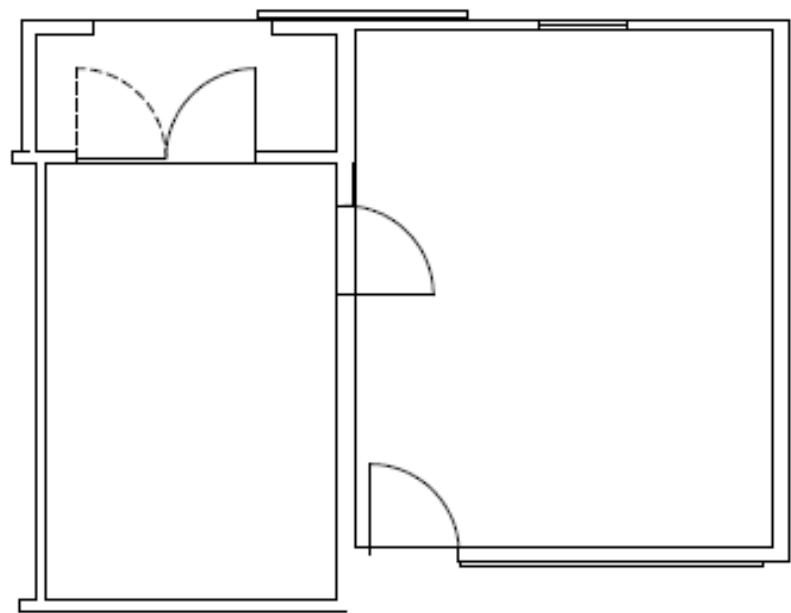
Asking Rate: \$2.30 per RSF

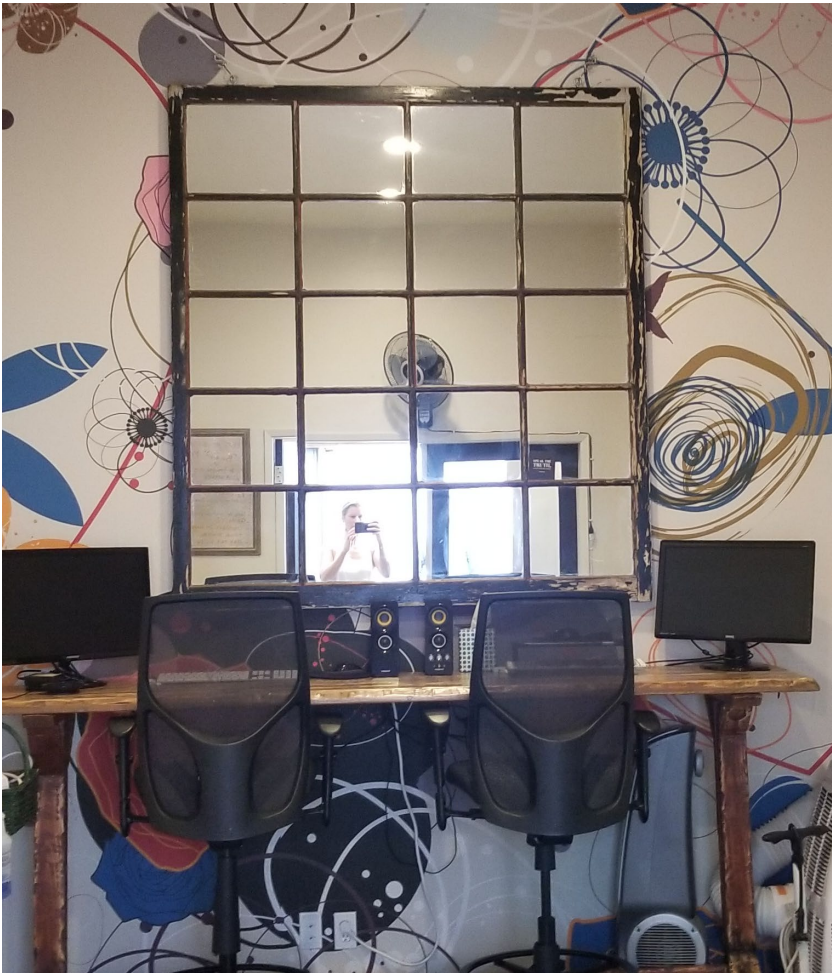
Available Through: 12/31/2022

Description

Creative office in a beautiful historic building in Golden Hill.

Suite B







For More Information Please Contact:

Star Hughes-Gorup

Senior Vice President & Director

hughesmarino.com

(619) 238-2111

Broker License #01907998