

655 WEST BROADWAY SUITE 900

San Diego, CA 92101



OFFICE SUBLEASE | AVAILABLE IMMEDIATELY

130 – 7,770 RSF

STAR HUGHES-GORUP | Senior Vice President & Director
619.238.2111 | hughes@hughesmarino.com

HUGHESMARINO

BUILDING INFORMATION



BUILDING

First Allied Plaza

ADDRESS

655 West Broadway,
Suite 900,
San Diego, CA 92101

AVAILABLE

Immediately

ASKING RATE

\$1,400+ per office on an
individual basis

\$3.00/SF for full or partial suite

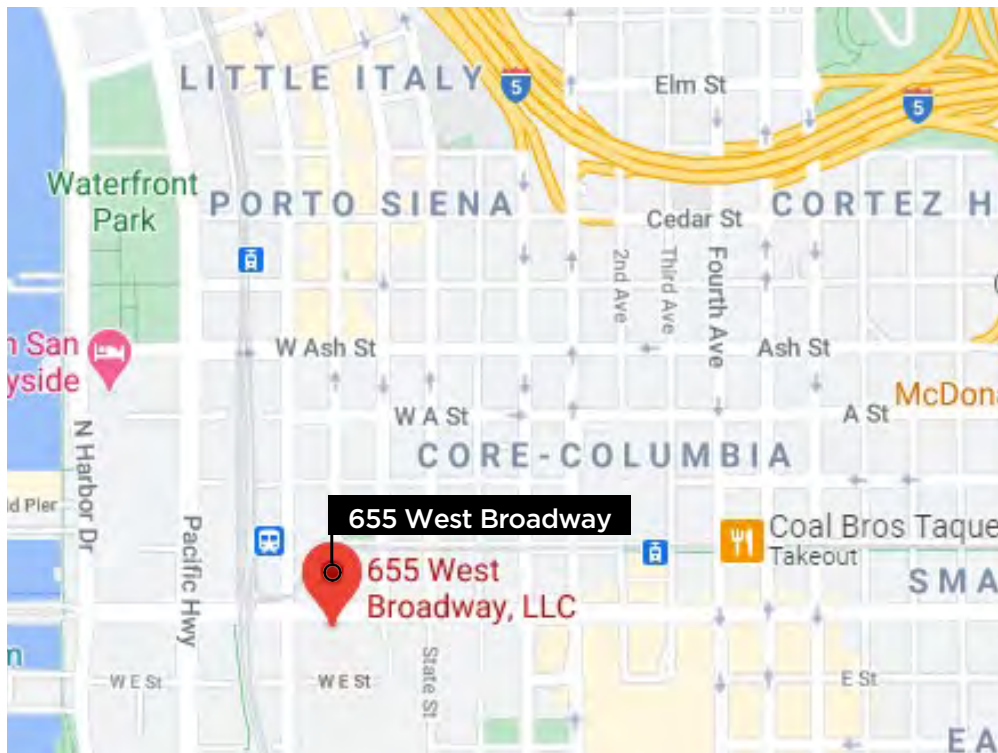
TERM

Flexible

ADDITIONAL FEATURES

- Beautiful Class A law office in the coveted 655 West Broadway building
- Prime corner of the building with bay views and high-end finishes
- Available for sublease on a single office basis, partial suite (roughly 2,000 SF), or full suite (7,770 SF) basis

LOCATION HIGHLIGHTS



TRANSIT
SCORE

82

WALK
SCORE

93

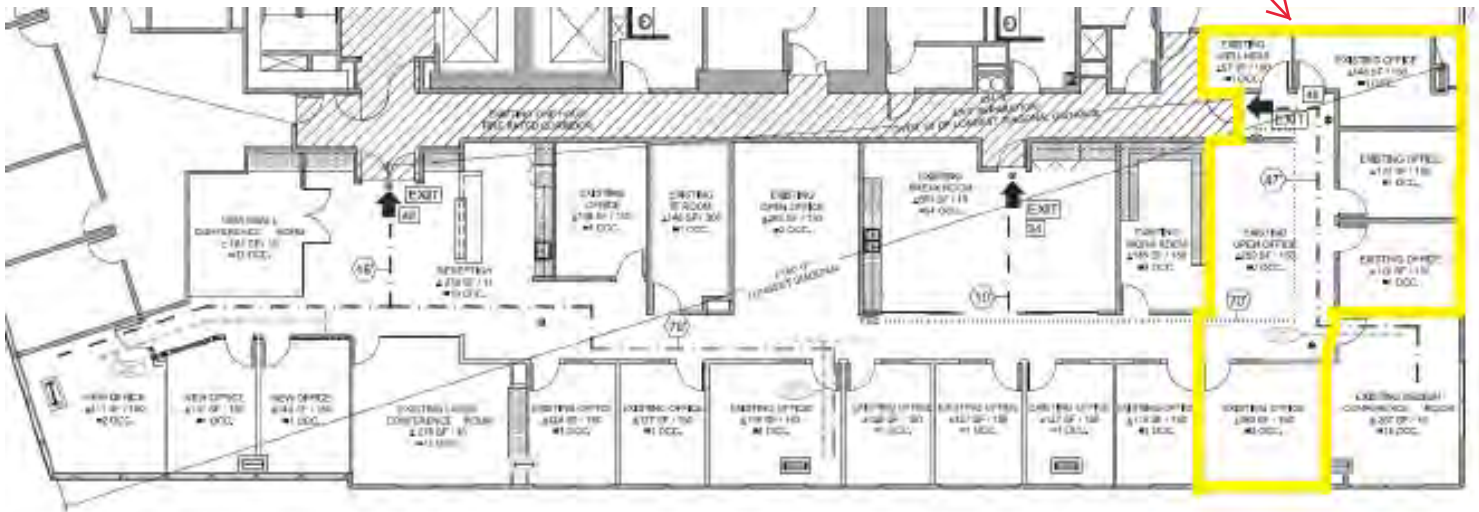
KEY HIGHLIGHTS

- Excellent I-5 and CA-163 access and visibility
- Abundant Retail, Restaurant & Health Club Amenities
- Walking distance to Little Italy, Gaslamp, and the waterfront

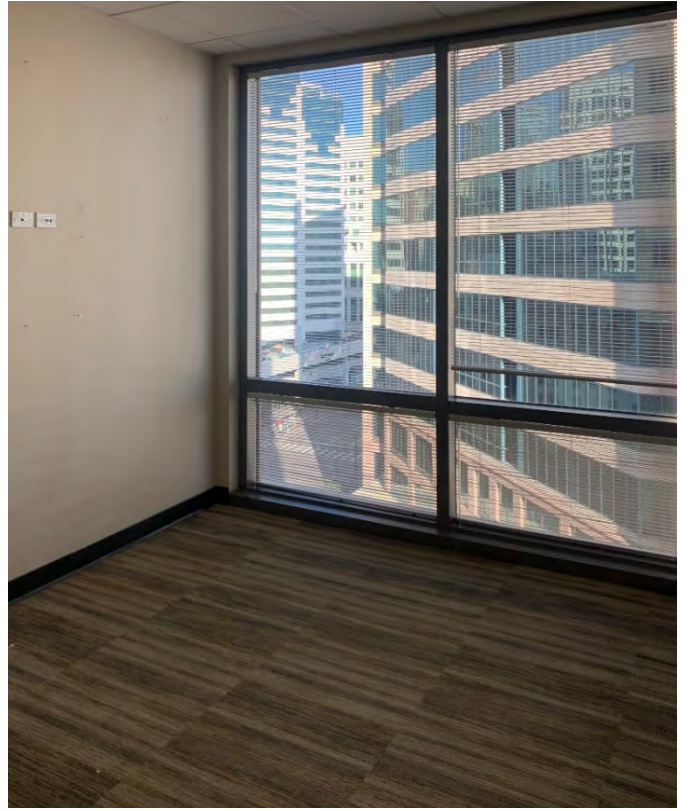
FLOOR PLAN

Either Full or Partial Sublease Available

Partial Sublease Opportunity



655 WEST BROADWAY, SUITE 900



655 WEST BROADWAY, SUITE 900



STAR HUGHES-GORUP | Senior Vice President & Director
619.238.2111 | hughesmarino.com

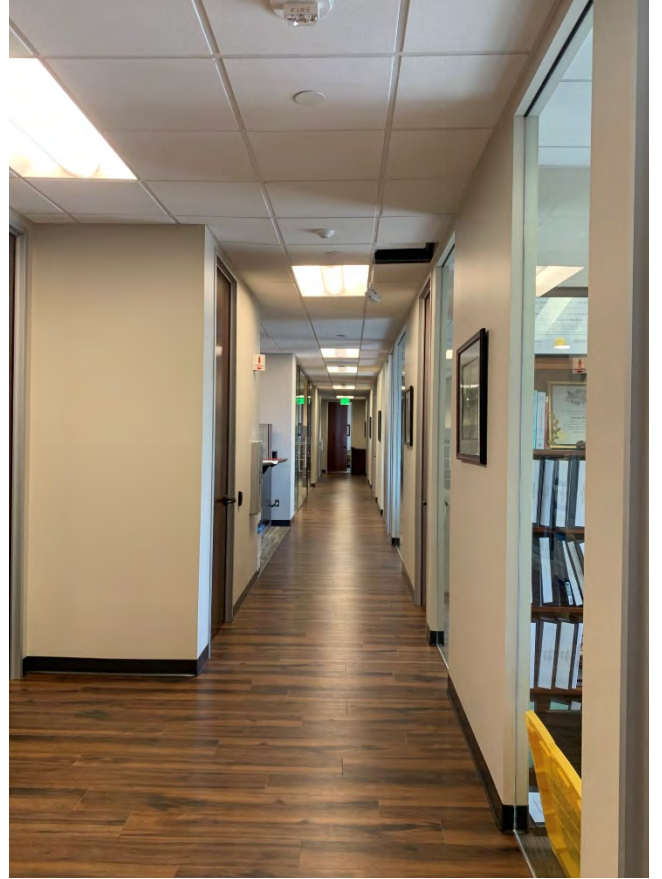
HUGHESMARINO

655 WEST BROADWAY, SUITE 900



STAR HUGHES-GORUP | Senior Vice President & Director
619.238.2111 | hughesmarino.com

655 WEST BROADWAY, SUITE 900



CONTACT INFORMATION



STAR HUGHES-GORUP
hughesmarino.com
619.238.2111
Broker Lic. #01907998

1450 FRONT STREET, SAN DIEGO, CA 92101
619.238.2111 | hughesmarino.com

HUGHESMARINO