

655 WEST BROADWAY SUITE 900

San Diego, CA 92101



OFFICE SUBLEASE | AVAILABLE
IMMEDIATELY

130 – 7,770 RSF

STAR HUGHES-GORUP | Senior Vice President & Director
619.238.2111 | hughesmarino.com

HUGHESMARINO

BUILDING INFORMATION



BUILDING

First Allied Plaza

ADDRESS

655 West Broadway,
Suite 900,
San Diego, CA 92101

AVAILABLE

Immediately

ASKING RATE

\$1,400+ per office on an
individual basis

\$3.75/SF for full or partial suite

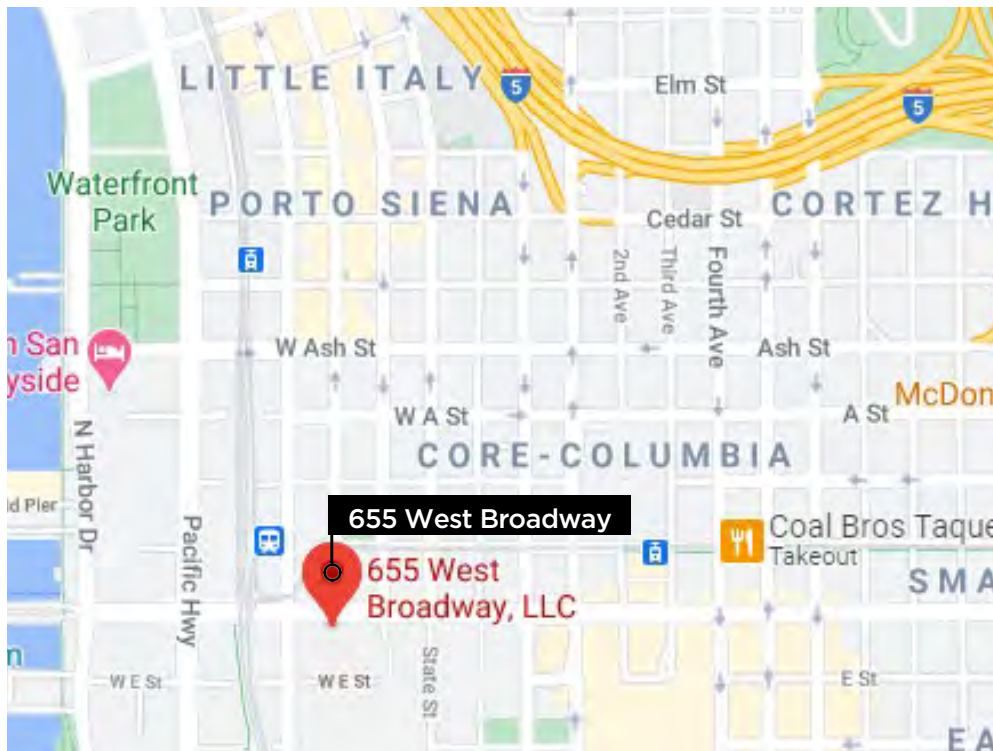
TERM

Flexible

ADDITIONAL FEATURES

- Beautiful Class A law office in the coveted 655 West Broadway building
- Prime corner of the building with bay views and high-end finishes
- Available for sublease on a single office basis, partial suite (roughly 3,500 SF), or full suite (7,770 SF) basis

LOCATION HIGHLIGHTS



TRANSIT
SCORE

82

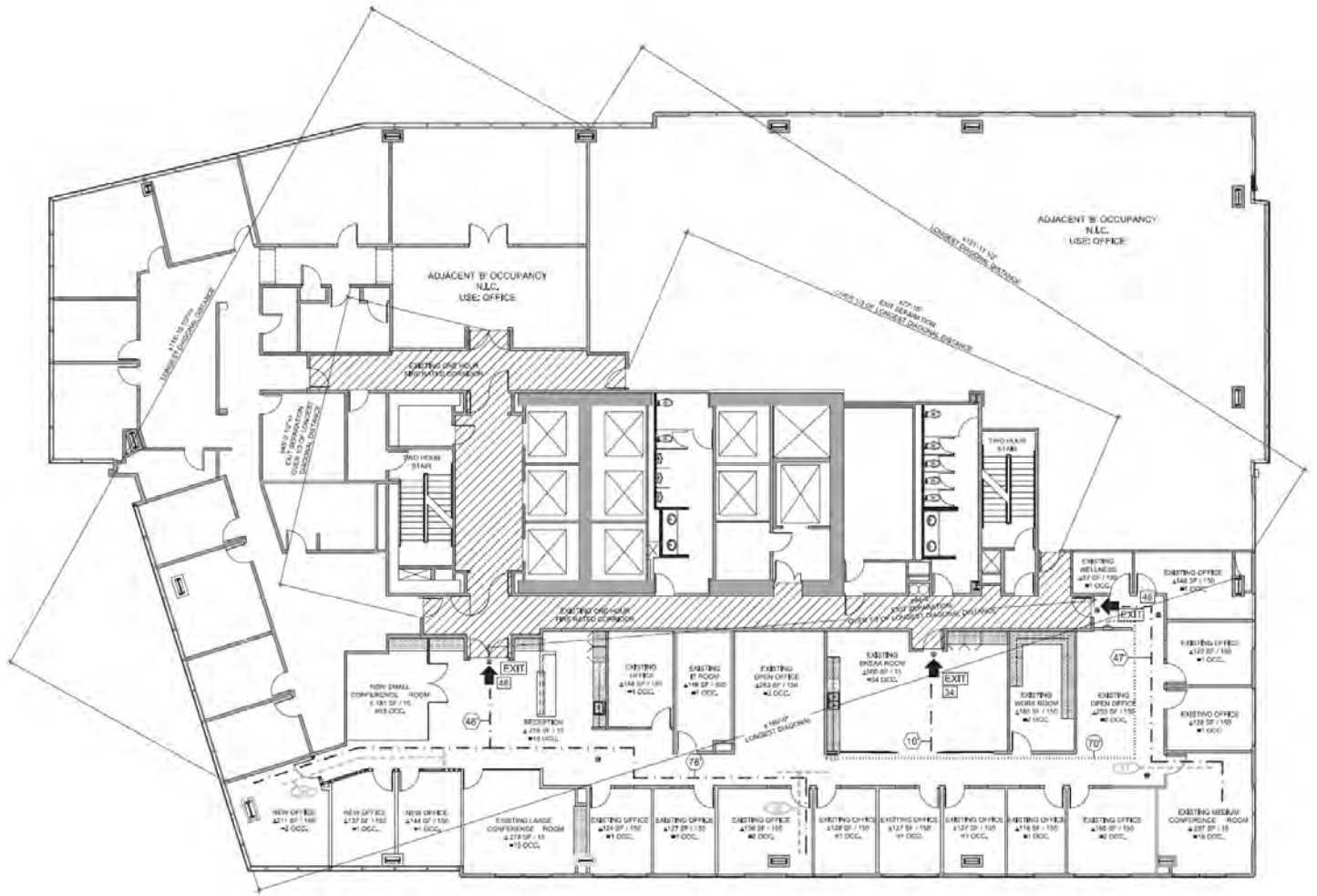
WALK
SCORE

93

KEY HIGHLIGHTS

- Excellent I-5 and CA-163 access and visibility
- Abundant Retail, Restaurant & Health Club Amenities
- Walking distance to Little Italy, Gaslamp, and the waterfront

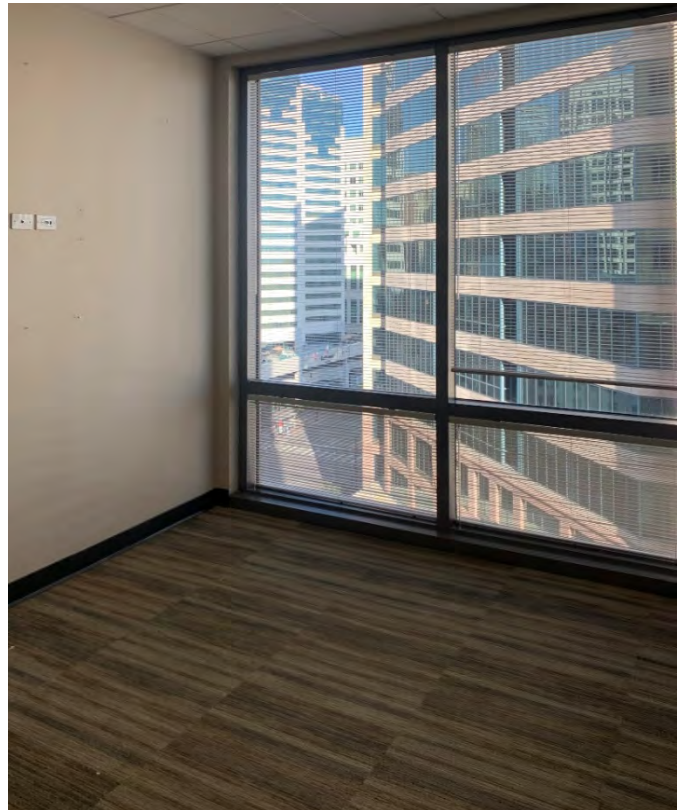
FLOOR PLAN



STAR HUGHES-GORUP | Senior Vice President & Director
619.238.2111 | hughes@hughesmarino.com

HUGHESMARINO

655 WEST BROADWAY, SUITE 900



655 WEST BROADWAY, SUITE 900



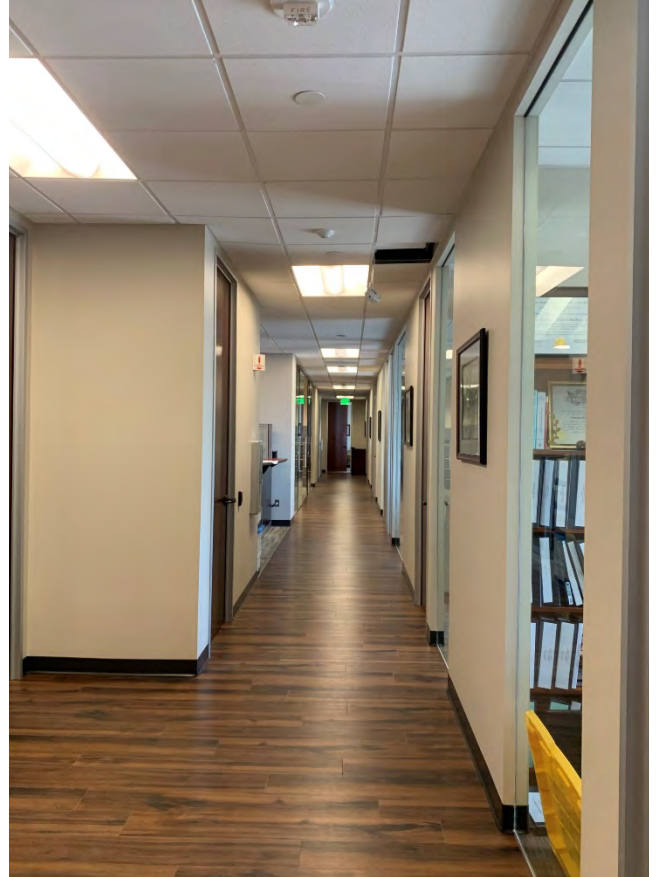
STAR HUGHES-GORUP | Senior Vice President & Director
619.238.2111 | hughesmarino.com

HUGHESMARINO

655 WEST BROADWAY, SUITE 900



655 WEST BROADWAY, SUITE 900



CONTACT INFORMATION



STAR HUGHES-GORUP

hughesmarino.com

619.238.2111

Broker Lic. #01907998

1450 FRONT STREET, SAN DIEGO, CA 92101

619.238.2111 | hughesmarino.com

HUGHESMARINO