

# 600 B STREET SUITE 2490

SAN DIEGO, CA 92101



OFFICE SUBLEASE  
450 RSF

HUGHES MARINO

# BUILDING INFORMATION

**ADDRESS**

600 B Street,  
Suite 2490,  
San Diego, CA 92101

**ASKING  
RATE**

\$1,000-\$1,500 per  
window office;  
\$500-800 per  
interior office

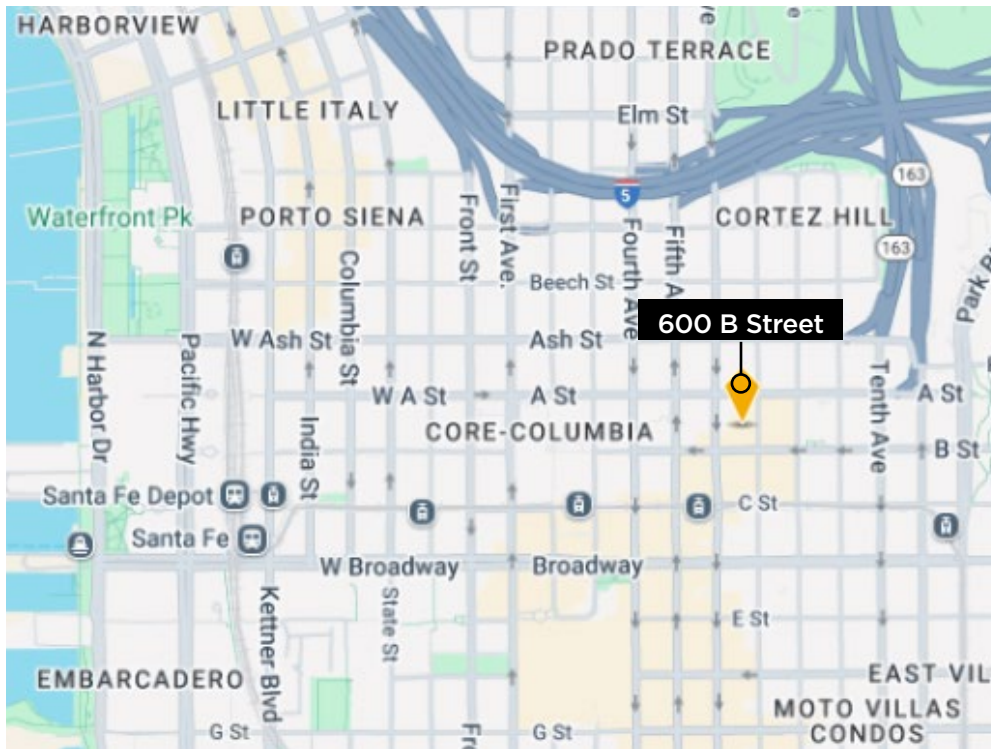
**AVAILABLE  
THROUGH**

October 31, 2027

**ADDITIONAL FEATURES**

- 1 window office and 2 interior offices available for sublease in a beautiful law firm suite on the penthouse of 600 B Street!
- Panoramic views towards Balboa Park and the airport
- Phone and mail service included

# LOCATION HIGHLIGHTS



**TRANSIT  
SCORE**

81

**WALK  
SCORE**

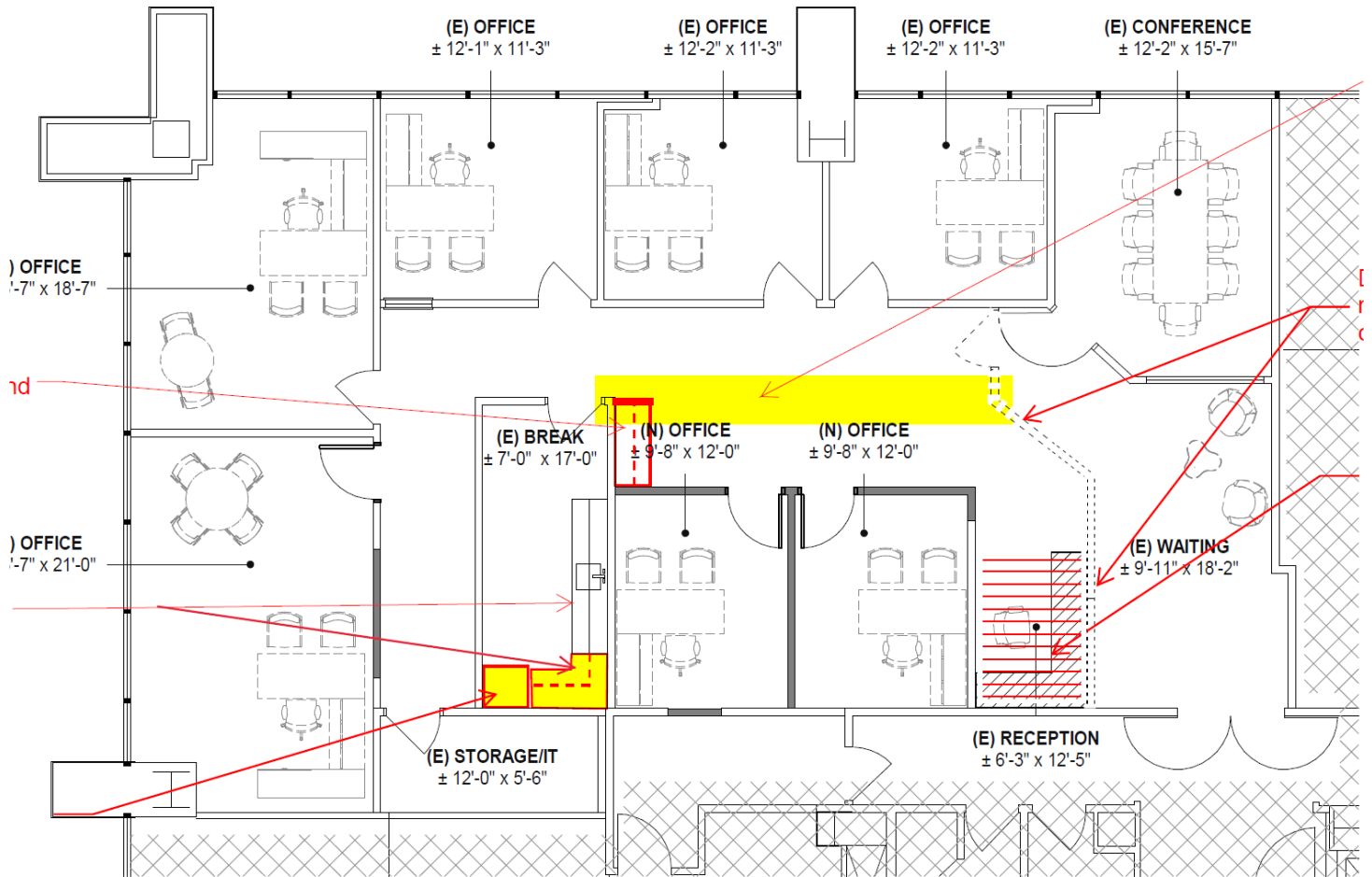
99

## KEY HIGHLIGHTS

- Excellent I-5 and CA-163 access and visibility
- Abundant Retail, Restaurant & Health Club Amenities
- Walking distance to Little Italy, Gaslamp, and the waterfront



# FLOOR PLAN



# CONTACT INFORMATION



**STAR HUGHES-GORUP**

[hughesmarino.com](mailto:hughesmarino.com)

619.238.2111

Broker Lic. #01907998

**1450 FRONT STREET, SAN DIEGO, CA 92101**  
619.238.2111 | [hughesmarino.com](http://hughesmarino.com)

**HUGHES**MARINO