

4660 LA JOLLA VILLAGE DRIVE SUITE 650

SAN DIEGO, CA 92122



OFFICE SUBLEASE | AVAILABLE NOW

240 RSF

HUGHESMARINO

BUILDING INFORMATION



BUILDING

La Jolla Center I

ADDRESS

4660 La Jolla Village Drive,
Suite 650,
San Diego, CA 92122

AVAILABLE

Now

ASKING RENT

\$1,500 per month

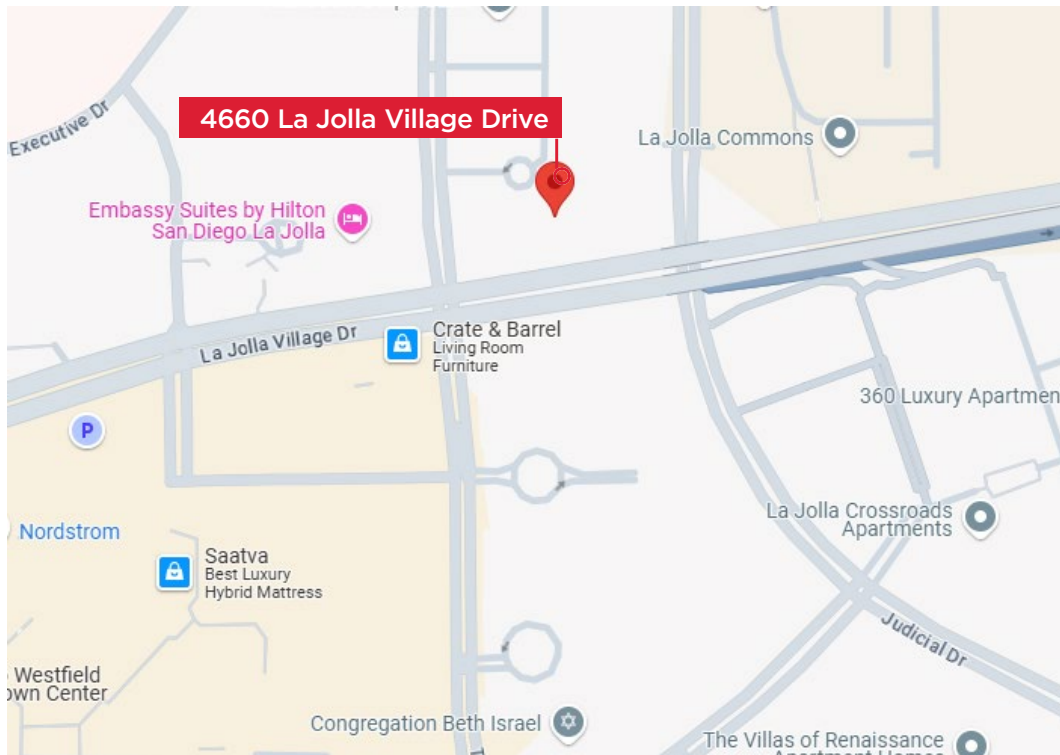
AVAILABLE THROUGH

July 31, 2026

ADDITIONAL FEATURES

- Spacious single furnished office available for sublease in a Class A law firm suite at La Jolla Center I! Shared space includes double-door entry, reception, and kitchen.

LOCATION HIGHLIGHTS



FREEWAY ACCESS



RETAIL & RESTAURANTS



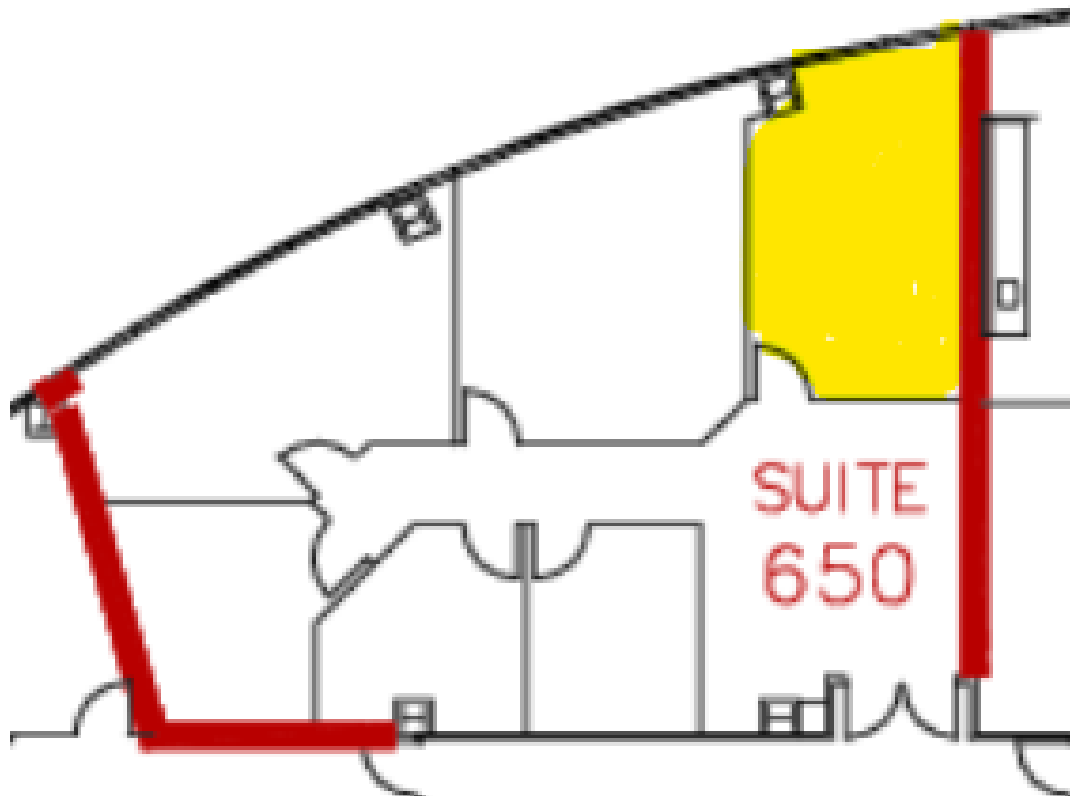
HEALTH CLUB



KEY HIGHLIGHTS

- Located less than 2 miles from the Pacific coastline in the desirable UTC area
- Easy access to I-805, I-5, and Highway 52
- Abundant on-site amenities including a fitness center, conference center, cafe, and outdoor workspaces
- Numerous additional retail, restaurant & health club amenities located nearby

FLOOR PLAN



4660 LA JOLLA VILLAGE DRIVE, SUITE 650



4660 LA JOLLA VILLAGE DRIVE, SUITE 650



CONTACT INFORMATION



STAR HUGHES-GORUP

hughesmarino@hughesmarino.com

(619) 238-2111

Broker Lic. #01907998

1450 FRONT STREET, SAN DIEGO
619.238.2111 | hughesmarino.com

HUGHESMARINO