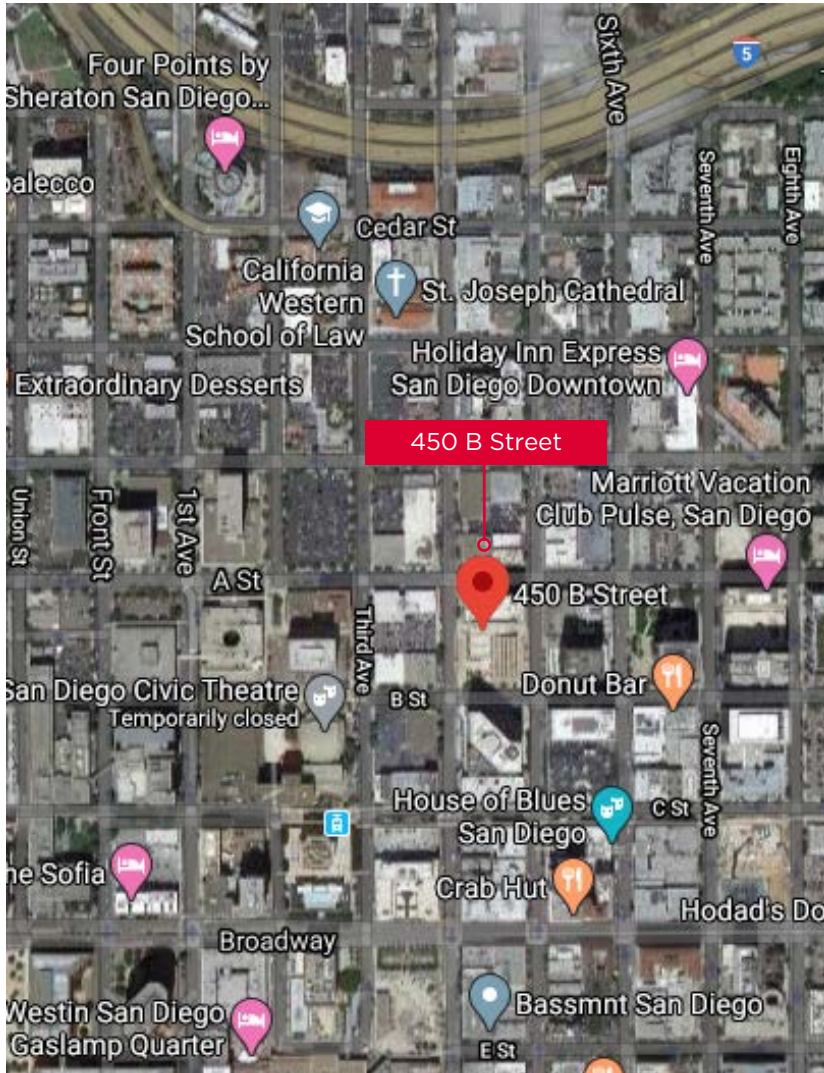




450 B STREET SUITE 650

Office Sublease | 225 - 6,634 RSF

HUGHESMARINO



Building Information

Address: 450 B Street, Suite 650,
San Diego, CA 92101

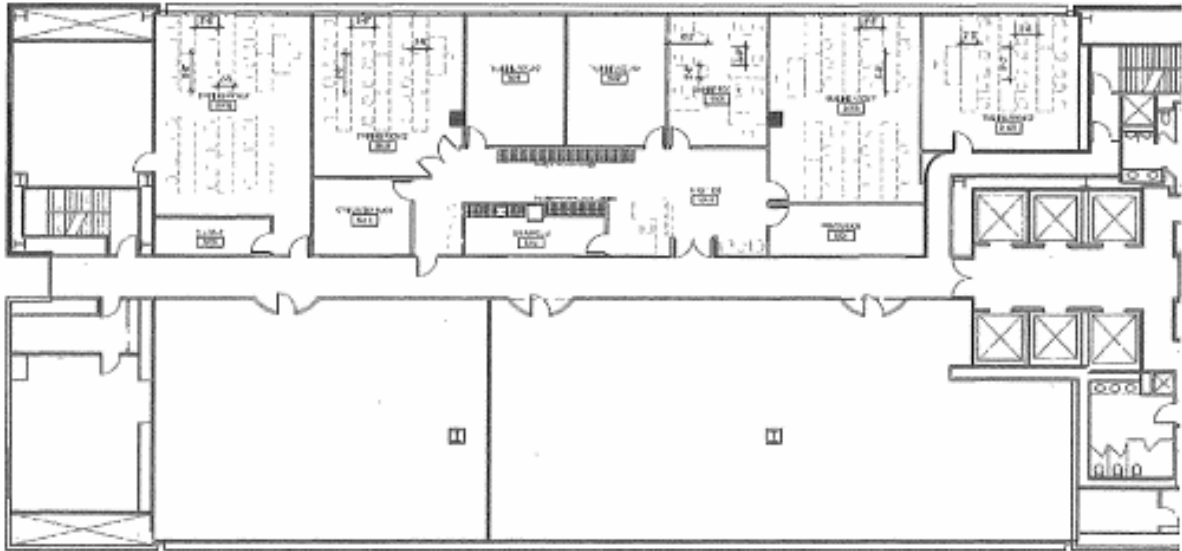
Available: 225 - 6,634 Rentable Square
Feet

Asking Rate: Negotiable

Available Through: Negotiable

Description

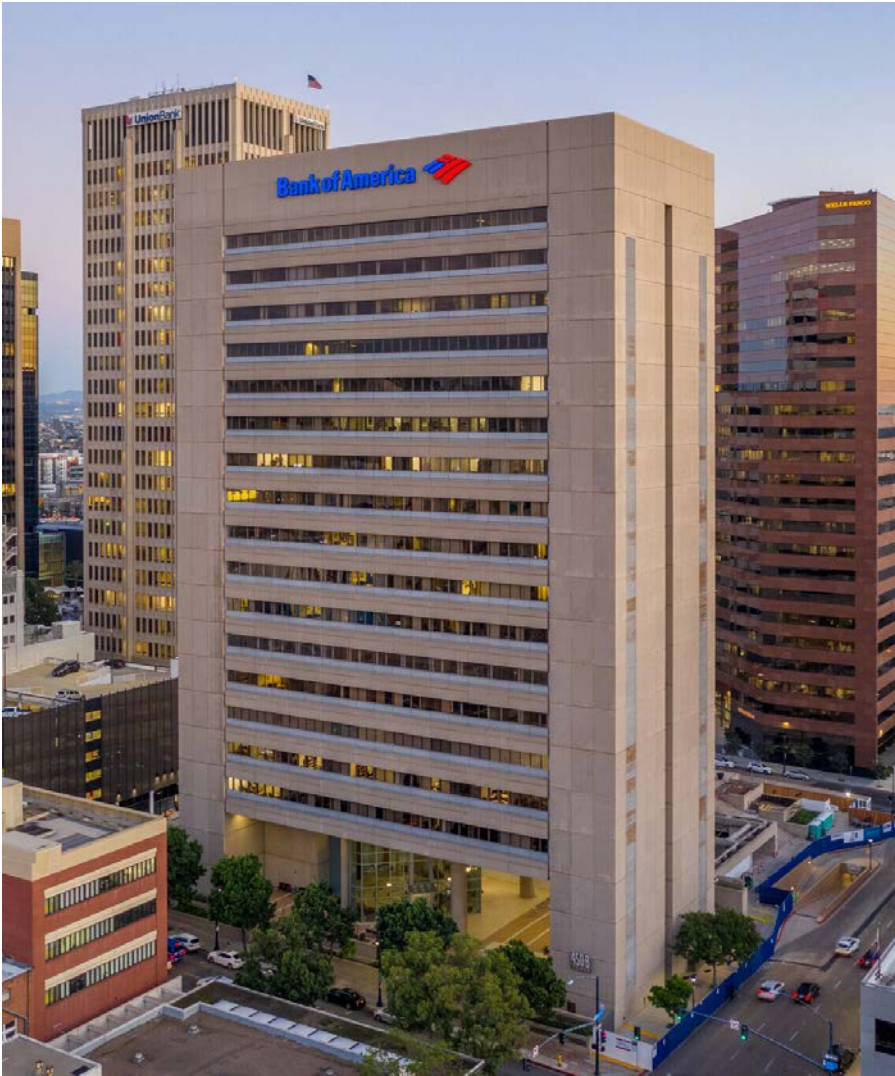
Newly built-out office space on the desirable B Street corridor! Offices varying in size, available for sublease separately or together, along with a shared conference room, break area, and reception space.



SPACE PLAN
SCALE 1/16"



450 B Street, Suite 650, San Diego | 225 - 6,634 RSF



For More Information Please Contact:

Star Hughes-Gorup

Senior Vice President & Director

hughsteam@hughesmarino.com

(619) 238-2111

Broker License #01907998