

402 WEST BROADWAY SUITE 2100 & 2200

SAN DIEGO, CA 92101



OFFICE SUBLEASE | AVAILABLE IMMEDIATELY
10,957-22,178 RSF

DAVID MARINO
david@hughesmarino.com
619.972.5672
Broker Lic. #01059021

STAR HUGHES-GORUP
hughsteam@hughesmarino.com
619.238.2111
Broker Lic. #01907998

HUGHESMARINO

BUILDING INFORMATION



ADDRESS

402 West Broadway,
Suite 2100 & 2200,
San Diego, CA 92101

AVAILABLE

Vacant

ASKING RATE

\$2.35/SF

AVAILABLE THROUGH

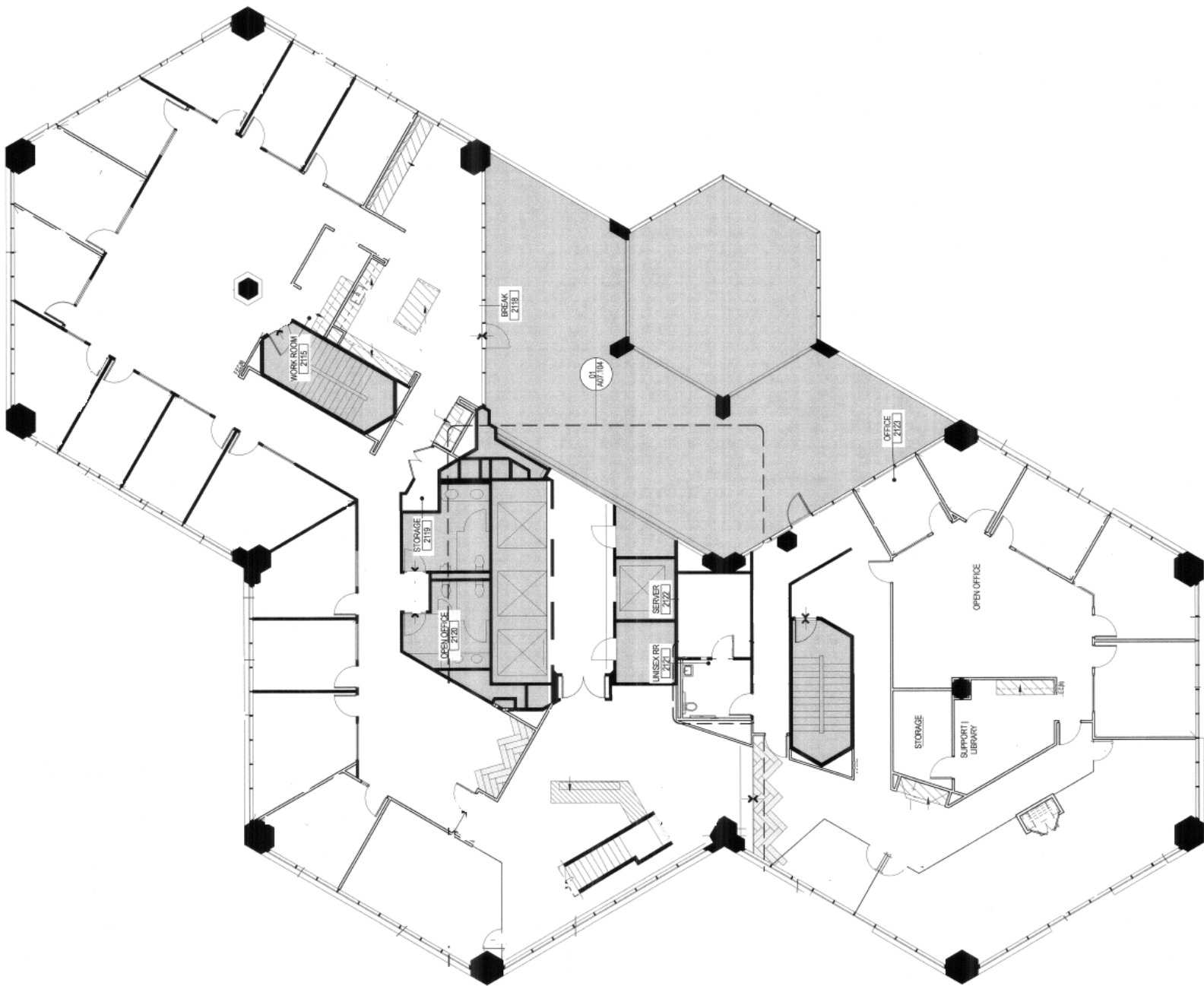
January 31st, 2028

ADDITIONAL FEATURES

- Unique upper suites on the 21st and 22nd floor in the coveted Emerald Plaza
- Private elevator lobby with a generous reception space
- Panoramic 360-degree views of San Diego Bay and Downtown
- Highly functional, professional, plug & play office build-out
- Luxury finishes with abundant natural light

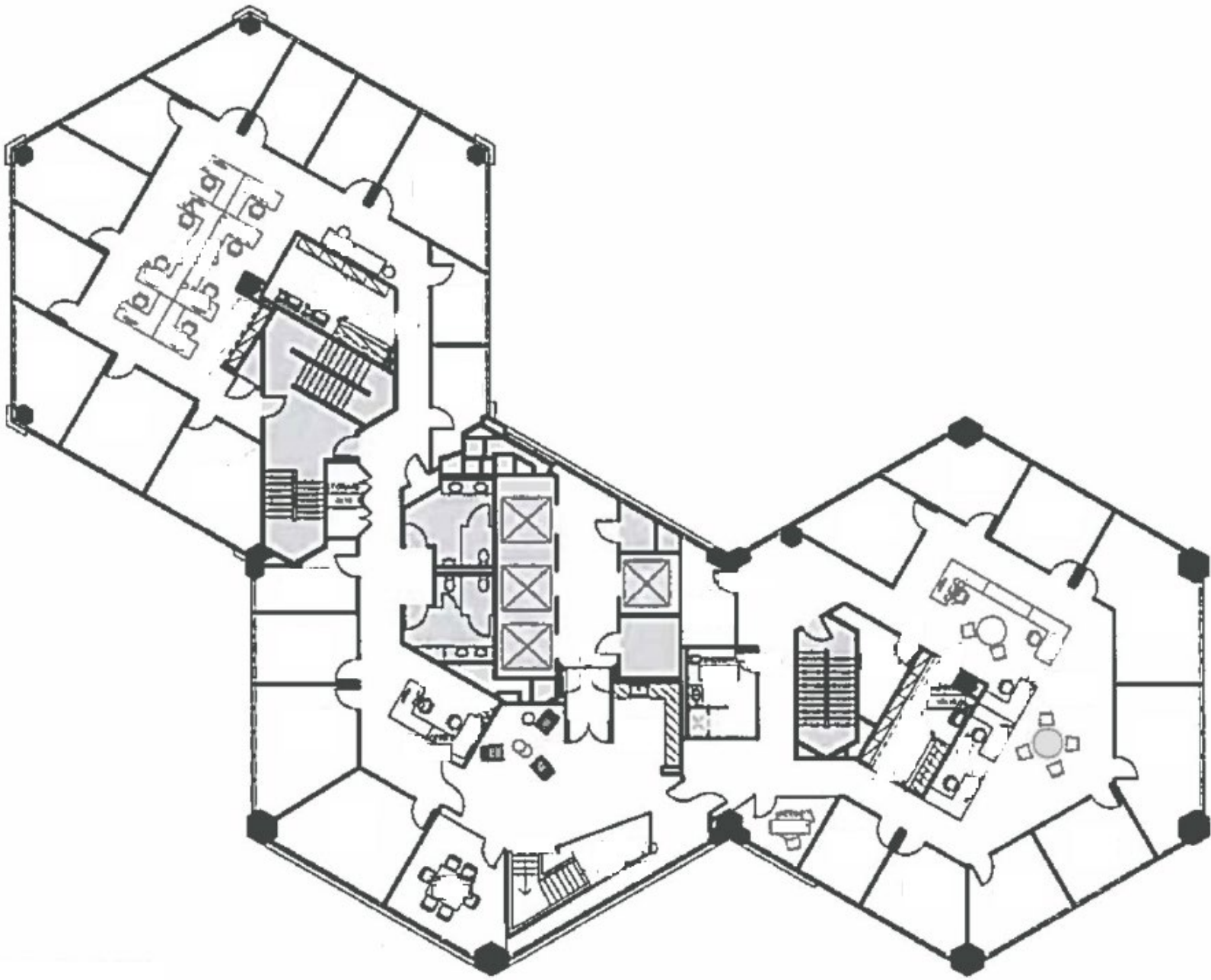
FLOOR PLAN

21st Floor - 11,221 SF



FLOOR PLAN

22nd Floor - 10,957 SF



402 WEST BROADWAY, SUITE 2100 & 2200



402 WEST BROADWAY, SUITE 2100 & 2200



402 WEST BROADWAY, SUITE 2100 & 2200



402 WEST BROADWAY, SUITE 2100 & 2200



402 WEST BROADWAY, SUITE 2100 & 2200

