

# 401 B Street **SUITE 2340**

San Diego, CA 92101



OFFICE SUBLEASE | AVAILABLE IMMEDIATELY

**1,972 RSF**

**STAR HUGHES-GORUP** | Senior Vice President & Director  
619.238.2111 | [hughesmarino.com](mailto:hughesmarino.com)

**HUGHESMARINO**

# BUILDING INFORMATION

**BUILDING**

Wells Fargo Plaza

**ADDRESS**

401 B Street, Suite 2340,  
San Diego, CA 92101

**AVAILABLE**

Immediately

**ASKING RATE**

\$1.75 per RSF

**AVAILABLE THROUGH**

10/31/2024

**ADDITIONAL FEATURES**

- Beautiful Class A high-rise space with city, ocean, and Balboa Park views
- 5 window offices, 3 interior offices, reception area, and kitchen with seating area
- Hardwood floors and glass offices throughout
- Available on a long-term, direct basis too!

# LOCATION HIGHLIGHTS



TRANSIT  
SCORE

83

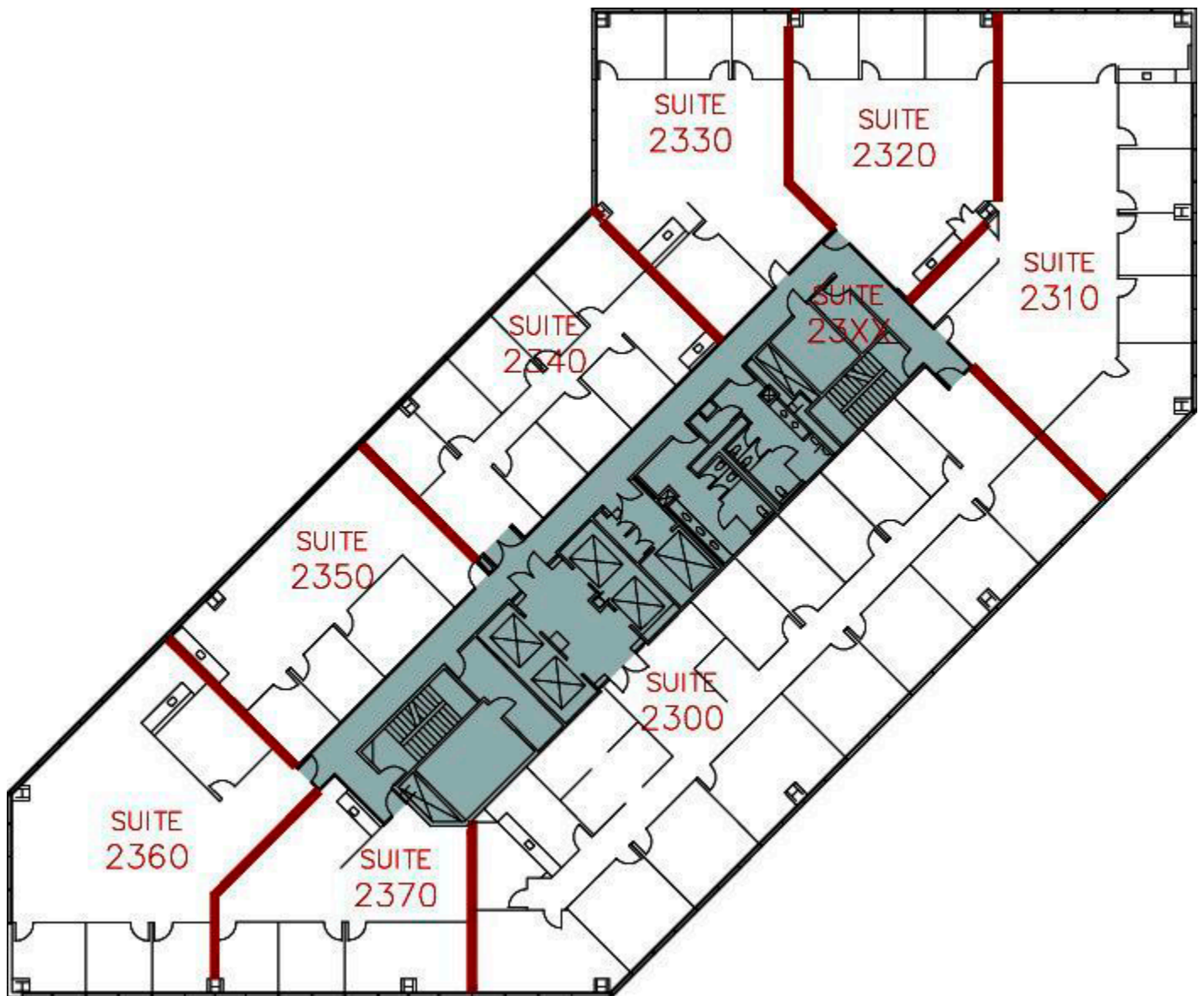
WALK  
SCORE

100

## KEY HIGHLIGHTS

- Excellent I-5 and CA-163 access and visibility
- Abundant Retail, Restaurant & Health Club Amenities

# FLOOR PLAN





401 B STREET, SUITE 2340

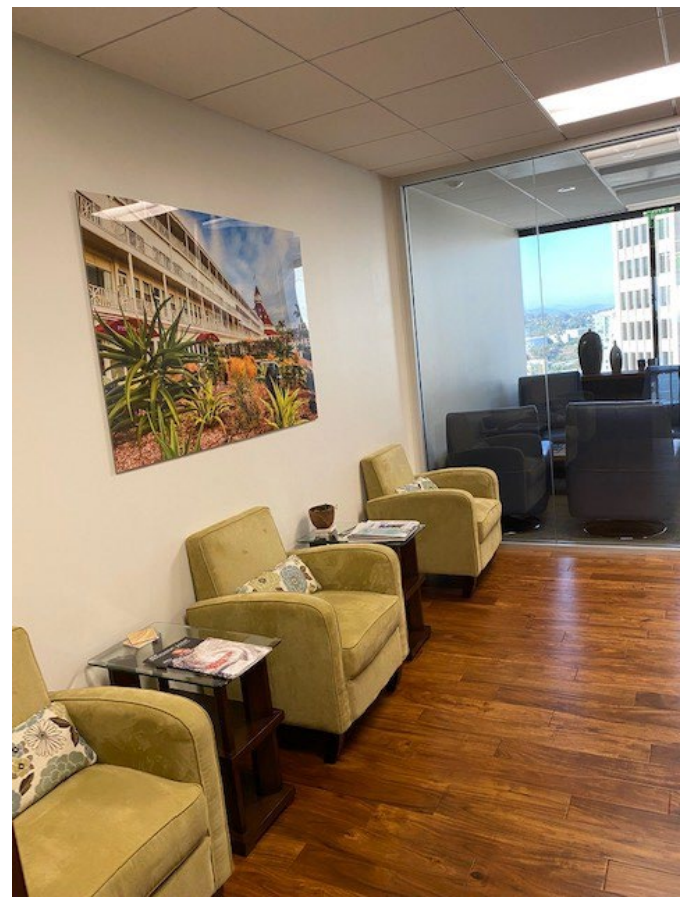


**STAR HUGHES-GORUP** | Senior Vice President & Director  
619.238.2111 | [hughesteam@hugesmarino.com](mailto:hughesteam@hugesmarino.com)

**HUGHESMARINO**



401 B STREET, SUITE 2340



**STAR HUGHES-GORUP** | Senior Vice President & Director  
619.238.2111 | [hughesmarino.com](mailto:hughesmarino.com)

**HUGHESMARINO**

# CONTACT INFORMATION



**STAR HUGHES-GORUP**  
hughesmarino.com  
619.238.2111  
Broker Lic. #01907998

**1450 FRONT STREET, SAN DIEGO, CA 92101**  
619.238.2111 | hughesmarino.com

**HUGHESMARINO**