

# 225 BROADWAY SUITE 2100

San Diego, CA 92101



OFFICE SUBLEASE | AVAILABLE IMMEDIATELY

**200-750 RSF**

HUGHESMARINO

# BUILDING INFORMATION



## ADDRESS

225 Broadway,  
Suite 2100,  
San Diego, CA 92101

## AVAILABLE

Immediately

## ASKING RATE

\$1,250-\$1,300 per office;  
\$450 per secretary bay

## TERM

Flexible

## ADDITIONAL FEATURES

- Three offices and two secretary bays available for sublease in a law firm suite at 225 Broadway!
- Office 1 is a larger office available for \$1,300/month starting May 15<sup>th</sup>, 2024; Offices 2 & 3 are both mid-size offices available immediately for \$1,250/month/office.
- Office furniture available for purchase from the prior tenant in Office 2, please inquire if interested.
- Phone answering, kitchen use and conference rooms also available.

# LOCATION HIGHLIGHTS



TRANSIT  
SCORE

82

WALK  
SCORE

99

## KEY HIGHLIGHTS

- Excellent I-5 and CA-163 access
- Abundant Retail, Restaurant & Health Club Amenities
- Walking distance to the waterfront, Little Italy and Gaslamp neighborhoods

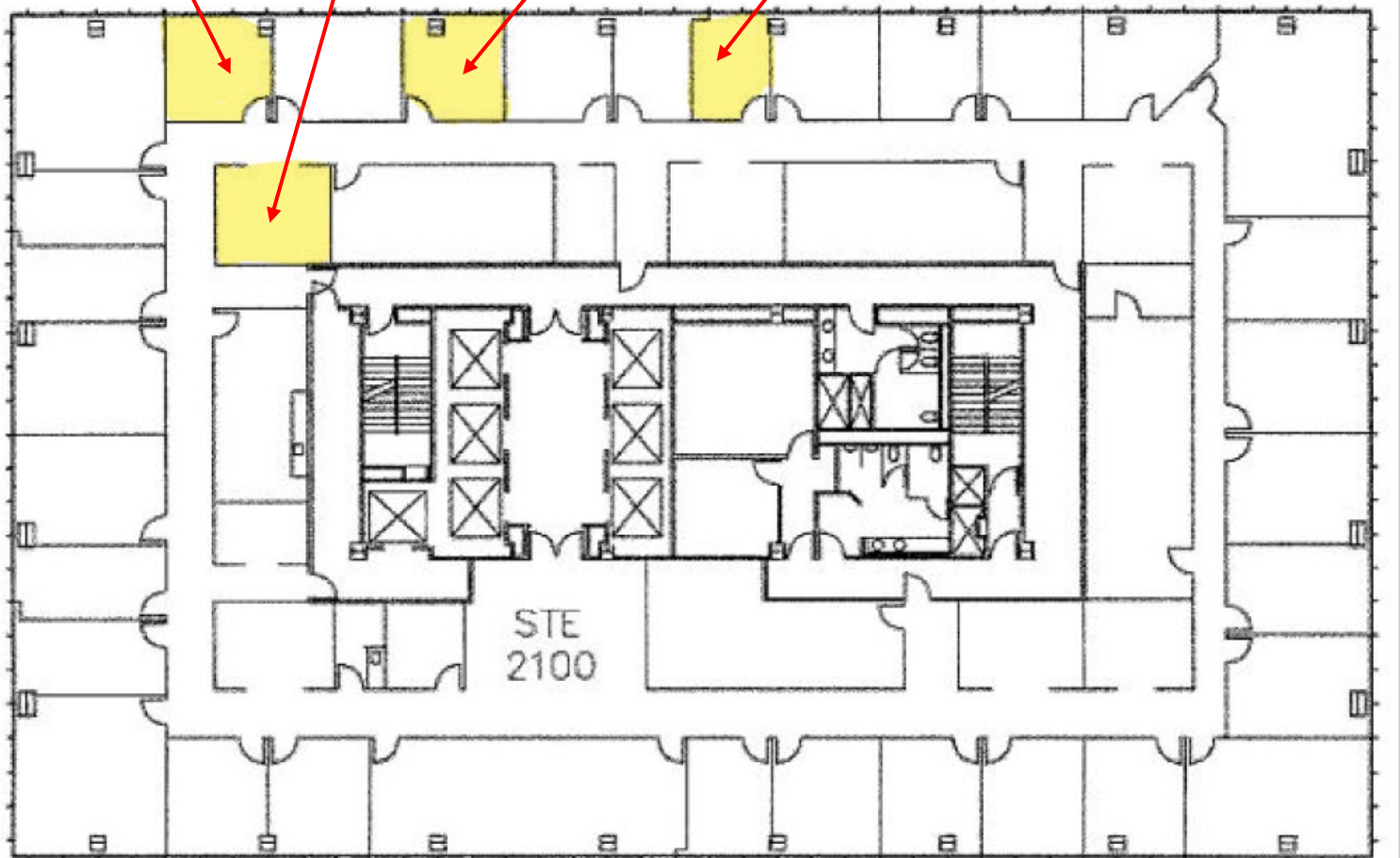
# FLOOR PLAN

OFFICE 1  
Available  
5/15/2024

SECRETARY  
BAYS

OFFICE 2

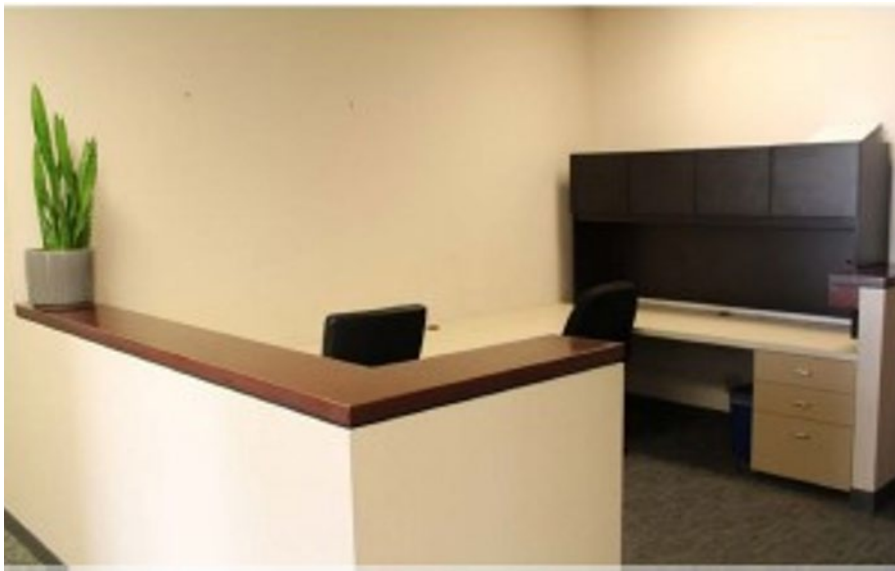
OFFICE 3



225 BROADWAY, SUITE 2100



225 BROADWAY, SUITE 2100



225 BROADWAY, SUITE 2100



**STAR HUGHES-GORUP** | Executive Vice President & Director  
619.238.2111 | [hughesmarino.com](mailto:hughesmarino.com)

**HUGHESMARINO**

# CONTACT INFORMATION



**STAR HUGHES-GORUP**

[hughesteam@hughesmarino.com](mailto:hughesteam@hughesmarino.com)

619.238.2111

Broker Lic. #01907998

**1450 FRONT STREET, SAN DIEGO, CA 92101**

619.238.2111 | [hughesmarino.com](http://hughesmarino.com)

**HUGHESMARINO**