

225 BROADWAY SUITE 2050

San Diego, CA 92101



OFFICE SUBLEASE | AVAILABLE IMMEDIATELY

200-650 RSF

HUGHESMARINO

BUILDING INFORMATION



ADDRESS

225 Broadway,
Suite 2050,
San Diego, CA 92101

AVAILABLE

Immediately

ASKING RATE

\$1,000 per office;
\$500 per secretary bay

TERM

Through 12/31/2024

ADDITIONAL FEATURES

- Two offices and two secretary bays available for sublease in a law firm suite at 225 Broadway!
- Common areas including kitchen and conference room available for shared use.

LOCATION HIGHLIGHTS



TRANSIT
SCORE

82

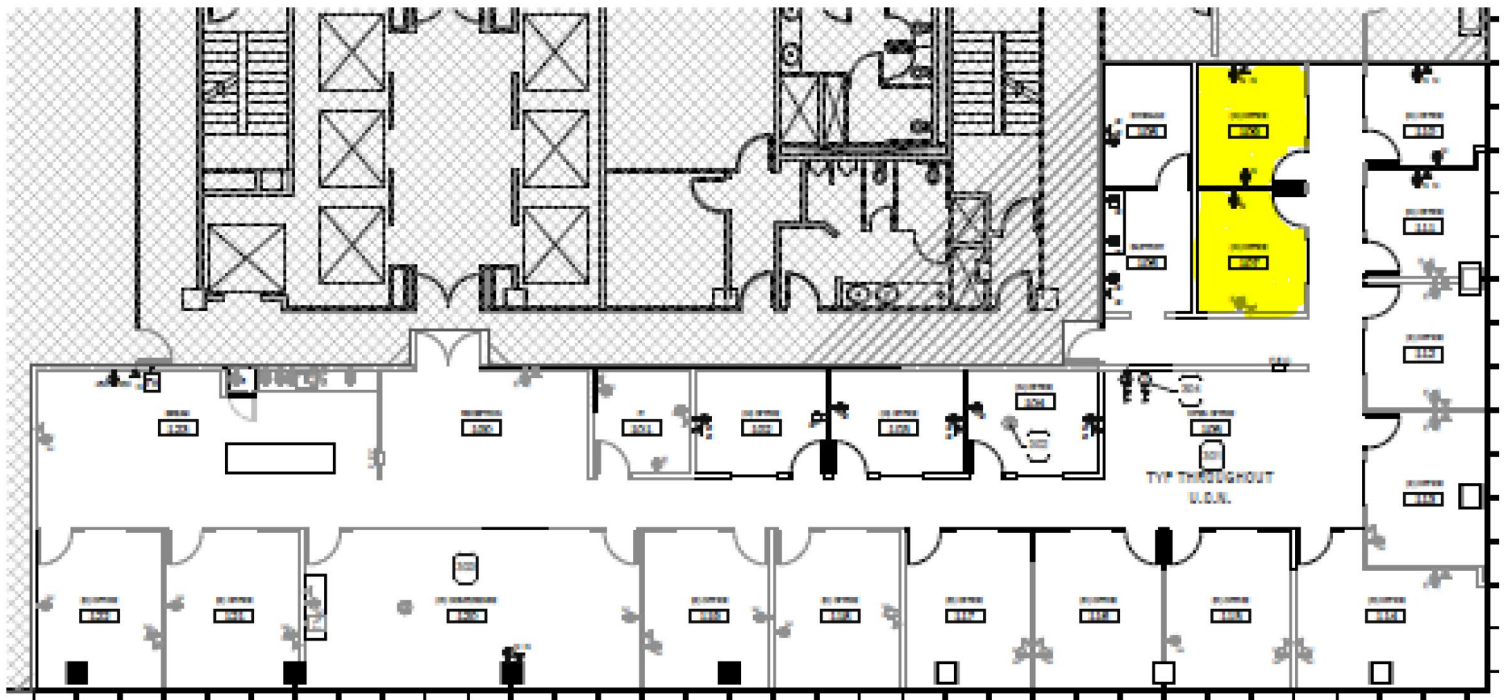
WALK
SCORE

99

KEY HIGHLIGHTS

- Excellent I-5 and CA-163 access
- Abundant Retail, Restaurant & Health Club Amenities
- Walking distance to the waterfront, Little Italy and Gaslamp neighborhoods

FLOOR PLAN



225 BROADWAY, SUITE 2050



225 BROADWAY, SUITE 2050



CONTACT INFORMATION



STAR HUGHES-GORUP

hughes@hughesmarino.com

619.238.2111

Broker Lic. #01907998

1450 FRONT STREET, SAN DIEGO, CA 92101

619.238.2111 | hughesmarino.com

HUGHESMARINO