

225 Broadway SUITE 140

San Diego, CA 92101



OFFICE SUBLEASE | AVAILABLE IMMEDIATELY

2,651 RSF

HUGHESMARINO

BUILDING INFORMATION



ADDRESS

225 Broadway,
Suite 140,
San Diego, CA 98036

AVAILABLE

Immediately

ASKING RATE

\$2.75/SF

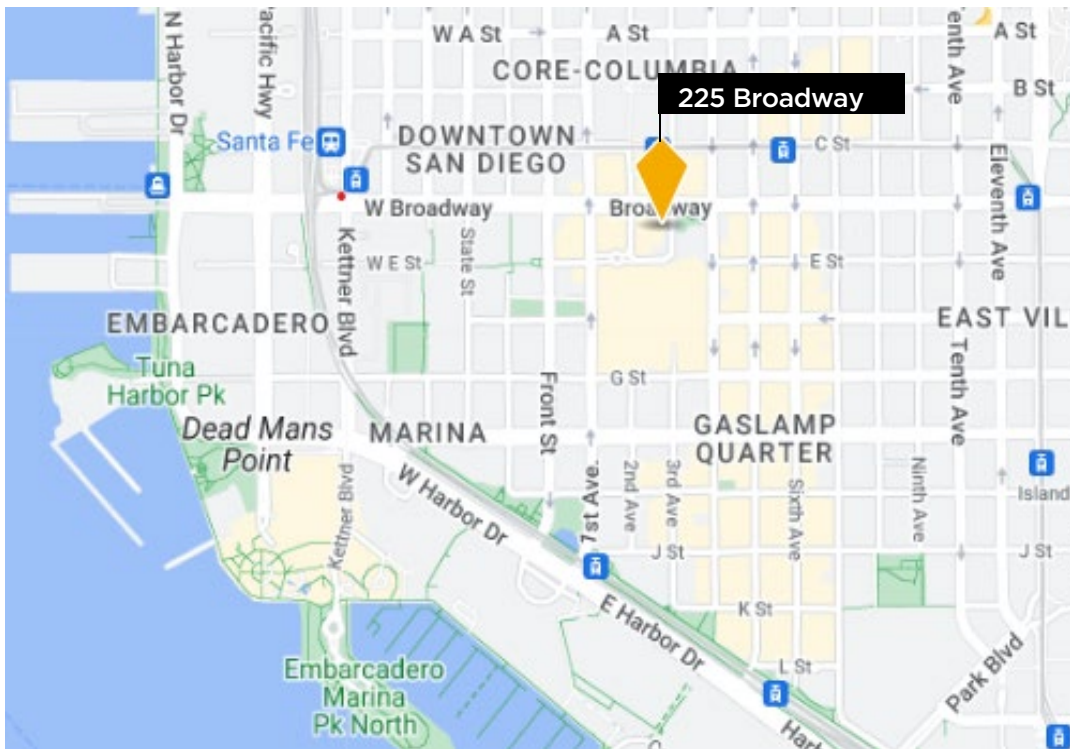
AVAILABLE THROUGH

August 31, 2025

ADDITIONAL FEATURES

- 3 private offices & conference room
- Open office/showroom area
- "Plug and Play" - available furnished and cabled!

LOCATION HIGHLIGHTS



**TRANSIT
SCORE**

82

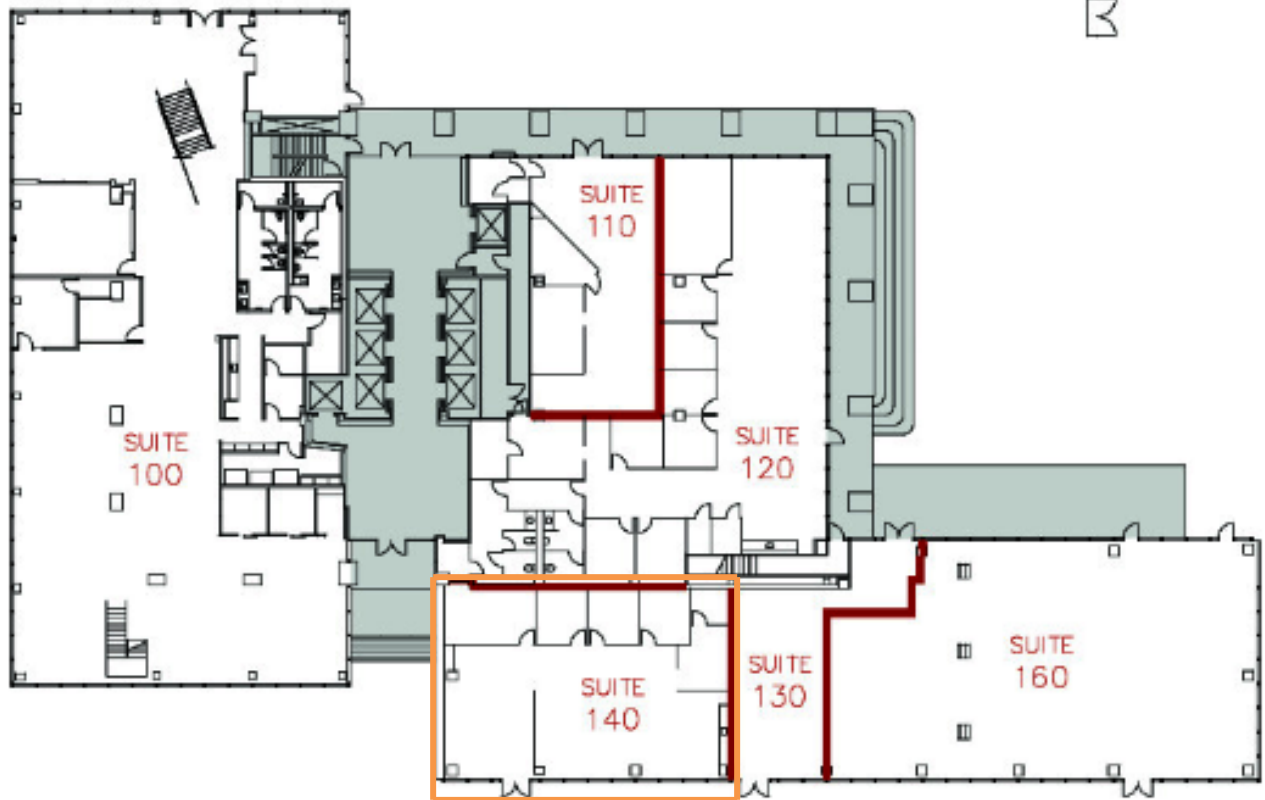
**WALK
SCORE**

99

KEY HIGHLIGHTS

- Abundant Retail, Restaurant & Health Club Amenities
- Excellent I-5 and CA-163 access
- Walking distance to the waterfront, Little Italy and Gaslamp neighborhoods

FLOOR PLAN



CONTACT INFORMATION



STAR HUGHES-GORUP

hughsteam@hughesmarino.com

619-238-2111

Broker Lic. #01907998

**1450 Front Street
San Diego, CA 92101**

619-238-2111 | hughesmarino.com

HUGHESMARINO