



6800 KOLL CENTER PARKWAY SUITE 160

Plug & Play Sublease | 5,642 RSF

HUGHESMARINO

6800 Koll Center Parkway, Suite 160, Pleasanton | 5,642 RSF



Building Information

Address: 6800 Koll Center Parkway, Suite 160, Pleasanton, CA 94566

Available: 5,642 Rentable Square Feet

Asking Rate: \$1.95 PSF/Month, FSG

Available: Immediately

Term Through: February 28, 2022

Description

Class A, plug & play, office sublease. 8 private offices/huddle rooms, 3 large conference rooms, central open seating area (can seat 12+), designated waiting area and break room. Plenty of natural light, furniture can be made available. 1st floor space (elevator not needed for access) and free/surface parking lot with abundant parking. Building amenities include childcare facility, fitness center, covered outdoor seating area, walking trails and putting green.

Please Contact:

Kam Schroeder

Senior Vice President

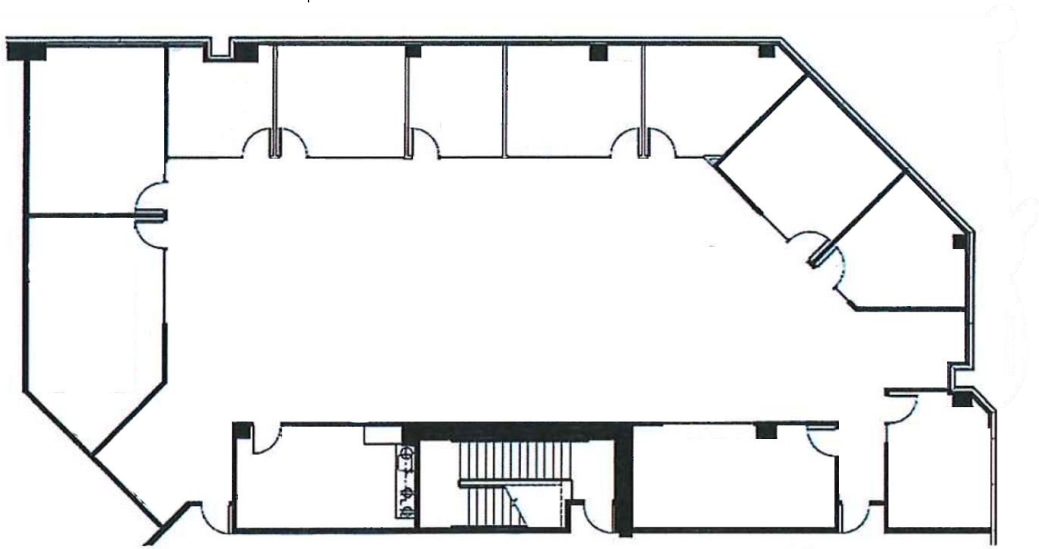
kam@hughesmarino.com

(925) 239-1222

License #01722302



Suite 160 | 5,642 RSF



6800 Koll Center Parkway, Suite 160, Pleasanton | Floor Plan

