

# 630 PLAZA DRIVE SUITE 150

HIGHLANDS RANCH, CO 80129



OFFICE SUBLEASE | AVAILABLE WITHIN 30 DAYS

16,080 RSF

HUGHESMARINO

# BUILDING INFORMATION



## **BUILDING**

Highlands Ranch Business Park

## **ADDRESS**

630 Plaza Drive, Suite 150  
Highlands Ranch, CO 80129

## **AVAILABLE**

Within 30 Days

## **ASKING RATE**

\$20.00/FSG

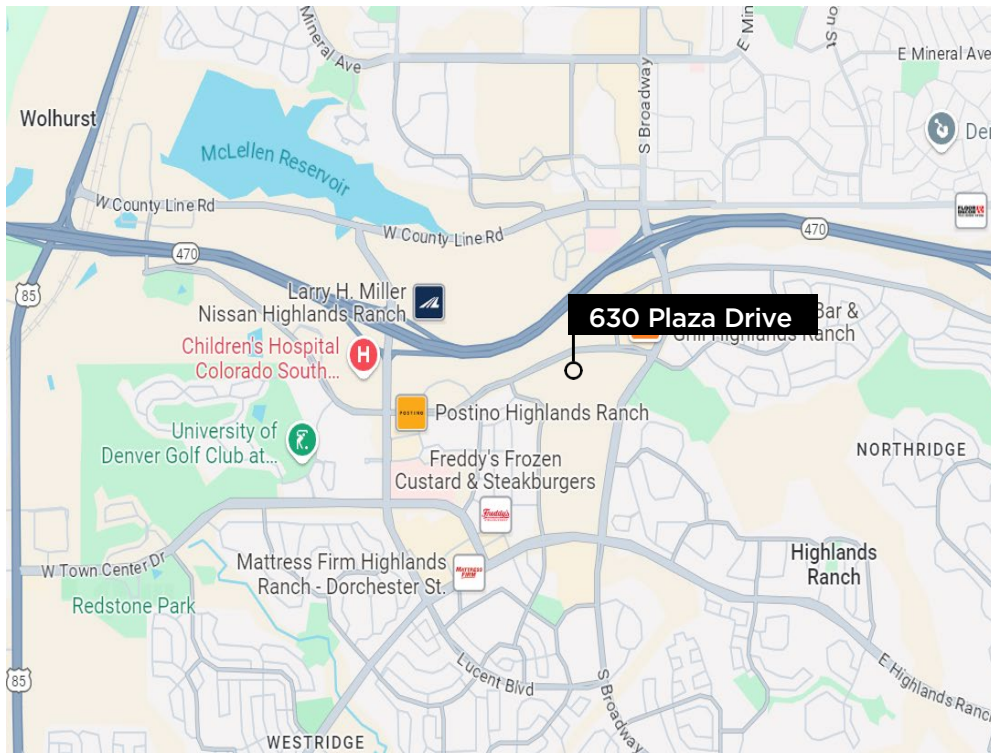
## **AVAILABLE THROUGH**

March 31, 2026

## **ADDITIONAL FEATURES**

- Plug and Play
- Updated Fitness Center with Showers and Lockers
- Common Conference Room for Tenant Use
- Unparalleled Class A Finishes Throughout

# LOCATION HIGHLIGHTS



**FREWAY  
ACCESS**



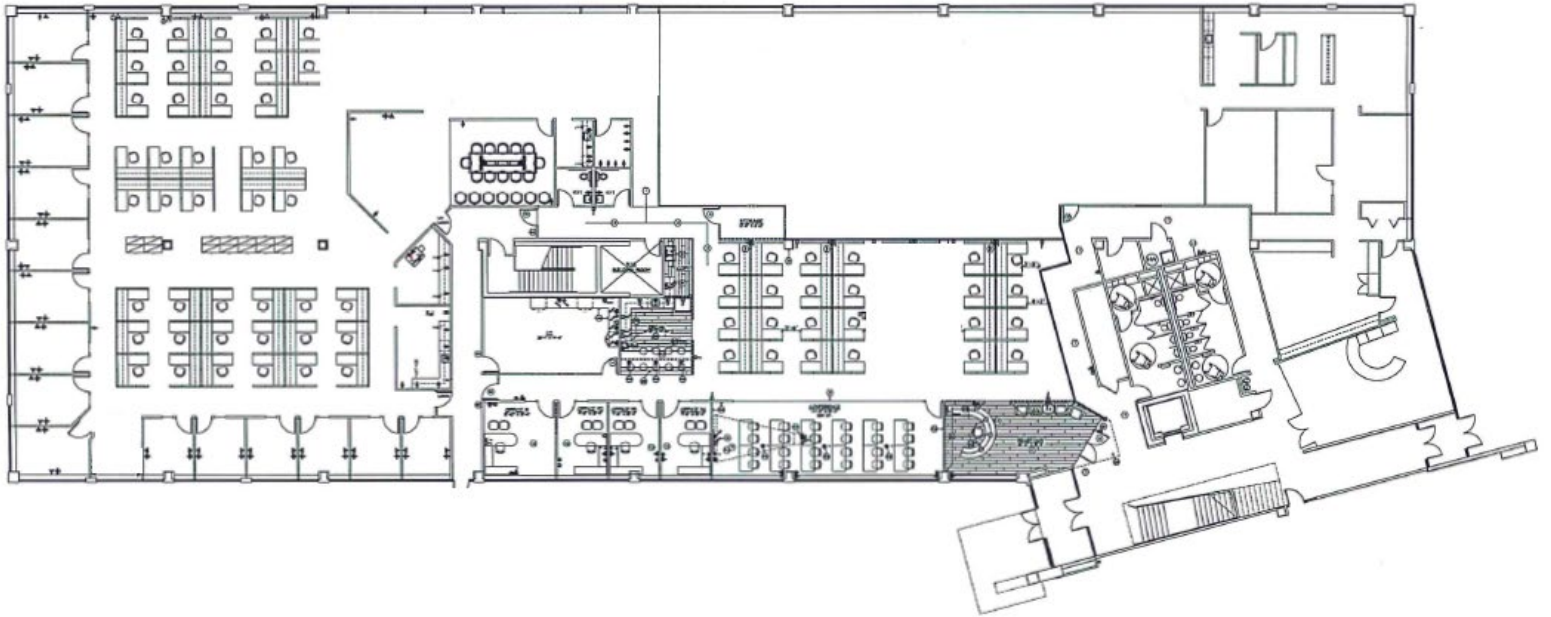
**RETAIL &  
RESTAURANTS**



## KEY HIGHLIGHTS

- Ample Parking with EV Charging
- Easy Access to 470 / Lucent Boulevard Interchange
- Walking Distance to Coffee, Restaurants, Hotels and Fitness Concepts
  - Postino, Starbucks, Torchy's Tacos, Snarf's Sandwiches, Prost Brewing Company and more

# FLOOR PLAN



## SPACE HIGHLIGHTS

- 86 Workstations
- 15 Private Offices
- 3 Meeting Rooms
- Multiple Kitchen Spaces
- In-Suite Private Restrooms
- Building Signage Opportunity

630 PLAZA DRIVE, SUITE 150



630 PLAZA DRIVE, SUITE 150



# CONTACT INFORMATION



**MARC FELDMAN**  
[marc@hughesmarino.com](mailto:marc@hughesmarino.com)  
(303) 957-4274



**TYLER HERMAN**  
[tyler@hughesmarino.com](mailto:tyler@hughesmarino.com)  
(303) 957-4282