

1444 WAZEE STREET

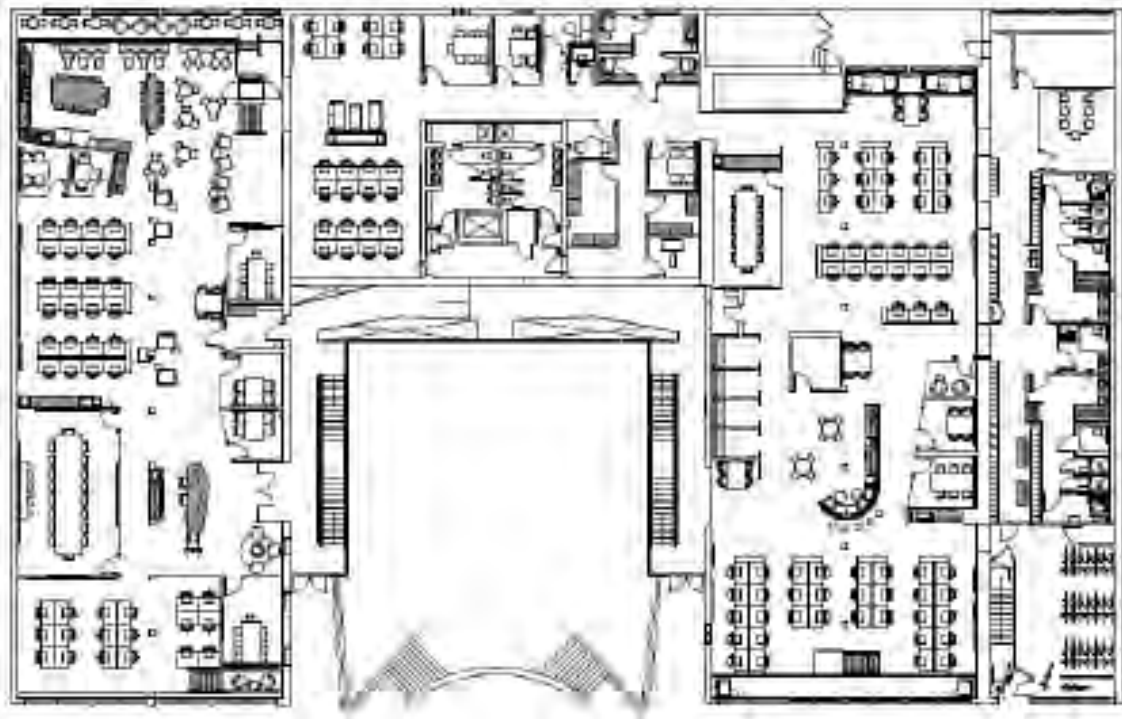
Denver, CO, 80202



OFFICE SUBLEASE | AVAILABLE IMMEDIATELY

19,814 RSF

BUILDING & SPACE INFORMATION



BUILDING

Elephant Corral

ADDRESS

1444 Wazee St.

Second Floor

Denver, CO 80202

AVAILABLE

Immediately

ASKING RATE

Negotiable

AVAILABLE THROUGH

Negotiable

KEY HIGHLIGHTS

- Walking distance to Union Station and Larimer Square
- Located on the Cherry Creek Bike path

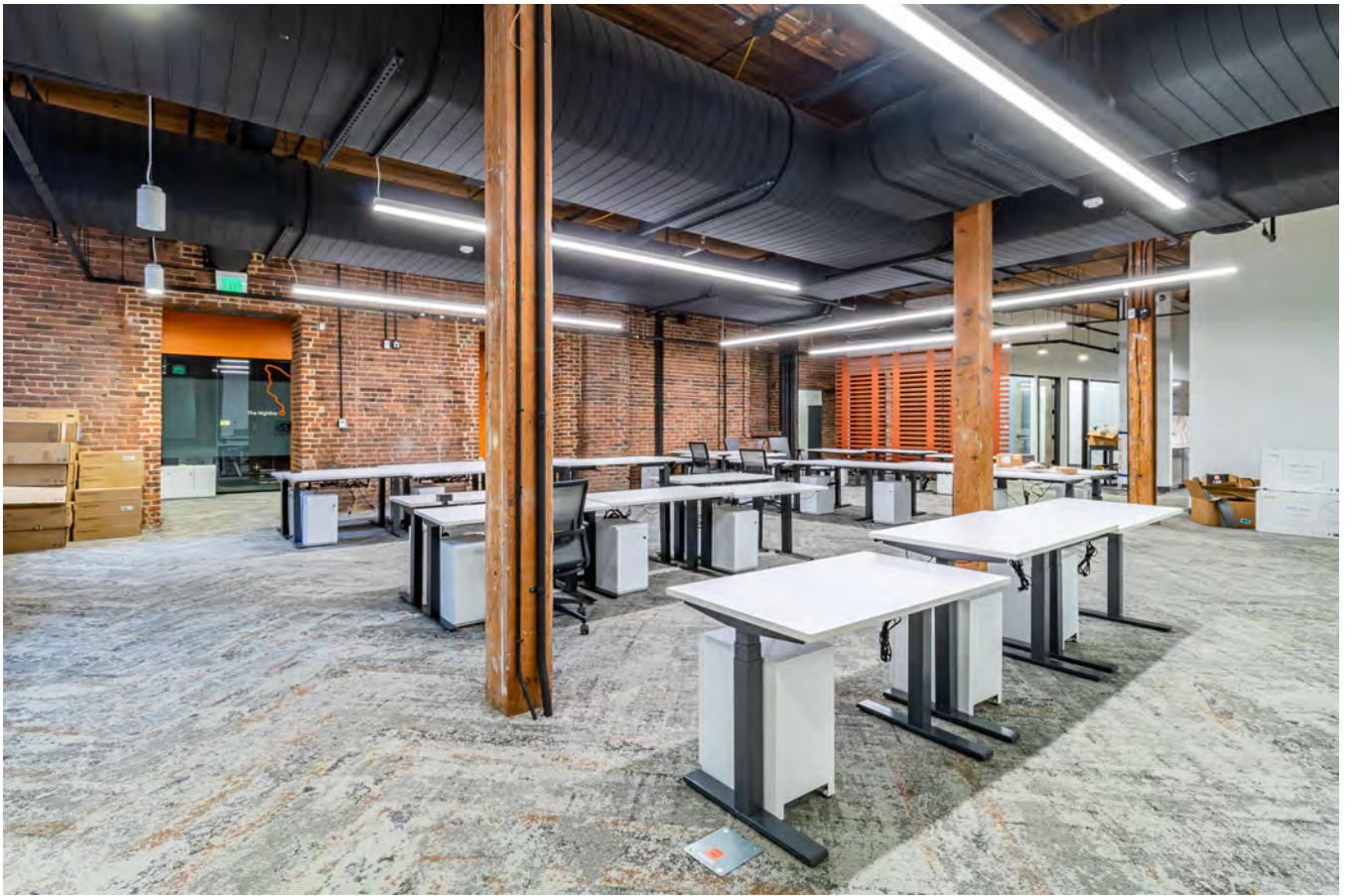
ADDITIONAL FEATURES

- Historic brick and timber
- Located in the heart of LoDo
- High ceilings
- Large windows and abundant natural light

1444 WAZEE STREET



1444 WAZEE STREET



Lindsay Brown | Executive Vice President
303.529.2111 | Lindsay@hughesmarino.com

Anna Quattlebaum | Vice President
303.957.4280 | Anna@hughesmarino.com