

15725 DALLAS PARKWAY SUITE 510

ADDISON, TX 75001



OFFICE SUBLEASE | IMMEDIATE AVAILABILITY
1,953 RSF

HUGHES MARINO

BUILDING INFORMATION



BUILDING

2 Addison Circle

ADDRESS

15725 Dallas Parkway,
Suite 510,
Addison, TX 75001

AVAILABLE

IMMEDIATELY

ASKING RATE

\$22.00/RSF NNN (\$11.81/RSF)

AVAILABLE THROUGH

6/30/2028

ADDITIONAL FEATURES

- **Plug and Play**
- Fitness Center and Postal Center on site
- Immediate access to DART Park & Ride
- **Within Walking distance from:**
 - Thirty (30) retail and support services
 - Eleven (11) restaurants
 - 2,400 Residential apartments and townhouses
 - Addison convention center

LOCATION HIGHLIGHTS



TOLLWAY ACCESS



RETAIL & RESTAURANTS



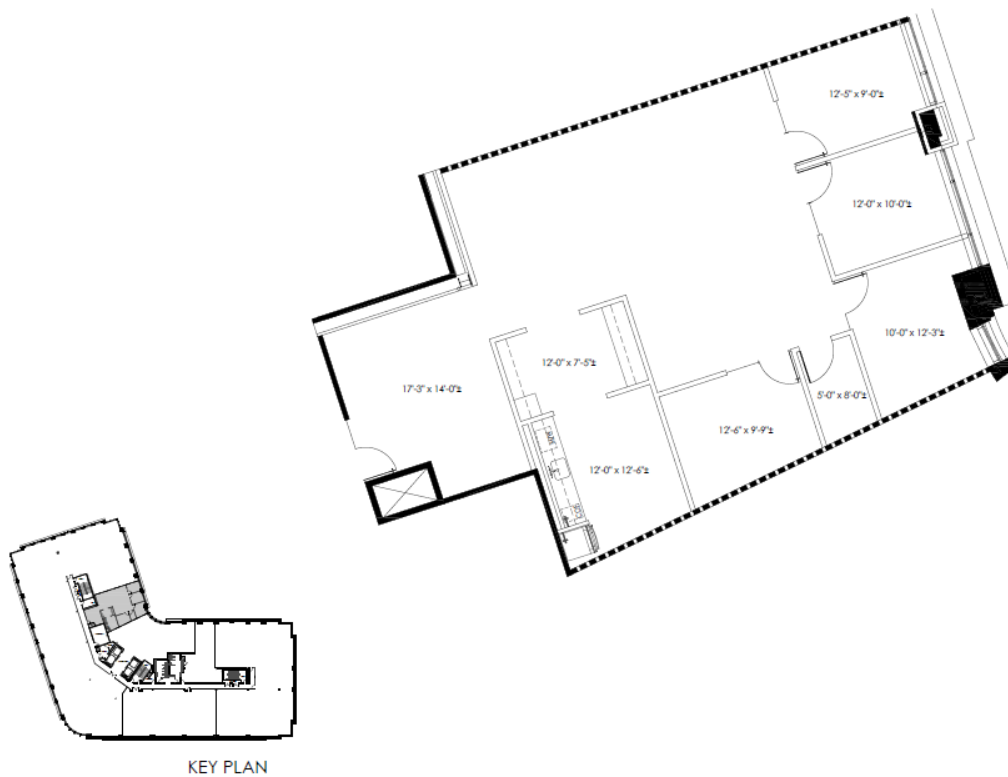
HEALTH CLUB



KEY HIGHLIGHTS

- Excellent I-635 and North Dallas Parkway access and visibility
- Abundant Retail, Restaurant & Health Club Amenities
- Less than 20 Minutes from Downtown Dallas and DFW Airport
- Less than 15 Minutes from Dallas Love Field Airport

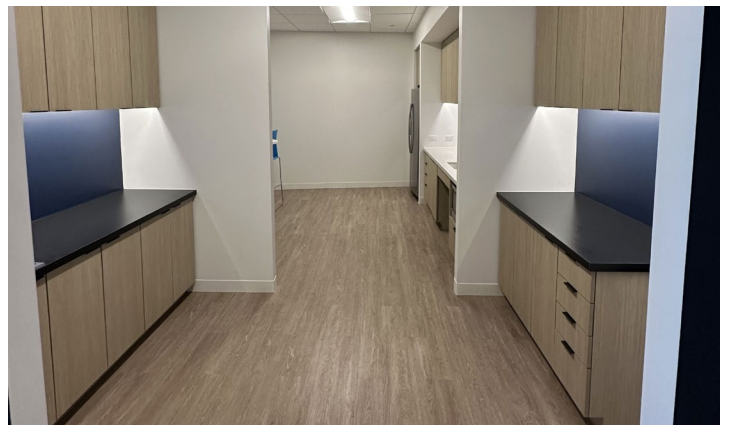
FLOOR PLAN



SPACE HIGHLIGHTS

- Plug and Play
- 4 Private Offices
- Reception/Corporate Entrance
- Breakroom/Kitchenette
- Storage Closet

15725 NORTH DALLAS PARKWAY, SUITE 510



CONTACT INFORMATION



ASHLEY WANG
ashley@hughesmarino.com
(972) 632-7565
License #785313



ART GREEN
art@hughesmarino.com
(214) 676-7187
License #302769