



# 925 B STREET SUITE 604

Office Sublease | 2,200 RSF

## Building Information

**Address:** 925 B Street, Suite 640, San Diego, CA 92101

**Available:** 2,200 Rentable Square Feet

**Asking Rate:** \$1.82 + Electricity & Janitorial

**Available Through:** April 30, 2018

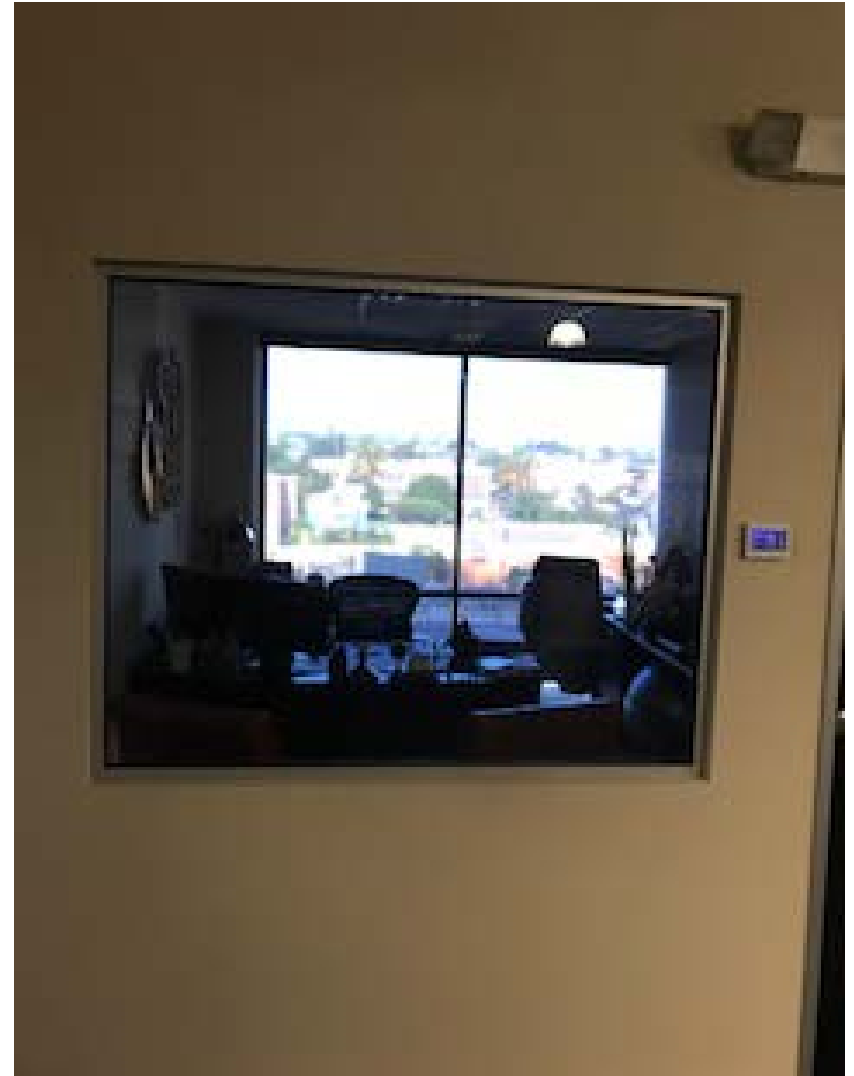
## Highlights

- Full office suite available consisting of up to 6 private offices, large conference room and small kitchenette
- Large open area is perfect for cubes or workstations
- Space is available partially furnished or empty
- Prime location on B Street, easy access to all freeways
- 4 parking spaces available



925 B Street, Suite 604, San Diego | 2,200 RSF

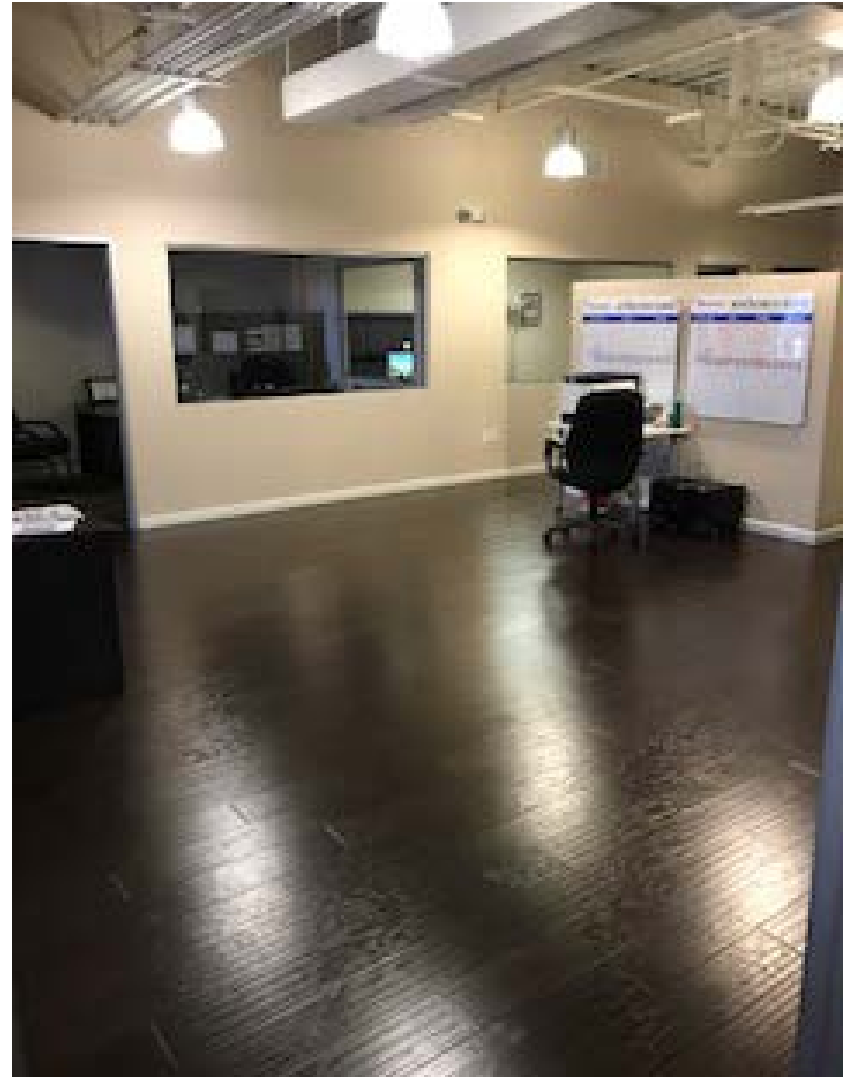
---





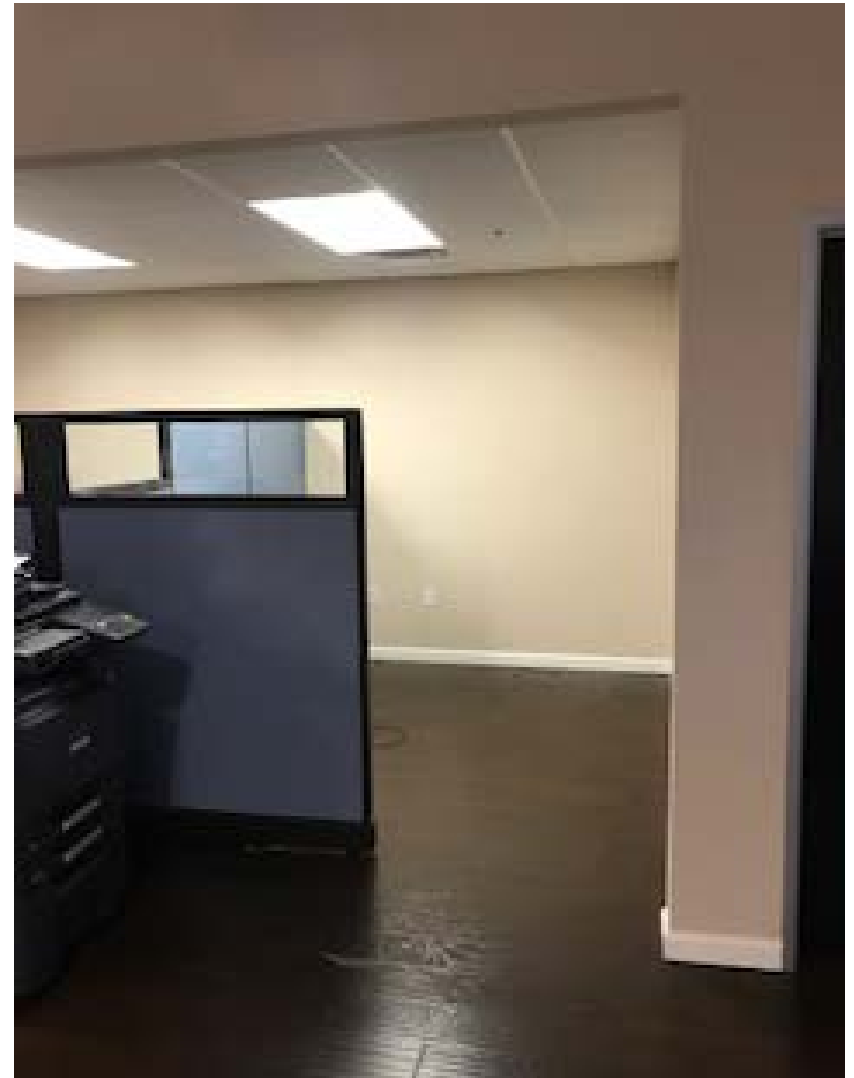
925 B Street, Suite 604, San Diego | 2,200 RSF

---

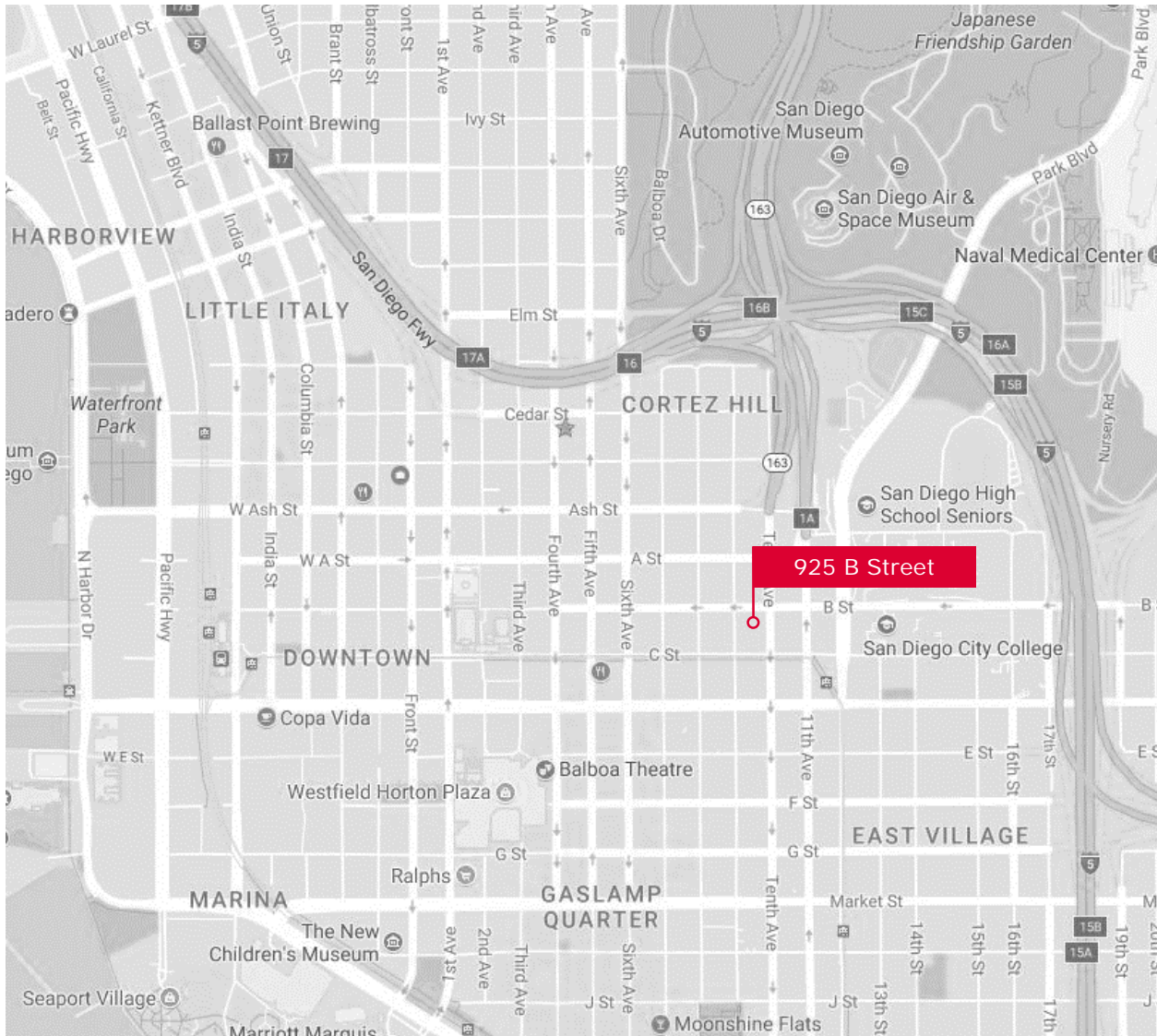


925 B Street, Suite 604, San Diego | 2,200 RSF

---



925 B Street, Suite 604, San Diego | 2,200 RSF





## For More Information, Please Contact:



### **Star Hughes-Gorup**

Senior Vice President & Director

[star@hughesmarino.com](mailto:star@hughesmarino.com)

(619) 238-2111

Broker License #01907998