

OFFICE SUBLEASE

SYMPHONY TOWERS

2,633 Square Feet

750 B Street
Suite 2880
San Diego, CA 92101

FOR LEASING INFORMATION, PLEASE CONTACT:

Star Hughes-Gorup

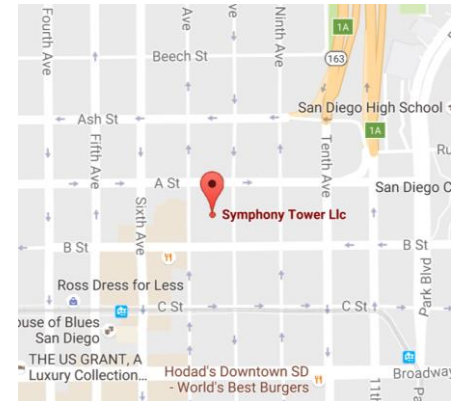
Tel: 619-238-2111
star@hughesmarino.com

Hughes Marino
Because Where You Do Business Matters™



FEATURES

- Full suite available for short term sublease!
- Office is located in desirable Class A office building in the heart of Downtown
- Three private offices, seven open offices, conference room, and kitchen
- Rent is \$5,100/month
- Available immediately
- Term through October 31, 2017



OFFICE SUBLEASE

SYMPHONY TOWERS

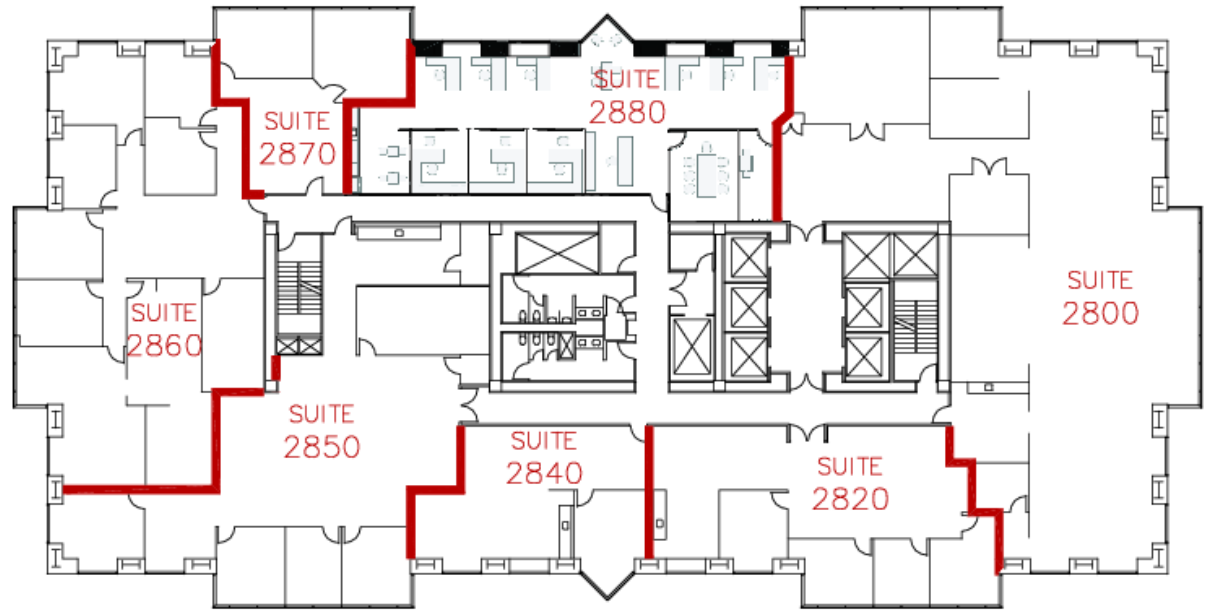
2,633 Square Feet

750 B Street
Suite 2880
San Diego, CA 92101

FOR LEASING INFORMATION, PLEASE CONTACT:

Star Hughes-Gorup

Tel: 619-238-2111
star@hughesmarino.com



Hughes Marino
Because Where You Do Business Matters™

