

600 B Street Suite 2050

Office Sublease



Building Information

Address: 600 B Street, Suite 2050, San Diego, CA 92101

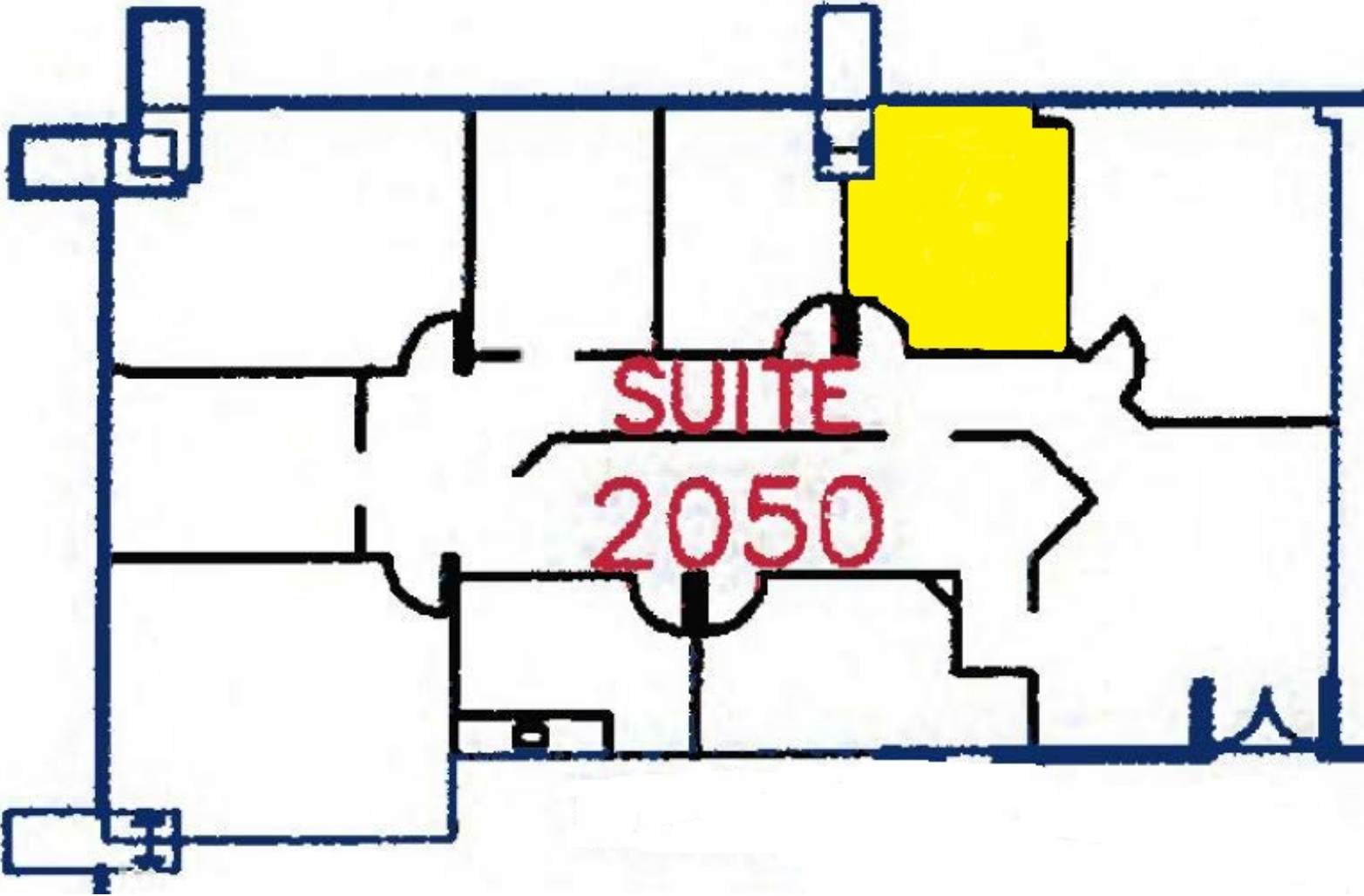
Available: One large window office

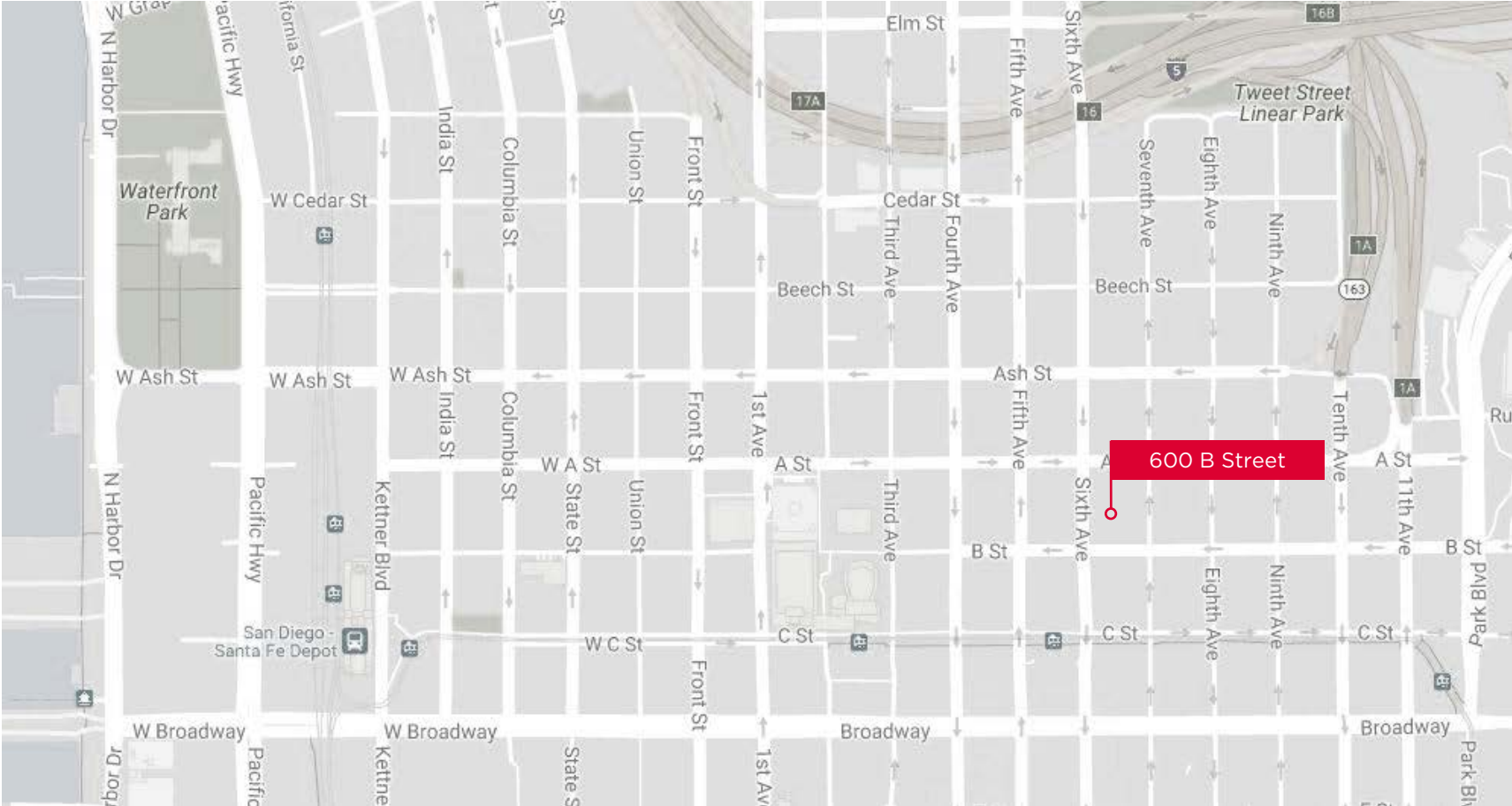
Asking Rate: \$1,100 per month

Available: Immediately

Highlights

- One large window office available in highly desired building located in the center of downtown
- Access to kitchen, conference rooms and outdoor patio
- 24/7 security
- Onsite parking
- Walking distance to restaurants and easy freeway access







For More Information, Please Contact:

Lee Tripodi
Managing Principal
Laurel Wealth Advisors

Lee@laurelwa.com
(760) 473-4109

Mark Welsh
Managing Director
Laurel Wealth Advisors

mark@laurelwa.com
(760) 807-0943