



# 402 WEST BROADWAY, SUITE 1925

Office Sublease

HUGHESMARINO



## Building Information

**Address:** 402 West Broadway, Suite 1925,  
San Diego, CA 92101

**Available:** 1 Large Partner Office

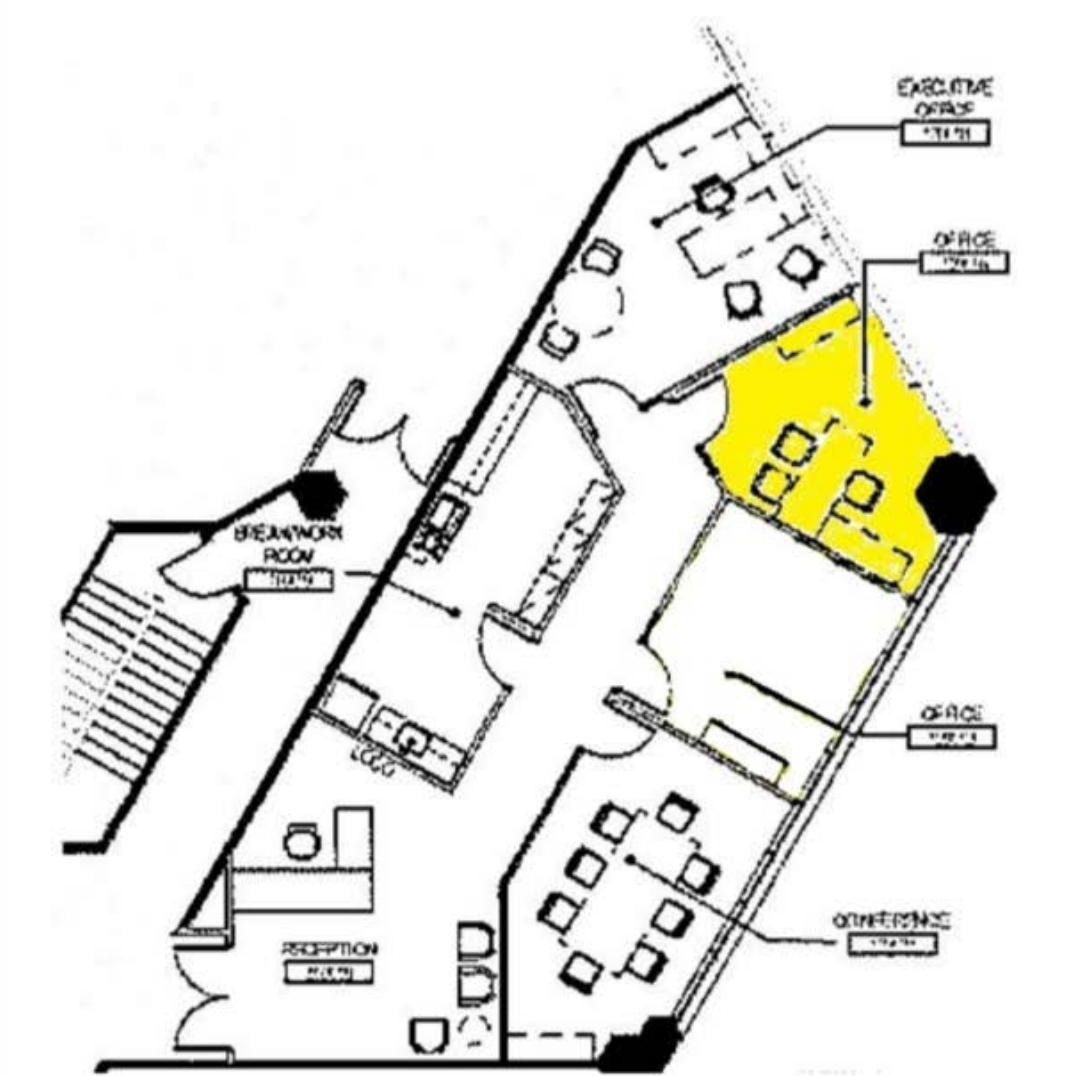
**Asking Rate:** \$1,200 per month

**Term:** Negotiable

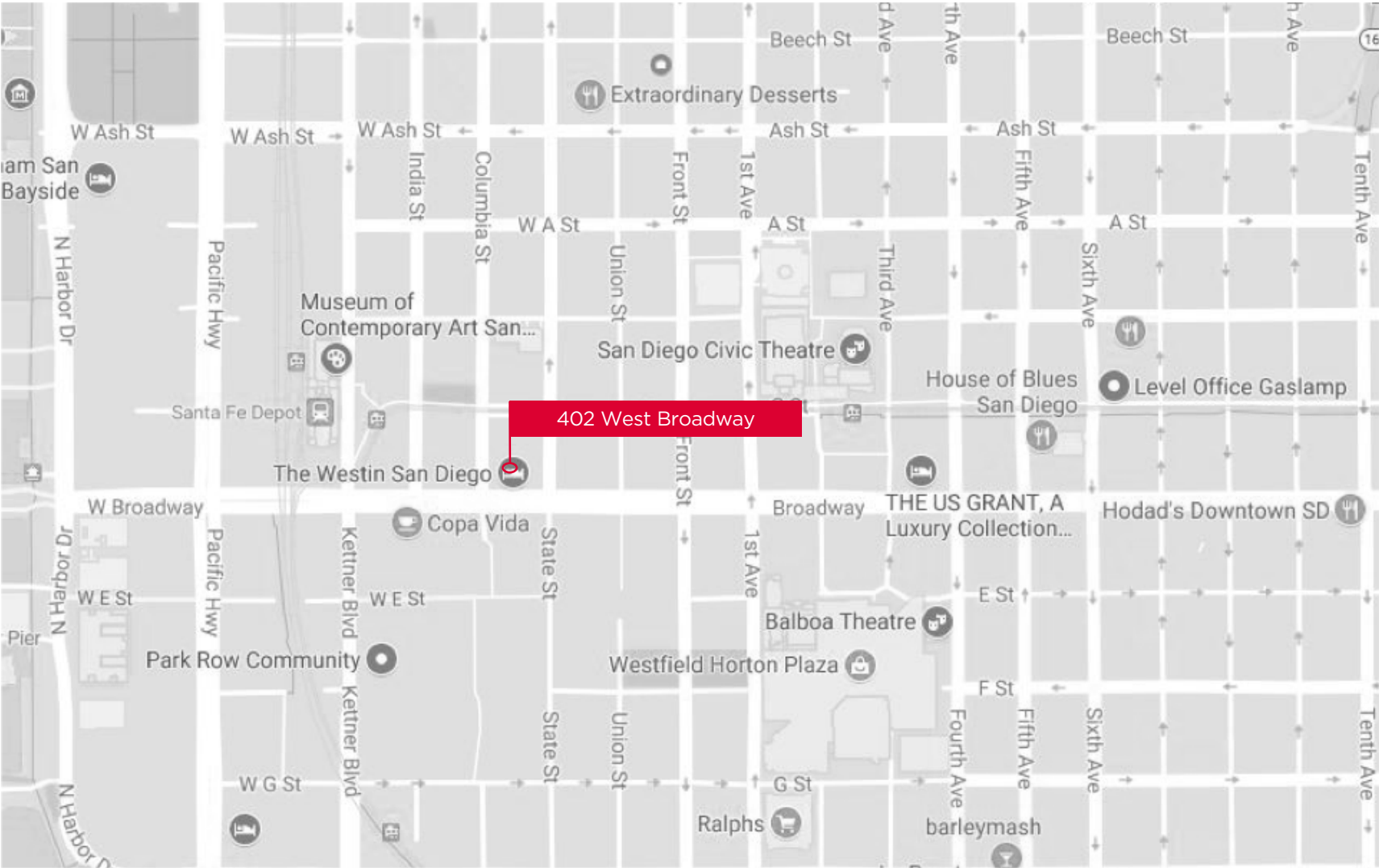
## Highlights

- Class A office building located across the street from federal and state courthouses
- One large, furnished partner office available with amazing waterfront views
- Kitchen and conference room use
- Building offers valet parking, restaurant and bar





402 West Broadway, Suite 1925, San Diego | Sublease





## For More Information, Please Contact:

**Sean Cahill**

[sean.cahill@cahilllawcorp.com](mailto:sean.cahill@cahilllawcorp.com)

(619) 419-0152