

402 WEST BROADWAY SUITE 1925

Office Sublease

HUGHESMARINO

Building Information

Address: 402 West Broadway, Suite 1925, San Diego, CA 92101

Available: 2 Large Partner Offices

Asking Rate: \$1,300/office per month

Term: Negotiable

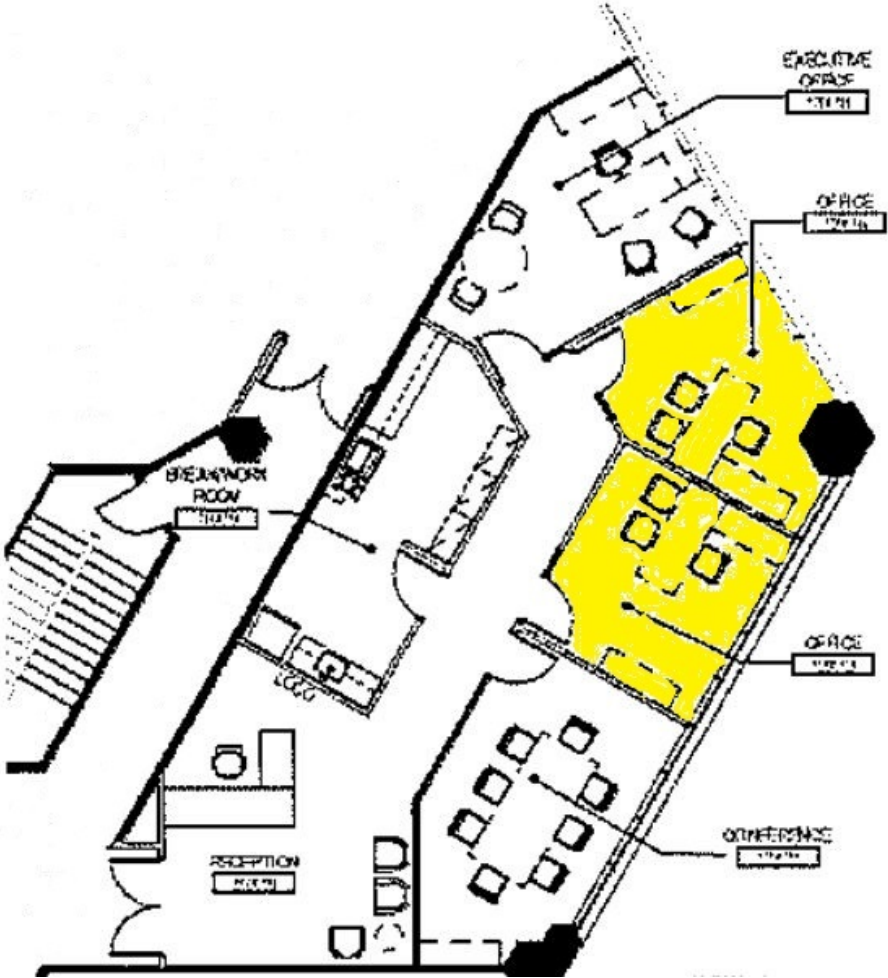
Highlights

- Class A office building located across the street from federal and state courthouses
- 2 large, furnished partner offices available with amazing waterfront views
- Kitchen and conference room use
- One parking spot available for \$200/month
- Building offers valet parking, restaurant and bar

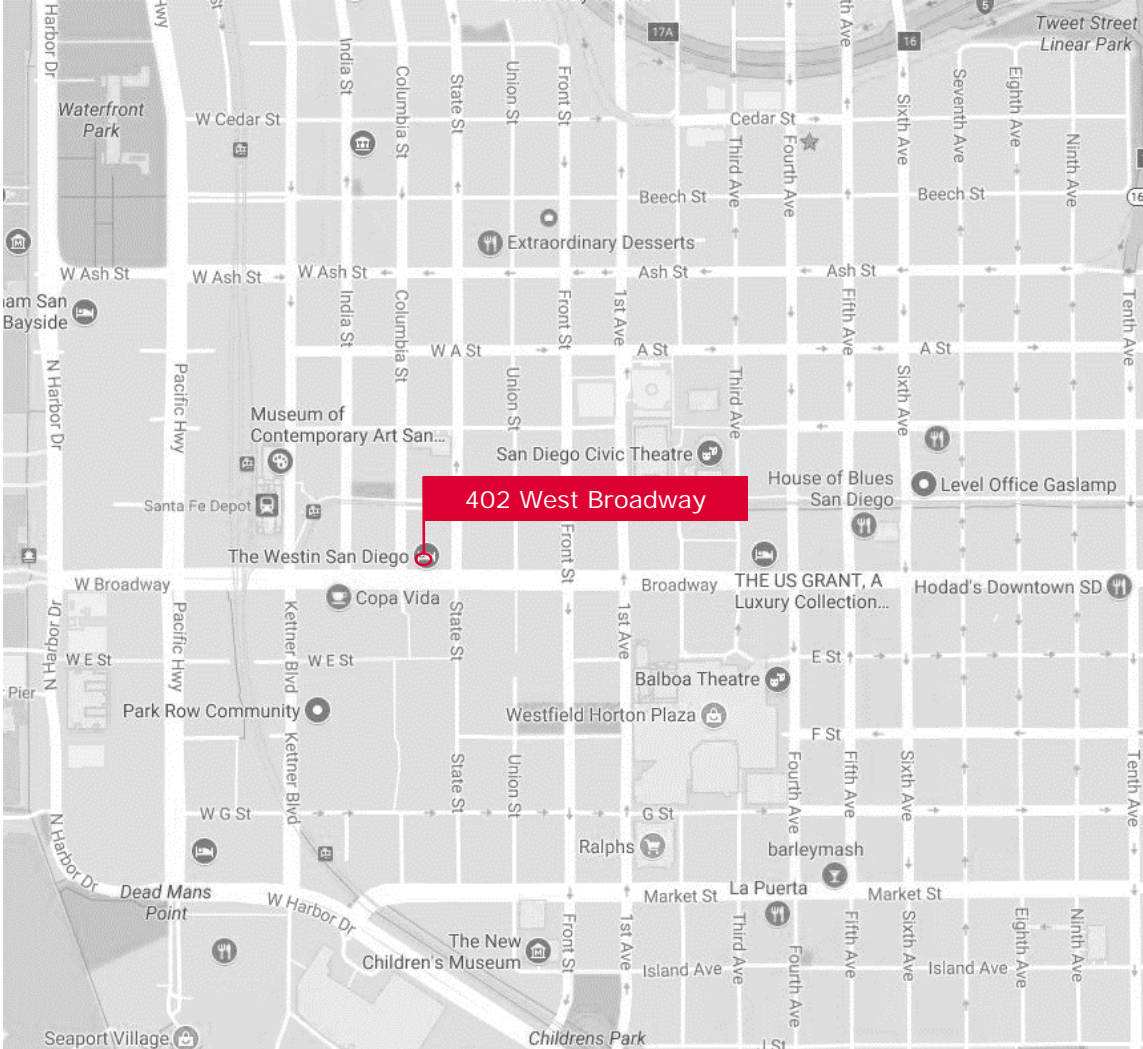


402 West Broadway, Suite 1925, San Diego | Sublease





402 West Broadway, Suite 1925, San Diego | Sublease



For More Information, Please Contact:



Star Hughes-Gorup

Senior Vice President & Director

star@hughesmarino.com

(619) 238-2111

Broker License #01907998